

Weatherford

Aledo | Hudson Oaks | Willow Park

M A G A Z I N E

OCTOBER 2014

NOW

One Dogged Youth

MiMi Farr is an accomplished
junior dog handler

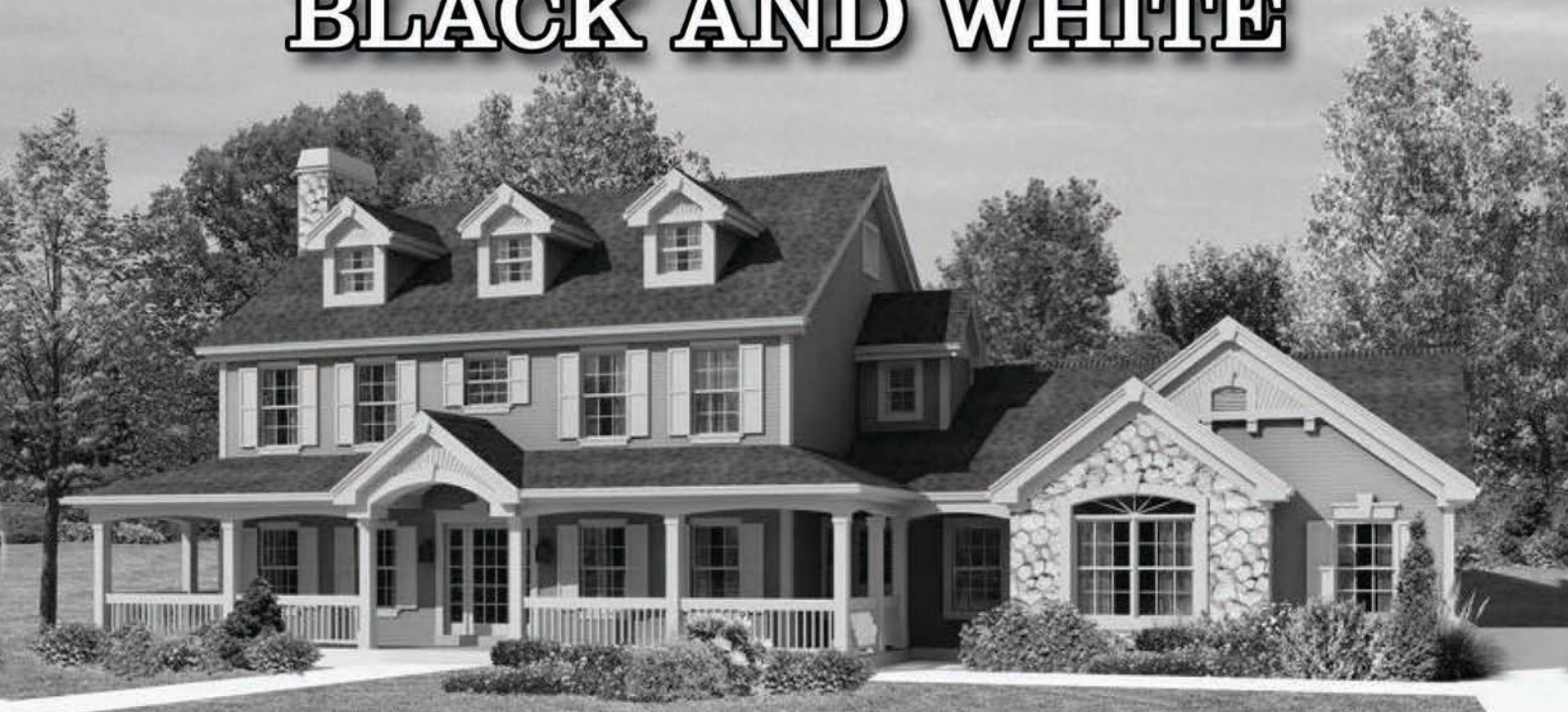
Planting Roots

At Home With
Mark and Nicki Dover

The Greatest Reward
To Prune or Not to Prune
Guns, Garden and More!

In the Kitchen
With Michelle Gibbons

**The decision of who you
allow on your roof should be
BLACK AND WHITE**



DT Roofing, LLC
WE ARE ROOFING EXPERTS

817-579-7800

dtroofing.net

LOCALLY OWNED & OPERATED

RESIDENTIAL & COMMERCIAL
Insured • Local References • Free Estimates



WHY NOT use a Realtor who...

Saves You Money?

Save Thousands! Call...

817-440-SAVE

PARKER COUNTY'S BEST REAL ESTATE PROGRAM!

DON'T PAY 6%!



Ray & Clare Lucera Saved \$4725
at 190 Forest Creek Circle!



Tom, Julie, & Squirt Rizzo Saved \$3825
at 2201 Burning Tree Ct!



Ken & Edie Rowe Saved \$3675
at 207 Miramar Circle!



Scott & Debbie Furlow Saved \$2677
at 175 Overlook Trail!

Greg & Dawn Willis, Owners

Expect Exceptional!

Read what people are saying about
us at ... www.WillisReviews.com



Rustic Roundup

After 6 Years of selling Mostly Rustic Furniture we have Expanded



...with another building full of Traditional & Contemporary Furniture



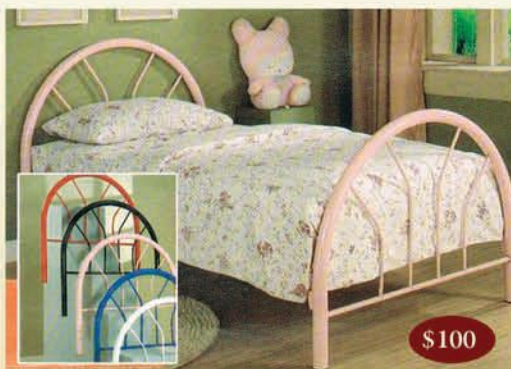
Brindleton 5-Piece Group



Ashley Sandling Table 3-Piece Set



3-piece Sets Starting As Low As \$1184



Twin Metal Beds (many colors to choose from)



Server



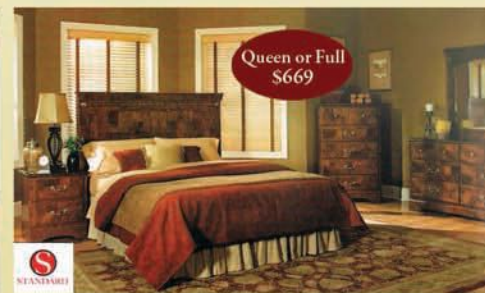
5-Piece Set: Bed, Dresser, Mirror, Nightstand, Chest



Elliot Counter Ht. Dining Set: Table, 4 Chairs, and Bench



Santa Cruz Metal Bed



Sam Miguel 5-Piece Set: Bed, Dresser, Mirror, Nightstand, Chest

Our goal is to provide the Best Products, Prices and Customer Service in Parker County
RUSTIC, TRADITIONAL AND CONTEMPORARY FURNITURE & MATTRESSES

2602 Fort Worth Hwy., #116 (1/2 Mile west of the Hudson Oaks Wal-Mart) • 817-594-9229

Hours: Mon.-Sat. 10a.m.-6p.m • Closed Sunday

Visit us online at www.rusticroundup.com

Publisher, Connie Poirier

General Manager, Rick Hensley

EDITORIAL

Managing Editor, Becky Walker

Weatherford Editor, Amber D. Browne

Editorial Coordinator, Sandra Strong

Editorial Assistant, Beverly Shay

Writers, Lisa Bell . Betty Tryon

Editors/Proofreaders, Pat Anthony

Randy Bigham

GRAPHICS AND DESIGN

Creative Director, Chris McCalla

Artists, Eduardo Barajas . Kristin Bato

Julie Carpenter . Morgan Christensen

Martha Macias . Felipe Ruiz

Brandi Morgan . Shannon Pfaff

PHOTOGRAPHY

Photography Director, Jill Rose

Photographers, Sarah Claussen

Sarah McVean

ADVERTISING

Advertising Representatives,

Steve Randle . Clea Nicholson

Rick Ausmus . Teresa Banks . Linda Dean

Mark Fox . Bryan Frye . Melissa McCoy

Lisa Miller . Carolyn Mixon

Lori O'Connell . John Powell

Linda Roberson . Joyce Sebesta

Shelby Veldman

Billing Manager, Angela Mixon

ON THE COVER



MiMi Farr and her mother, Paige Farr, cuddle with their retired show dog, Beamer.

Photo by Sarah McVean.

CONTENTS

October 2014 • Volume 4, Issue 10



8 One Dogged Youth
MiMi Farr uses her talents to showcase dogs of many breeds.

16 Planting Roots
At Home With Mark and Nicki Dover.

24 The Greatest Reward
Craig Harbuck's volunteer efforts with the Parker County Health Foundation stretch beyond himself.

30 To Prune or Not to Prune
Prepare for fall with NOW's quick guide to lawn care.



36 BusinessNOW

38 AroundTownNOW

40 FinanceNOW

44 CookingNOW

WeatherfordNOW is a NOW Magazines, L.L.C. publication. Copyright © 2014. All rights reserved. *WeatherfordNOW* is published monthly and individually mailed free of charge to homes and businesses in the Weatherford and Aledo ZIP codes.

Subscriptions are available at the rate of \$35 per year or \$3.50 per issue. Subscriptions should be sent to: NOW Magazines, P.O. Box 1071, Waxahachie, TX 75168. For advertising rates or editorial correspondence, call (817) 613-1533 or visit www.nowmagazines.com.



Editor's Note

Greetings!

Fall is a busy time of year in Weatherford. October is full of events for the entire family, so get out there and have some fun!

On October 4, Clark Gardens hosts its annual fall festival, the Spiciest Festival Around. The festival features a half marathon, chili cook-off and Scarecrow Storybook Village. It's a time of food, music and fun for

the entire family.

The 3rd Annual Hometown Heritage Stampede will be held in Historic Downtown Weatherford on October 11. The 2014 Talking Tombstones Tour is scheduled for October 18. "The Wonderful Women of Weatherford" will be celebrated during tours at Old City Greenwood Cemetery.

On October 19, strolling musicians and local artists will entertain at the Autumn Art Walk at Chandor Gardens. Chandor Gardens will host Goblins In The Gardens on October 26. Children can participate in fun games and grab treats from costumed characters.

Enjoy!

Amber

Amber D. Browne
WeatherfordNOW Editor
amber.browne@nowmagazines.com

SOUTH BOWIE

CHILD CARE & PRESCHOOL

BOBCAT SUMMER CAMP FOR SCHOOL-AGE CHILDREN

Age 6 Weeks - 12 years
"Bobcat Den" for after-school children



- State licensed
- CCS vendor
- Security entrance
- Security passes to release a child
- No charge for days closed, 20 vacation days annually at no charge

Children will receive a visit from the Weatherford Fire Department in October!

SouthBowieDaycare.com

817-596-0655

Monday - Friday 6:00 a.m.-6:30 p.m.
1718 S. Bowie Dr. • Exit 406 • Weatherford

Available for Lease

Weatherford Medical Office Space



CALL FOR INFO (817)944-7681





Institute for Rehabilitation
Outpatient Service at Weatherford
817-599-9271
Come welcome
Tara Haney Copeland, DPT, Clinic Manager



Shelby Dental

Complete Dental Care of the Entire Family



Dr. Michael D. Shelby, DMD and his staff, Family Dentistry

NEW PATIENT SPECIAL

\$15
Exam

Code SDNW1001*

\$75

Off Any Treatment

Code SDNW1002*

*New patients only.
Offer expires 12/31/2014
Offer cannot be combined with other offers.

2035 Fort Worth Hwy, Ste 500 • Weatherford, TX 76086
(Baylor Building)

Call today! 817-598-1900

"We treat you like family!"



Help us support our companies
that donate to support
Breast Cancer Awareness

jane iredale
clarisonic
RevitaLash®

Schedule your
Jane Iredale makeover today!

Receive a **20%** discount
on any of these products.

MONTHLY SPECIALS FOR OCTOBER

BOTOX COSMETIC

\$10.00 PER UNIT

JUVEDERM

SAVE \$100.00 PER SYRINGE

VOLUMA

SAVE \$150.00 PER SYRINGE

**SAVE 20% ON ALL
SKIN CARE PRODUCTS!**

MEDICAL WEIGHT-LOSS PROGRAMS

BIO IDENTICAL HORMONE THERAPY

**LASER AND RADIOFREQUENCY
SKIN REJUVENATION**

Dr. Bruce N. Epker DDS, MSD, PhD,
Board Certified

Dr. Meagan Hill, MD

• *Gift Certificates Available* •



Facial Cosmetic & Surgical Center

1020 Ft. Worth Hwy., Ste 800 | Weatherford
817-596-7666 | www.BestFaceForYou.com

Willow Park

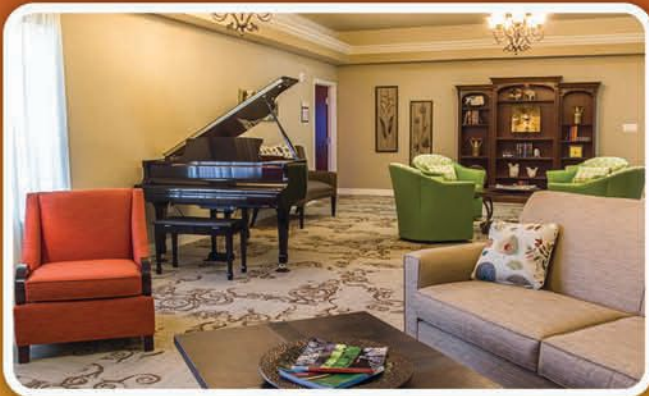
REHABILITATION & CARE CENTER

300 Crown Pointe Blvd. • Willow Park, TX 76087

817-757-1200



NOW ACCEPTING ADMISSIONS



Skilled Therapy Services

Post-fracture or Joint-replacement Rehabilitation
Stroke Recovery • Cardiac Rehabilitation
Diabetic Rehabilitation
Acute Medical Condition Rehabilitation
Skilled Medical Care Following Hospitalization
General Rehab Due to Deconditioning

Features

Private / Semi-private Suites Available
Flat-screen TV / WiFi / Direct Dial Phones
Common Areas / Chapel / Life Enrichment Room
Nutritional Meals & Snacks
In-room showers • Salon / Spa

Long-term Care

Semi / Private Rooms • Physician Care
WiFi / Flat-screen TV Provided / Cable

24-hour Nursing Care

Respiratory Care • Wound Care
Medication Management • Personal Care

SEE WHAT YOU'VE BEEN MISSING®



SUREFIRE

Surefire SOCOM Series
Sound Suppressor

\$1,169.10

SURSOCOM556MINIBK



DIAMOND

Diamond Feeders 2000lb
Varmint Proof Feeder

\$1,295.95

DIAMV2000



ZEISS

Zeiss 6-24x72 Victory
Diavari FL 34mm Rifle Scope

\$3,699.95

ZE15217958973



YETI

YETI Tundra 75 Cooler

\$449.99

YT75T



Leica

Leica 15x56 Geovid HD Laser
Rangefinder Binocular

\$2,999.00

40043



**SWAROVSKI
OPTIK**

Swarovski 25-50x80
ATS Spotter

\$2,785.00

SWA86615



Smith & Wesson

S&W Bodyguard .380 Semi
Auto Pistol Integral Laser

\$398.95

SW109380



FN HERSTAL

FNH Five-Seven 5.7x28
Blk Semi Auto Pistol

\$1,229.95

FNH3868929300



MAGPUL

Magpul PMAG M3 40
Round 5.56 Magazine

\$18.95

MAG233BLK



AAC

AAC Model-7 .300 AAC
Blackout Bolt Action Rifle

\$899.95

AAC101265



GARMIN

Garmin Alpha
Track & Train System
for Hunting Dogs

\$779.95

GAR0100104100



FOXPRO

FoxPro Fusion Digital
Game Call

\$499.95

FOXFUSION



iSCOPE

iScope iPhone Adapter
5/5s Realtree APG

\$109.95

IS8935



SPYPOINT

SpyPoint XCEL HD Hunting
Edition Action Camera

\$249.95

SPYXCELHDHUNT



FLIR

FLIR 2-16x ThermoSight
RS64 Thermal Rifle Scope

\$8,999.00

FLI43100070800



**OVER 700 DIFFERENT TYPES OF AMMUNITION,
TOTALING OVER 1 MILLION ROUNDS IN STOCK**

VISIT OUR NEW
RETAIL LOCATION!
NOW OPEN
5840 E. US HWY 287
MIDLOTHIAN, TX 76065

SWFA
OUTDOORS

ORDER NOW AT **SWFA.COM**
1.972.SCOPE IT
(1.972.726.7348)

One Dogged Youth

— By Amber D. Browne

Gracefully entering the ring with her furry companion, MiMi Farr exudes confidence as she grabs the crowd's attention. The 13-year-old holds the leash gently as she glides alongside her show dog, presenting the pup to the judges. She has trained the animal in obedience and knows everything there is to know about its American Kennel Club breed standards. MiMi is certain she'll leave the dog show a winner.

For five years, MiMi has trained dogs for show. As a 6-year-old, MiMi entered the Aledo 4-H Club as a Clover Kid. She later joined the Weatherford 4-H's Parker Pack to learn how to train show dogs. As a junior handler, her love of dogs has amplified over the years.

"All of the events for juniors encourage the kids to be good pet owners," explained Paige Farr, MiMi's mother. Handlers must learn how to groom the dog, take care of the animal properly and know the history of the breed. Over the years, MiMi has worked with various breeds including Standard Poodle, Labrador Retriever, Bichon Frisé, Borzoi and many others. One of her favorite show dogs is a now-retired English Springer Spaniel named Beamer. She co-owns Beamer and trained him for a number of years.

During competitions, MiMi and her dog are judged in several events. In the ring, MiMi will command the dog with vocal or hand signals. "You do whichever fits the dog best, so the dog can be the best it can be," MiMi explained. Obedience includes five basic commands — come, sit, stay, down and stand. The

agility event is an obstacle course for the dog. The dog must obey the handler's commands, so it stays safe on the course. The two are in sync throughout the competition. During the conformation event, the judge awards ribbons and points on the manner in which the dog moves, its facial expressions, AKC anatomy standards and other elements. In the showmanship event, the judge scores the performance of the handler.

Several other events are incorporated into 4-H dog shows. MiMi and members of the Parker Pack compete in the Drill Team competition. "It's obedience to music. We can dance. We can dress up. One year, we did the Rosie the Riveter theme," she said. "We just felt so empowered. We were so excited. We won!" During the competition this summer, the team also took home first place. The Parker Pack has been successful in Quiz Bowl competitions at the shows, as well. "We were so proud of ourselves, because we would work for hours studying," MiMi said.

In 4-H, MiMi also learns about nutrition. "We learn how important it is to be healthy," Mimi mentioned. "Nutrition is





Back on Market-
Call Today to Preview.



1461 FM 113 South, 76066

Custom 3-2.5-2 home has open concept- PLUS - Guest house features bedroom, bath, living area, large office, garage and carport. Fenced 34 acres with trees, approx. 20 acres of coastal, stock tank, 2 barns, paved frontage roads, co-op water and septic. Seller will consider subdividing property to 10 or 17 acres. Call SHARON STEPHENS.

Reduced/Priced to Sell



131 Chappel Hill Ct., 76087/ Saddle Club Estates

Spacious home on landscaped acre cul-de-sac lot with oak trees. Open floor plan features large family room with wood-burning fireplace, 4 bedrooms, 2.5 baths, large bonus room, formal dining and large kitchen with breakfast area and oversized 2-car garage. Move in ready! Call SHARON STEPHENS.



Beautiful custom-built home situated among 3 acres. This country charmer is located in a quiet subdivision NW of Weatherford. This home has a fantastic floor-plan which features spacious bedrooms with 2 master suites, 2 bedrooms share a jack-in-jill bath, 2 massive living areas, a wonderful kitchen featuring granite counter tops, gas cooktop, double ovens and SS appliances. Call Skeeter Shook 817.304.6700 for a private showing.



Making memories with friends and family is what life is all about! This home features 5 spacious bedrooms, large living area, newly remodeled kitchen with granite countertops and appliances and a large formal dining room or office. This treasured home is perfect for entertaining friends and family and includes 2 lovely treed acres. It sits among other lovely homes of its kind on a quiet cul-de-sac just minutes from downtown Weatherford.

Call Skeeter Shook to preview this great home!



Skeeter Shook
Direct: 817.304.6700
skeetershook@remax.net
www.skeetershook.com

RE/MAX TRINITY

Call one of us to power up your buying
or selling capabilities.

We stand behind you every step of
the way!



Sharon Stephens
Office: 817.596.8000
Cell: 281.795.6570
sharon.stephens@earthlink.net
www.sharonstephens.info



also good for your dog, because if your dog doesn't have good nutrition, they are not going to have a good coat, and they're not going to feel good."

MiMi is an avid photographer and competes in the Texas 4-H Dog Show photography competitions. She has won Best in Show for her photos three of the past four years. With a win, her photo graces the cover of the show's brochure. The show's costume contest is also a fun competition for MiMi. "It's really cool, because you get to dress up with the dog," MiMi said. "You tell the judge how you came up with the costumes and what your story is about." One year, MiMi dressed as a librarian and sewed a bookworm costume for Beamer. "He was so cute!"

Although Beamer isn't with MiMi full time, she has three other pups at home



"I like to win, but I also have to remember it's not just me who got me there. I've had people along the way to help me and give me advice."



— Yuliana, Minnie Pearl and Kicker. "My dogs are like my family," MiMi said. "They're my best friends. If I ask them to do something, they do it because they love me." Kicker, a Chinese Crested Dog, has a bouncy personality. "He is so much fun," she grinned. One of her goals as a junior handler is to be invited to compete with Kicker at the AKC/Eukanuba National Championship.

MiMi is a focused and determined teenager. She has been homeschooled



DREAM HOMES. For what you value most.
Family building since 1957



5TH BEST PLACE TO RETIRE
"Money" magazine

New Models Now Open!

At Sandlin Homes, our family-owned and operated business has been building homes for 57 years in top D/FW locations.

We're building beautiful designs in **Bedinger Place**, a peaceful community in the acclaimed Weatherford ISD, just minutes from Lake Weatherford.

See what's so exciting about our Sandlin Homes. Visit us online or give us a call.



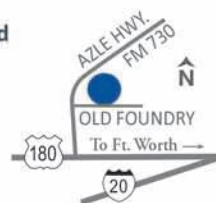
John Kasperbauer
817-283-LOAN (5626)



SANDLIN
HOMES

Homes from the \$170s to \$220s

**Weatherford
Bedinger
Place**
\$170s-\$220s
Phase IV
Now Open!



SandlinHomes.com
(800) 821-HOME (4663)



•Barns•Carports•Garages•Storages•Sheds•Warehouses

NEED A COVER FOR YOUR RIDE?



As low as
795⁰⁰



WE COVER IT ALL!



- Free Delivery and Installation
- Engineer Certified
- 90 MPH Wind Warranty Available
- Financing Available

Ask for your Fall Specials!

888-423-8772

457 N Broadway St,
Joshua, TX 76058

www.americansteelinc.com



since the third grade. Homeschooling allows her to be involved in more extracurricular activities. "It's opened a lot of windows and opportunities for me," she said. "I've been able to spend so much time with my family and my friends and doing things I love."

Paige felt called by God to homeschool MiMi and her 10-year-old sister, Beni. Paige and her husband, Danny, work together to help their daughters pursue their educational goals. MiMi enjoys biology and has studied foreign languages including Latin, Spanish and sign language. "I want to be able to communicate with different people," MiMi said. She loves to travel and can't wait to experience the different cultures of the world.

"My parents have supported me through everything I've wanted to do. Our family motto is: Do your best and never quit. My parents are awesome," MiMi gushed. "I'm just very glad my parents allowed me to be in 4-H, because it has really impacted my life."

Dr. Deborah Romack & Dr. Garrett Mulkey



We pride ourselves on providing our patients with care using a combination of the latest technology along with proven techniques provided in a gentle and caring manner.

- Veneers, bonding, whitening
- Dental care for children
- Child/adolescent/adult orthodontics/Invisalign
- Porcelain crowns, root canals and implants
- TMJ therapy and denture stabilization with mini implants

COMPLIMENTARY
NITROUS
OXIDE OFFERED
for your comfort!

Weatherford Cosmetic & Family Dentistry
www.weatherforddentistry.com

114 W. Columbia • Weatherford • 817-594-3806

Dental Sleep Medicine

Better Sleep Better Life



Do you snore loudly?

Do you often feel tired, fatigued or sleepy during the day?

Has someone observed you stop breathing while asleep?

Do you have or have you been treated for high blood pressure?

Often symptoms may include: Waking up with a headache; Dozing when reading or sitting; Restless or fatigued sleep

Oral appliance therapy is recommended by the American Academy of Sleep Medicine and the National Institute of Health in all cases of CPAP intolerance and for the treatment of mild to moderate obstructive sleep apnea. As a result, most medical insurance companies cover the cost of oral appliance therapy.



Deborah A. Romack, DDS

Weatherford Cosmetic & Family Dentistry
www.weatherforddentistry.com

We can E-File medical Insurance or Care Credit can help with out of pocket expenses.

CareCredit
Patient Payment Plans

We accept medicare

Breathe and Sleep Better For a brighter tomorrow.



The Sleep Center

We specialize in effectively diagnosing and managing sleep disorders

- Sleep Apnea both obstructive and central sleep apnea
- Insomnia
- Narcolepsy
- Restless Leg Syndrome
- Sleep disorders associated with depression, post menopause and geriatric age
- Shift work sleep disorders



Pulmonary Services

We specialize in the diagnosis and management of various pulmonary conditions

- Asthma • COPD
- Emphysema
- Chronic Cough
- Acute and Chronic Respiratory Failure
- Lung Cancer • Pulmonary Fibrosis
- Occupational Lung Disease
- Pleural Diseases • Pulmonary HTN
- Black Lung Disease



SERVICES PROVIDED

- PFT
- 6MWT
- At-home or In-lab Sleep Testing
- Durable Medical Equipment
- Wellness Program including Weight Loss Management
- Allergy Testing & Treatment
- CPET Cardiopulmonary exercise test

Olusegun A. Oseni, MD, FCCP, DABSM

Board Certified in Internal Medicine, Pulmonary, Critical Care and Sleep Medicine
Independent Member of the Medical Staff at Weatherford Regional Medical Center

Van-Minh Nguyen, MSc, PA-C

We strive to make sure your visit with us is pleasant and life changing.

945 Hilltop Drive, Suite 101 • Weatherford



**LUNG & SLEEP
SPECIALISTS
OF NORTH TEXAS**

817-594-9993



www.lungandsleepspecialists.com

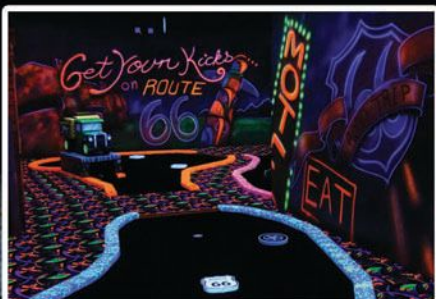


NOW OPEN!

Indoor:

- Blacklight Miniature Golf
- Spin Zone Bumper Cars
- 3 Batting Cages
- 2 Practice Tunnels
- State-of-the-art Arcade Room
- Full Snack Bar
- 4 Party Rooms (Booking NOW!)

Like us on Facebook for up-to-date info & specials.



Buy One Miniature Golf Get One FREE!

1819 S. Main St. • Weatherford, TX 76086 • 817-980-2426
(same building as Tractor Supply)

www.holeinfunentertainment.com



"There were times where I had to sit down with her and ask her to pick and choose," Paige said. "She has to have time for her friends and still be a kid. I want to make sure she doesn't get too busy, and her grades have to stay up."

As a straight-A student, MiMi occasionally stresses over her grades. "I want to be the best I can be. I want to be able to do whatever I want to do when I go to college," MiMi said. She would like to attend Texas Christian University and dreams of becoming a lawyer, news reporter or criminal investigator.

In her free-time, MiMi likes to have fun and enjoys reading, watching movies and riding roller coasters. She always has a smile on her face. "I like to be happy. It's my favorite emotion," she said. "I like to think that a smile or a hug can just make someone's day."

As she enjoys her youth, MiMi plans to continue to excel in her studies and her competitions at dog shows. During her years training dogs with 4-H, she has learned patience, work ethic and good sportsmanship. "Even though I may not win, that means someone else has, and they've worked just as hard as I have," she said. MiMi won Best Junior Handler in 2014 and Best in Show Puppy at an international show in Waco earlier this year. "I like to win, but I also have to remember it's not just me who got me there. I've had people along the way to help me and give me advice," MiMi said. "Showing dogs has impacted my life so much. It's been an amazing experience."

NOW

"Bringing Authentic Mexican Flavor to Town"

Tio Lucas

RESTAURANTE MEXICANO



**WEDNESDAY
CHEESE
ENCHILADA
Special
\$5.79**

(Dine in only. No substitutions)

216 WEST HWY. 1-20 • WEATHERFORD • (682) 262-1300

JOIN US OCTOBER 25TH 5PM-8PM

Fall Festival!

WEATHERFORD, TX

FREE
Fun Booths
Cotton Candy
& Popcorn

**Our way of Giving Thanks to the
community for what they have
done for Jerry's!**

Held at

Durant Toyota



TOYOTA

Let's
Go
Places

3131 Fort Worth Hwy
Weatherford, TX 76087
(888) 251-4103



Mark and Nicki Dover moved to Aledo from Metro DC/northern Virginia in 2012. As a career military family, they had lived in many places throughout the United States and traveled in Europe and the Middle East. After 21 years of military housing, the couple knew what they wanted.

Mark and Nicki met at Auburn University in Alabama. Although Mark lived in the Houston area during his middle school years, as a couple, they had never lived in Texas. “We did drive across Texas a couple of times. It always took two days,” Nicki said, laughing.

Mark retired and accepted a job with Lockheed. He arrived in Texas, while Nicki stayed with the kids until a home was found. Initially, they planned to settle in North Dallas-Fort Worth. However, one commute did it for Mark. Years of living in metropolitan areas and fighting traffic left him looking farther west. Of course, with three children, they also wanted a great school district.

Planting Roots

— By Lisa Bell

At Home With Mark and Nicki Dover





The real estate agent they used through the United Services Automobile Association (USAA) home-finder program located a house in Aledo. The decor didn't particularly fit their tastes. However, it met Nicki's must-have list. "I told Mark if he was moving me to Texas after 21 years of living near water, I had to have a pool," Nicki said, "and lots of trees, plus a good neighborhood for the kids."

Nicki's mother always had a keen eye for decorating and redesigning, which helped Mark and Nicki look past the surface, seeing great possibilities. Putting in hard work, they developed a primarily modern home with touches of heirlooms and reminders of places they had lived. Nicki added their personalities, bringing the home to life.

The Navy had reassigned Mark every two years, so they had never purchased a home or spent a lot of time decorating. Coming to Texas gave them the



**Celebrating
25 Years
of Business!**

CHRIS' SERVICE MUFFLER SHOP

Chris' Service Muffler, Inc.

1102 Ft. Worth Hwy. • Weatherford, TX 76086
(817) 613-0011 • www.chrismuffler.com
Mon-Fri 7:30-6pm • Sat 7:30-2pm • CHRIS NEWTON, Owner

Complete Exhaust Service • Performance Diesel Custom Pipes
Catalytic Converters - EPA Appr. • Brakes • Shocks • Struts • CV Joints

GUY A. WALKER, D.D.S., PLLC

Guy A. Walker, D.D.S., PLLC
General Dentistry

- ❖ Cosmetic Crowns
- ❖ White Fillings
- ❖ Bridges
- ❖ Implants
- ❖ Periodontal Care
- ❖ Customized Dentures
- ❖ Root Canals
- ❖ Nitrous Oxide (Laughing Gas)

*Conservative, Quality
Dentistry in a Caring
Environment*

Accepting Most Insurance
New Patients by Appointment

817.594.7427

www.guywalker dental.com

200 E. RENTZ STREET
WEATHERFORD, TX 76086



opportunity to plant roots — literally and figuratively. Alongside the vast number of trees on the property, they have a vegetable garden and decorative plants.

Never knowing exactly what type of housing the military would provide, Nicki could never justify buying a formal dining room set. The new house had a formal dining area that she has transformed into a parlor. Removing an elegant chandelier, they installed a two-bladed fan and strategically placed chairs and a coffee



table, plus a piano one of their daughters played. From the entryway, the parlor invites visitors to come, sit and talk. A Victrola Nicki's grandmother received for her 16th birthday stands as an entryway sentinel, guarding memories of long-ago days when families used parlors. A rug from Turkey and an Aborigine woman's painting complete the comfortable setting.

The large kitchen features granite countertops. The couple was able to

match the granite to add a large island, which doubles as an eat-in breakfast bar. In the dining area, a second two-bladed fan replaced another chandelier and helps circulate air through the lower level of the two-story home.

Neutral colors flow between the rooms. A soft grey tone on the living room shelves accentuates a variety of objects from all over. New to Texas, they didn't inundate their home with a country

White's Funeral Home

Our family serving your family since 1908



Front left to right: Anita White, Bob White, Kari Drake, Mark Reynolds
Back left to right: Jim Cleaver, Bruce Duncan, Richard Woodman, Jay Morrill

Full-service Funeral Home • Cremation Services • Pre-need Plans

Azle • Springtown • Mineral Wells • Weatherford • 817-596-4811 • www.whitesfuneral.com
130 Houston Ave. • Weatherford TX



Now Open in Aledo

PlainsCapital Bank's newest branch serving Aledo and Willow Park is now open. For over a quarter of a century we have served the great state of Texas, forging long-lasting relationships and proudly utilizing our financial strength to help individuals and businesses prosper and grow. Visit our new branch today!

126 S. Ranch House Rd.
Willow Park, TX 76008

817.840.4444
PlainsCapital.com

PlainsCapitalBank 

© 2014 PlainsCapital Bank  Equal Housing Lender Member FDIC

**COME TRY OUR
PUMPKIN PIES**

\$7.99

Pork, Chicken or Turkey Sandwich,
Fruit Pie & 16-oz. drink.
With this coupon.



817-599-4229

1921 South Main St.

  Weatherford 

Open Daily 7AM - 9PM





Reclaimed Solid Wood
Queen Bed \$1188.00
Chest \$678.00



Sealy
Posturepedic
MATTRESSES

LAYAWAY & FINANCING AVAILABLE

- Living Rooms
- Dining Rooms
- Bedrooms
- Mattresses
- Accessories
- Occasional Tables
- Recliners



Chenille/Leather
Decorator Chairs
NOW ONLY \$399.00 ea.



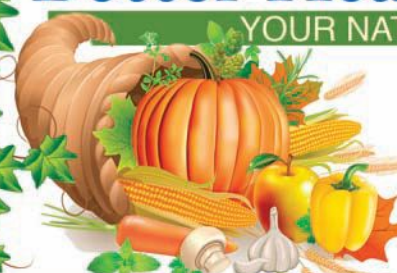
Antique White
Solid Wood
Chest of Drawers
ONLY \$228.00
Queen bed \$569.00

Furniture & More

1508 Fort Worth Hwy
817-341-4449
www.furnitureandmoretexas.com

Better Health Market

YOUR NATURAL HEALTH STORE



20% Off

TOTAL PURCHASE

1 coupon per customer, per visit.
Not valid with any other special offers.
Exp. November 15, 2014

1716 SANTA FE DR. • WEATHERFORD, TX 76086 ☎ 1450 E. HWY. 377 • GRANBURY, TX 76048
817-596-8818 817-578-3131

The Plowman family and staff invite you to join us
December 7, 2014, at 3:00 p.m.

for our 9th Annual Holiday Memorial Service.
Each family will be given the opportunity to
place an ornament on the memorial tree in
memory of their loved one. We will also have
guest speakers, music and refreshments.
Space is limited, so please RSVP to 817-594-2747



Full-service Funeral Home
Cremations
Advanced Funeral Planning

*Serving every family as if
you are a part of our own.*

Galbreath-Pickard
FUNERAL CHAPEL
Since 1954



James R. Plowman • jamesplowman@gpfcnet.com • Norma Plowman
913 N. Elm St., Weatherford, TX 76086 • 817-594-2747 • 800-593-2747



look. They did, however, find a side table made from horns and cowhide, a subtle touch to their new residence.

Across the back of the house, large windows overlook the backyard. Conversational-style furniture on the covered patio quickly became a favorite place for gathering. The pool design blends with the wooded look of the yard, appearing more like a rock-lined diving hole.

Back inside the house, Nicki changed up a corner half-bath with a splash of color. She took down the traditional mirror, replacing it with gecko-shaped mirrors. “No one stands here putting on makeup or anything,” she said. A freestanding toilet paper holder replaced an awkward-angled wall version.

Nicki works for the Aledo ISD, so having office space is a bonus. To decorate her latest room-in-progress, she hung National Oceanic and Atmospheric Administration charts featuring all the places they lived. She also displayed a Native American whale carving from Washington state.

At the top of a curved staircase, a large room explodes with plenty of space for their kids to entertain friends. Their son, Collin, uses the room often and refers to it as his living room. The picture hanging near the television is reminiscent of the family’s backyard view they enjoyed when living in Hawaii. The simple decor shouts relax and have fun.

The sixth-grader’s bedroom fits his personality — blue walls, sports and cars everywhere. Nicki also included Route 66 memorabilia, because he loves everything about the famous route they once drove. A Jack-and-Jill bathroom connects Collin’s room with what is now an extra room. The large, plain mirror had no personality, so Mark custom-built a frame. Nicki painted it red to tie the two rooms together.

Their eldest child, Rachel, graduated and moved to Weatherford, where she began working while waiting for her first



semester of college. When she visits for the weekend, a daybed gives her privacy and a place to sleep. Any other time, the room hosts several instruments and prints, revealing the family's love of music. An audience of bunnies sits near a raised ceiling. The attic structure gave the room a higher ceiling, and seemed out of place to Nicki. By painting the ceiling and top foot of the wall, she created the illusion of a tray ceiling.

Most of her life, their daughter Lindsay had loved mermaids. As a 10th-grader taking possession of her big sister's room, she convinced her mom the sea creatures needed to go. A print hand-painted by one of Nicki's friends remains as a reminder of younger days. Lindsay loves purple. Two shades of her favorite color, including large dots on one wall, bring a smile. A band of blue looks almost violet, but matches the lone mermaid picture, while a small window gives the teen a beautiful wooded view.

Nicki's favorite room is the Hawaii fun room. The walls, painted in deepening shades of ocean colors, take her back to one of her favorite places. Photos she took while living in Hawaii dot the walls. Bamboo graces the room, and a hula skirt covers the window. Mark's surfboard and skateboard hang on one wall. The only upstairs bedroom with a television, the kids sometimes use it when friends sleep over. But for Nicki, the room is a welcome retreat where she slips into the corner chair and relaxes.

The adjoining bathroom continues the ocean theme. Mark built a frame for the mirror in this bathroom, as well. Nicki chose to leave the natural cedar rather than paint it, but she replaced the standard light fixtures with a decorative option.

Mark and Nicki have transformed the interior surfaces of their new place and added personal touches to the exterior. Little changes brought the family's character to a house and created a home — a home of their own at last. **NOW**

**Full Custom Restoration is what we LOVE to do!
We restore to its original beauty!**



**Call Today
for a FREE
Restoration
Estimate**

DADDY'S
Classics And Restoration

817.444.3227

704 NW Parkway, Azle, Texas 76020

www.daddysclassiccars.com

We breathe new life into classic and custom cars, muscle cars, hot rods and much more! We also buy and sell classic and collectible cars.

**Come taste
The 50s
Again**



It's Burger Time!

Buy any Malt or Shake GET 2ND REG. SIZE FREE
(equal or lesser value) With coupon only. One coupon per visit, please. Not valid with other offers. Exp. 10/31/14

FREE Pint of Ice Cream
Buy a quart of homemade ice cream and get a pint for FREE
With coupon only. Not valid with other offers. One coupon per visit, please. Exp. 10/31/14

BUY ANY SANDWICH AND GET A REG. BURGER FOR .25

BUY ANY SANDWICH AND GET SECOND 1/2 PRICE
(Equal or lesser value) (Cheese extra)
With coupon only. One coupon per visit, please. Not valid with other offers. Exp. 10/31/14

9 FLAVORS OF HOMEMADE ICE CREAM

**2038 Ft. Worth Hwy.
at the Azle Hwy. (FM 730)**
Mon-Sat: 9:45AM - 9:30PM
Sun: 12 Noon - 9:30PM
817-594-2524

the Malt Shop

2033 MOTORSPORTS.COM

"WE ARE YOUR DEALERSHIP ALTERNATIVE"

**AT 2033 AUTOMOTIVE & TRUCK REPAIR WE
HAVE FACTORY-TRAINED TECHNICIANS.**

Only Authorized Castrol Dealer in Parker County.



**2033
EXPRESS
AUTO CARE**



Oil Changes
Lube Service

Inspections
Tire Rotations

**THE MOST TRUSTED NAME IN
TRUCK & AUTO REPAIR IN ALL
OF PARKER COUNTY, **PERIOD!****

**\$5 OFF ANY OIL
CHANGE**

WHEN YOU MENTION THIS AD.



CALL FOR DETAILS • 817.341.2033 • 2033 FM 920 (Peaster Highway)

LITTLE FEATHER EQUESTRIAN CENTER

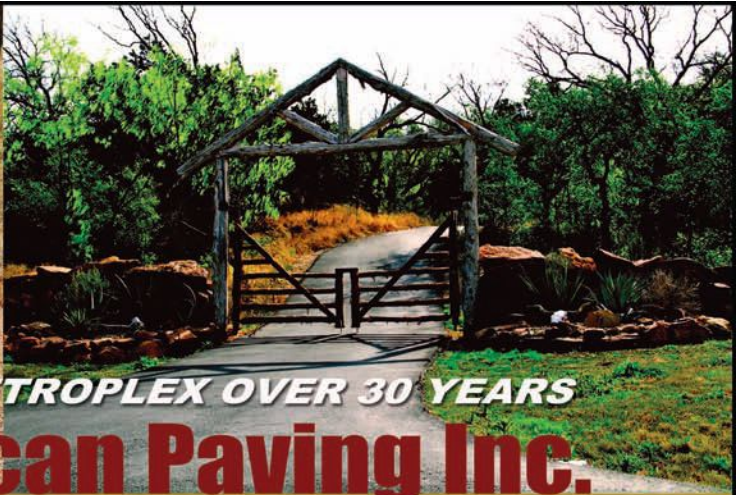
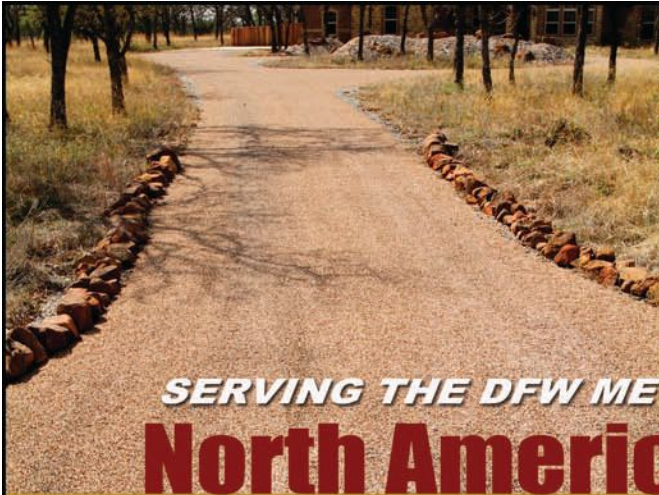
Hunter/Jumper
Board • Training • Lessons • Sales

- Trainer has more than 10 yrs. Professional Experience
- Certified by the American Riding Instructors Association
 - English riding lessons for all levels (ages 7 & over)
 - New students get a free 30-min lesson



Contact Rebecca
432-853-1008
871 Pamela Kay Ln., Weatherford, TX
www.littlefeather.org





SERVING THE DFW METROPLEX OVER 30 YEARS

North American Paving Inc.

A Full-Service Paving Company

COMMERCIAL & RESIDENTIAL

**DRIVEWAYS • SUBDIVISIONS • MUNICIPAL • PARKING LOTS • CHURCHES • CONCRETE
EXCAVATIONS • ASPHALT • SEAL COATING • CHIP & SEAL PENETRATION**

Specializing in Asphalt & Chip & Seal Paving.

napaving@msn.com

www.northamericanpaving.com

**LOCALLY OWNED AND OPERATED
FREE ESTIMATES**



WEATHERFORD, TX

817.426.4469

Gift & Craft **MARKET**

**Trinity Christian Academy
Willow Park, TX**

*4954 E. I-20 Service Road South, Willow Park, Texas
(Between Ranch House Rd. & Mikus Rd.)*

**Kick Off Your
Holiday Shopping With Us!
Saturday, Nov. 8th – 9am to 5pm
Sunday, Nov. 9th – 12pm to 4pm**

FREE ADMISSION
*This Event Will Be Held in TCA's Barber Gymnasium, Lobby & Cafeteria
Concessions & Hourly Door Prizes!*

Many Thanks To Our Presenting Sponsor!



Silver Bells Sponsor

First National Bank

Media Sponsor
PARKER COUNTY
TODAY
OUR COUNTY'S MAGAZINE

Holly & Ivy Sponsors



The Greatest Reward

— By Amber D. Browne

Giving back to the community has always been an important part of Craig Harbuck's life. "I can think of nothing more rewarding, than helping people get what they need. Volunteering my time always comes full circle with regard to the initiative and the outcome," Craig stated. Volunteerism is rewarding for both the volunteer and those helped along the way. Over the years, Craig has served on committees and boards with numerous organizations, including his current stint as chairman of the board of Parker County Health Foundation.

Thousands of people in Parker County do not have the funds necessary to meet all of their health care and well-being needs. The mission statement of the 501(c)(3) charitable nonprofit organization is to enhance the health and well-being of Parker County residents by providing funds to help access health-related services. The funds for these services are made possible through the efforts of the Foundation's board and the community as a whole. "Parker County Health Foundation helps fill a void in health care, therapeutic services and nutritional services in Parker County," Craig explained.

With nine partner agencies, PCHF funds a variety of services. "If you are struggling financially, I think the most challenging part of that struggle would be if you couldn't afford health care; if you couldn't get prescription medication; if you couldn't get some sort of palliative care; or if you couldn't get those nutritional supplements you have to have," Craig explained. "There are organizations that provide it, and we just happen to be an organization that helps fund those organizations. It comes full circle, because you get to see people helping people."

Organizations funded by PCHF must submit a grant application each year, and once approved and funding is received, the partner agencies provide



Parker County Health Foundation volunteers Zan Prince and Craig Harbuck stand ready to assist health-related organizations in the community.

ward

quarterly financial reports outlining how the money was spent. Kingdom Smiles Ministries receives grants to provide dental care to Parker County residents. Other partner organizations include Freedom House of Parker County, which assists victims of domestic abuse, sexual assault and violent crime. With PCHF grants, Freedom House provides therapy to victims. "The Center of Hope is a big partner of ours — both for what they do in regard to day-to-day operations and in providing financial support for prescription medications," Craig explained. Parker County Committee on Aging uses PCHF funds to provide nutritional supplements and medications to community members. "We also partner with Child Protective Services."

Each October, PCHF holds a consistently sold-out fundraiser, which ultimately raises about \$80,000 annually for Parker County ladies. The Pink Luncheon raises funds to help Parker County women who can't afford or don't have access to mammograms. Zan Prince, who serves on the PCHF board, is chairman of the 9th Annual Pink Luncheon. "We live in the most generous and caring county and the most extraordinary state in the country," Zan said. "People acknowledge there is a need for people to have access to medical services. The people in this county are enthusiastic about taking care of an unmet need."

This year's Pink Luncheon will be held at a new venue on October 10. The luncheon has been sold-out every year, and the PCHF board hopes the larger venue at New River Fellowship will allow more people the opportunity to get involved. "It's a community coming together to meet a need and have fun while we're doing it," Zan shared. "It's going to be great. We have a wonderful



ENDEAVOR
WALL HOMES
AVAILABLE NOW!
IN ALL 4 WEATHERFORD NEIGHBORHOODS

334 BEAR COUNTRY • 3,198 SQ. FT.
4 BD, 3 BTH, 2 DINING, MEDIA ROOM,
1-ACRE LOT.



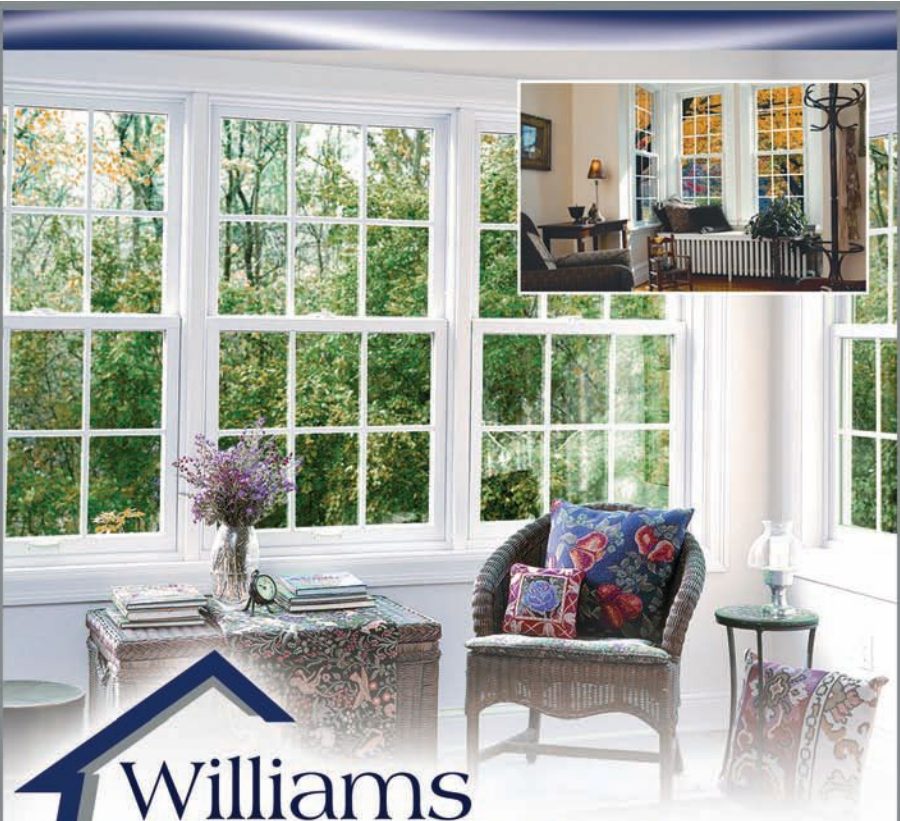
Your Idea of *Home*®

NEW MODEL NOW OPEN!

• CUSTOM CHANGES • NEW PHASES AVAILABLE NOW • 4 PARKER COUNTY NEIGHBORHOODS


VICKIE BRADDOCK • (817) 276-3439 • WWW.WALL.COM


LOCATED BEHIND MARY MARTIN ELEM.



Williams Windows

EXPERTS IN ENERGY EFFICIENT HOMES

Andersen WINDOWS • DOORS  **817-781-6161**

WILLIAMSWINDOWSDOORS.COM 

\$500 OFF

WITH PURCHASE OF 5
OR MORE WINDOWS
WITH MENTION OF THIS AD

20% OFF

ENTIRE PURCHASE
INCLUDING LABOR
WITH MENTION OF THIS AD

Compare Shipping Rates.

Your Package. Your Choice.

Additional Services

- Shipping Services
- UPS/FedEx/USPS/DHL
- Packaging Supplies
- Moving Supplies
- Office Supplies
- Notary
- Mailbox Rental
- Color/B & W Copies
- Shredding
- Passport Photo
- Faxing
- Laminating
- Binding
- Wide Format Printing
- Greeting Cards
- Gifts
- Boxes of All Sizes
- Mobile Printing



Next door to Kincaid's Hamburgers
220 Adams Drive, Ste 280
Weatherford, TX 76086

Phone: 817-599-6607

Email: aim115@aimmailcenters.com

Web: www.aimmailcenters.com/115



Store Hours:
Mon-Fri 9am-6pm
Sat 10am-4pm
Sun Closed

DHL
AUTHORIZED SHIPPING CENTER
**International Shipping
Also Available!**

\$10 OFF

Offer Expires: 10/30/14

**Any UPS or FedEx Shipment
Minimum of \$20 or More.**

Valid at participating AIM Mail Center locations. Not valid with any other coupon or discount. Additional restrictions may apply. Each AIM Mail Center location is independently owned and operated. ©2014 Annex Brands, Inc.



speaker and a lot of really great raffle items." With the help of PCHF and other volunteers, the Pink Luncheon is sure to be another success.

PCHF partners with Careity Foundation to provide services including mobile mammograms to Parker County women who may not be able to afford the service or have access to it. "It's real easy to put it off, but when it's close, accessible and encouraged, these women take advantage of the opportunity and lives are saved. That's the bottom line," Zan shared. "Lives are saved, and families are changed. People know somebody in the community is thinking about them and helping them with their medical needs."

Craig first got involved with PCHF in 2008 for just that reason. He heard tremendous things about the foundation from several community leaders. That was all it took, and he soon joined the board. Along with his volunteer work with PCHF, Craig spends time volunteering with the Business



Fall Tint Deals

Up to

**\$75 OFF
Complete Tint**

Call for details.

OVER 30 YEARS
EXPERIENCE



COME SEE OUR SPECIALS DURING THE MONTH OF OCTOBER

**THE TINT
SHOP**

HAVE YOU BEEN TO OUR NEW LOCATION?

1137 FT. WORTH HWY

NE CORNER OF BANKHEAD AND FT. WORTH HWY

HOME • AUTO • COMMERCIAL
WINDOW TINT • SIGNS • BANNERS
VEHICLE GRAPHICS & MORE

ASK ABOUT OUR NEW WINDSHIELD TINT

817.694.0111

TINTSHOPTX.COM

**FALL
STYLES**
arriving daily!

THE
**HOPE
CHEST**
thehopechestresale.com

- ✓ Apparel & Jewelry
- ✓ Baby Items
- ✓ Furniture
- ✓ Home Décor
- ✓ Housewares



**Tues-Sat
10AM-6PM**

**1020 Fort Worth Hwy.
817-757-4410**

All proceeds benefit:



**Center of Hope
PARKER COUNTY**





Volunteering is a way of life for Craig, shown here with Catherine Tietjen, director of Freedom House.

Development Group of Aledo, the Armed Forces Bowl and Tarrant County College Foundation. Craig's desire to help others seems to be a family affair. He and his wife of 25 years, Lori Harbuck, previously served as youth counselors at church. Lori teaches fourth grade in Aledo and has been involved with many of the school district's teaching initiatives. Their three children, Matthew, 23; Madison, 21; and Beverlee, 18, also volunteer their time to serve others. "They've all gone on mission trips during the summer. They serve meals to the homeless at various times of the year and give their time monthly to Catholic Charities," Craig shared.

Although volunteerism can be time-consuming, Craig's family supports his desire to help others. "I think if any man has a big a heart as my dad, I would be lucky to marry him," Beverlee shared. Beverlee hopes to join her brother Madison as a student at The University of Texas at Austin in the fall of 2015. She has written an initiative

COMMITTED TO EXCELLENCE
EXCEEDING EXPECTATIONS

PrimeLending
 A PlainsCapital Company..

817.596.7878
524 SANTA FE DRIVE,
WEATHERFORD, TX

ERIC SCHROEDER
 MORTGAGE LOAN OFFICER
 ESCHROEDER@PRIMELENDING.COM
 NMLS ID# 176686

SHAUNDRA HARDT
 MORTGAGE LOAN OFFICER
 SHARDT@PRIMELENDING.COM
 NMLS ID# 419421

PAUL SYPTAK
 MORTGAGE LOAN OFFICER
 PSYPTAK@PRIMELENDING.COM
 NMLS ID# 176507

All loans subject to credit approval. Rates and fees subject to change. Mortgage financing provided by PrimeLending, a PlainsCapital Company. Equal Housing Lender. © 2014 PrimeLending, a PlainsCapital Company. PrimeLending, a PlainsCapital Company (NMLS: 13649) is a wholly owned subsidiary of a state-chartered bank and is an exempt lender in TX V121013.

Fancy's

Plus Size Resale Shop

Sizes XL - 5X
Buy • Sell • Consign

Clearance items added weekly!

We Also Carry
Shoes, Jewelry,
Purses & Accessories

www.fancysplussizeresaleshop.com

Mon. - Fri. 10:00 - 5:30 • Sat. 10:00 - 4:30

318 D Santa Fe

Weatherford

817-599-4944

Fall is the perfect time for camping

in a New or Used RV from

Bennett's
Camping Center

We have something for every budget & every tow vehicle!

Bennett's
Camping
Center & RV
Ranch

817-279-7500

2708 E. Hwy. 377, Granbury
View Inventory at

bennettsrv.com

MYSER ORTHODONTICS **2nd Annual Halloween Candy Buy Back**





Myser Orthodontics wants to buy back your Halloween candy and then send it to U.S. Military troops overseas.

OPERATION GRATITUDE
SENDING CARE PACKAGES TO U.S. MILITARY

We will collect candy on October 27th - November 11th. Participants will earn \$1 for every pound of candy they bring in. This event isn't just for patients, it is for anyone that would like to participate! We encourage you to bring a Thank You letter to send to the troops. Please call to verify which location we are in before you visit. 817-441-8700.

Aledo Location: 311 S. FM 1187, Suite D • Aledo, Texas 76008
Willow Park Location: 134 El Chico Trail, Suite 102 • Willow Park, Texas 76087
817.441.8700 • AledoBraces.com

f b i

WERE YOU IN A CAR ACCIDENT?
Insurance companies DON'T work for you, but WE DO!
WE'RE ON YOUR SIDE.

Law Offices of Scott, McNeill & Burney, PLLC

Achieving maximum results is our top concern.

PERSONAL INJURY
AND ALSO ...

- FAMILY LAW
- CRIMINAL DEFENSE
- TRAFFIC TICKETS



(817) 441-1919 | 9946 E. Bankhead Hwy., Aledo, TX 76008 | www.aledolegal.com

THE PERFECT PLACE FOR YOUR Perfect DAY.




QUIET, PARK-LIKE SETTING FOR ALL OF YOUR SPECIAL EVENTS.

- THREE GAZEBOS
- BRICK WALKWAYS
- KITCHEN AREA
- INDOOR SANCTUARY (CAP. 120)
- KOI PONDS

PRAISE PAVILION WEDDING & EVENT VENUE
CONTACT BARBARA LITTLEPAGE
817-829-5930 FOR MORE INFO.
Located At The Brock Junction, also the home of Cutting Capital Fellowship Church



to help the homeless that she plans to implement on campus. Students can use their school identification cards at kiosks on campus to access a bag of necessities and nonperishable items to deliver to a homeless person. Beverlee hopes the idea will be implemented at other universities. "I know someday I will need help, and I would like someone to do the same. It's not like I do things to get something in return. I do things, because I think it's the right thing to do," Beverlee stated.

And for Craig, the right thing to do is to continue volunteering with Parker County Health Foundation. "There are a lot of great organizations that pull at your heartstrings, so when you volunteer your time, talent and resources, you have to be very passionate and intentional about it," Craig explained. The Pink Luncheon is PCHF's main fundraiser of the year, but the board would like to implement additional fundraisers and incorporate their partner agencies into the events. With creative members on the PCHF board, great things are in the works. "If you bring a community together, there are more opportunities to raise awareness, raise money and help people. After all, that is why God put us on this earth — to serve and help others." **NOW**

Editor's Note: For more information, visit www.parkercountyhealthfoundation.org.

SAVE ON YOUR ELECTRIC BILL



Precision Fall Tune Up

FREE Freon (up to 1 lb.) **\$89** One Year Breakdown Guarantee!

6 Month No Breakdown Guarantee!

Some restrictions may apply.
Expires 12-15-14.

LIGHTFOOT MECHANICAL, INC.

AIR CONDITIONING • HEATING • PLUMBING

"We're the Good Guys!"

817-596-0309



\$35 OFF

**Service Repair
A/C or Plumbing**

Two year Repair Warranty

Some restrictions may apply.
Expires 12-15-14.



License #TACLA001791C • M-37637

Lightfootmechanicaldfw.com

BlueWater POOLS L.L.C.

- ▶ WEEKLY SERVICE
- ▶ NEW CONSTRUCTION
- ▶ RENOVATIONS & REMODELING
- ▶ EQUIPMENT REPAIRS/UPGRADES
- ▶ PLASTER, TILE & COPING

- ▶ OUTDOOR KITCHENS
- ▶ DECKING
- ▶ SALT SYSTEMS
- ▶ WATER FEATURES

We ALSO offer Landscape Lighting

Let us light up your life and add beauty to your outdoor surroundings!



FREE FIRST 6 MONTHS
Weekly Pool Maintenance
with each new pool build


You can just have a pool, or you can have a BlueWater pool!

Our showroom is located at 10424 FM 1902 • Crowley, TX



817.297.7120

www.BlueWaterCustomPools.com



TO PRUNE OR NOT TO PRUNE



— By Randy Bigham

The onset of harvest time brings more than the turning of the leaves. For most of us, it means raking them up after their inevitable descent, transforming lawns and driveways everywhere into a crunchy nuisance. Autumn's inception also inspires well-meaning homeowners to prune branches and hedges while the weather is still nice. But increasingly, the word from lawn care specialists and gardeners is to hold off on pruning until winter. Resisting the urge to prune in the fall is the advice of



famous green thumb Paul James, host of HGTV's Gardening by the Yard. "The tender new growth that would result may not have a chance to harden sufficiently before cold weather arrives," Paul explained, "and that can lead to damage."

Horticulturalist Deborah Brown agreed. "Pruning in late winter, just before spring growth starts," she said, "leaves fresh wounds exposed for only a short time before new growth begins the wound-sealing process."

Gardening author Mike McGrath is more adamant in his advice. "The rules of fall pruning are simple," he maintained. "Prune nothing in the fall! Nada! Zilch! Ladies, hide the pruners from helpful husbands!"

But we yard lovers needn't fret. There's plenty of lawn and garden maintenance for us to accomplish long before winter wields its icy claws.



Lawn cleanup and maintenance

Keeping lawns free of leaves is the main objective in the fall, so let the raking begin. And we may as well do it the right way. Yes, there's a method to leaf-free madness, as Barbara Pleasant outlines in her book *Compost Gardening*. She recommends raking with the wind (and downhill when possible). Matching your rake to the kind of leaves in your yard and to your body type is also suggested. Your favorite mom-and-pop garden

Fort Worth Tree & Pest Specialist



Family Owned and Operated.

- Residential/Commercial Pest Control
- Insect & Disease Control For Trees, Shrubs & Turf
- Fertilization & Insect Soil Injections

Fire Ant Treatment ••• Oak Wilt Treatment



Certified Arborist & TX Licensed Pest Applicator



817-441-2276



Pro Battery

New & Environmentally Friendly Reconditioned Batteries And Recycling Center

STARTING AT \$34.99



We Carry Batteries For:

Auto • Trucks • RVs • Lawnmowers • Boats
Golf Carts • Commercial Equipment

New & Reconditioned

NEW LOCATION!

2413 Ft. Worth Hwy / Hwy 180 Weatherford, TX

WWW.PROBATTERYTX.COM



Two locations to serve you: Weatherford • 817.594.5599 or Ft. Worth • 817.885.7474

GET MORE FOR LESS

PROMOTIONAL PRICES START AT
\$19.99/mo
FOR 12 MONTHS
NOT ELIGIBLE FOR HOPPER OR HD.

ACT NOW AND ALSO GET:

FREE PREMIUM CHANNELS

for 3 months

HBO

CINEMAX

SHOWTIME

starz

BLOCKBUSTER @HOME

Offer subject to change based on premium channel availability.
All offers require 24-month commitment and credit qualification.

CALL OR VISIT YOUR LOCAL SHOWROOM

Offers end 1/16/15. Restrictions apply. Ask for details.

RETAIL_9612_11336

dish
AUTHORIZED RETAILER

SOUND EXPRESSIONS
212 SANTA FE DR.
WEATHERFORD
817-594-2423

**SUMMER IS OVER
KEEP YOUR COLOR!**

20% OFF
ALL PACKAGES
& PRODUCTS
\$15 SPRAY TANS

SunKissed
Tan & Beauty Lounge
817-598-1999

**f FOLLOW US FOR
FOR DISCOUNTS, CONTESTS & MORE!**

3296 Ft. Worth Hwy, Hudson Oaks • just down from Ultimate Cup Cakes

Interior & Exterior Remodeling • Tile • Painting • Sheetrock Repair

**Chapman's
Carpentry**
Off-duty Firefighter

817-946-6787

Qualiy Work at a Reasonable Price • 31 Years Experience

**No Job
Too
Small!**

**BURLESON
DRIVING ACADEMY!**
Now Enrolling in Weatherford!

✓ We Have EASY
PAYMENT PLANS!
✓ Free Shuttle Pickup!

**SPECIAL TEEN
DRIVER'S ED
\$299**
Total cost with this ad.
No hidden fees. For Limited
Time. Not valid with
other offers

**Enroll
Today! 817-599-0099**
(Next to Big Lots) www.BurlesonDriving.com



centers, as well as your local big box stores, offer a range of sizes and weights.

Most importantly, use your shredded leaves as mulch. "Leaves contain some of the nutrients that trees and shrubs have taken out of the soil," Barbara wrote, "and it's in keeping with nature's plan that you should give back some of those purloined nutrients by mowing over part of your annual leaf fall, thus returning organic matter to the soil." Ellis County Master Gardeners are in favor of this form of organic recycling, advising a 3- to 6-inch layer of leaves as mulch in vegetable and flower beds and around trees and bushes.

Writer and avid gardener Lisa Kaplan Gordon suggests patching bare or thin spots of grass during the fall. Remove dead grass and replace with an inch of compost and an appropriate grass seed suited to shade or sun. "You'll want to keep the patch moist," Lisa said, "so lightly water once a day until the seed germinates, and the new grass gets about 1-inch tall."

Planting and transplanting

Fall is a good time for planting vines and ground covers from containers. Cool-season annuals like pansies, daffodils, dianthus and ornamental kale or cabbage are ripe for autumnal planting, as are leeks, garlic and onions, especially



those “from bulbs in soil enriched with organic matter.”

Paul James believes container plants deserve more attention from fall gardeners than they receive. “You can take cuttings of various annuals and root them in either water or a potting medium such as vermiculite, perlite or soil-less potting mix,” he instructed. Paul also recommends transplanting potted perennials into the garden.

Fertilizing

Roger Cook of *This Old House* magazine reminds his readers fall is the optimum time for fertilizing their lawns. “Taking the time to fertilize in the fall will strengthen your plants’ and lawn’s roots, giving them a strong base on which to thrive next spring,” he pointed out. He recommends a formula of 20-8-8 (nitrogen-phosphorus-potassium) for the best blade, foliage and root growth and trace element absorption. Check with your local Master Gardeners for the ideal time for lawn fertilization. Roger also suggests fertilizing shrubs and trees in the fall. “I recommend applying one to three

AUTO • HOME • FARM & RANCH • COMMERCIAL



Weldon “Wally” Wallace
Agent

817-341-7766



“With Wallace Insurance, It’s Not Just Business ...
WE Make it Personal.”

117 N. MAIN ST. • WEATHERFORD

TAG

Benefits Group

At TAG, YOU'RE it!



Becky Tenseth
817-613-0048

- Employee Benefits
- Consulting
- Communication
- Life & Health

Concerned about how Health Care Reform will affect you? Call us.



BIG BURGER
HALF PRICE
BURGER or Sandwich

Buy One Burger or Sandwich at Reg. Price, Get Second One of Equal or Lesser Value Half Price. Valid only with coupon. Not Valid with any other offer.
EXP. 11/30/14

817.594.2785 **www.BIGBURGERTX.COM**

3322 Fort Worth Hwy, Hudson Oaks, TX (Across from Jerry's Hyundai)

NOT ALL BACKYARD BATTLES ARE IMAGINARY



YARD ARMOUR protects your home and lawn from fleas, ants and other pests.

- Fertilization & Weed Control
- Disease/Insect Control
- Core aeration
- Grub Control



Lawn Doctor of Weatherford-Stephenville
Locally owned and operated
817.243.4948 | 1.800.LAWN DOCTOR **LawnDoctor.com**

CLASS 3 SALES AND SERVICE

TACTICAL AND CLASSICAL GUNSMITHING

SHOOTIST ARMS COMPANY



**CONCEALED
HAND GUN
CLASSES
AVAILABLE**

General and Custom Gunsmithing

NFA Class 3 Sales and Service • Suppressors

Investment Grade Firearms • Historical Restorations

Cowboy Action Shooting

Heirloom and Estate Firearms

Sales • Consignments • Appraisals • Transfers

Law Enforcement Certified Armorer

35 Years Experience

Fully Licensed and Insured



1872 Mineral Wells Hwy #101, Weatherford, Texas 76088
817-599-6767 www.shootistarmscompany.com



pounds of slow-release nitrogen per 1,000 square feet of bed and cultivating lightly," he shared.

Pruning

While fall pruning isn't advocated by most professionals, there are some basics to remember and apply to the task when trimming is safer for the plants. Mike McGrath expounded on why it's advisable not to prune until winter. "As I try to stress every year at this time, pruning now stimulates new growth just when the plants are trying to go dormant, and this severely weakens the plants."

Once winter has arrived, pruning is recommended to promote overall plant health, encourage flower and fruit development, control size and eliminate broken, hazardous branches. For large, established trees, pruning is best left to qualified professionals. A number of knowledgeable, reputable tree trimming services provide care programs and fertilization. Some employ certified arborists to assist clients and offer tree trimming along with traditional lawn and garden packages.

Among shrubs to prune in winter are hydrangeas and camellias. Trees to be pruned at the same time include: juniper, spruce, Bradford pear, honey locust and poplar. Trees *not* to prune in winter are maple, birch, dogwood, walnut and elm.

Whether raking and mulching or planting and fertilizing, remember to pace yourself. As Barbara Pleasant wrote in *Compost Gardening*, "Leaf season will last for several weeks, so you have plenty of time to let yourself enjoy the weather and the work!" **NOW**



Your Freedom Starts with a License

**\$15
OFF**

**WHEN
SIGNING
UP WITH
A FRIEND!**

Quality Driver's Ed

817-789-1973

www.maverickdrivingacademy.com

5189 E. I-20 Service Rd. Suite 101C • Willow Park, TX

Nails Spa

NOW OPEN SUNDAY

LOTS OF HOT DEALS IN OCTOBER!

Come see what we have!

Solar Nails (pink/white) ONLY \$35 WITH THIS COUPON

Does not apply to Solar Nail Fills. Not valid with any other offer. Expires 10/31/14

\$5.00 OFF

Any Service \$38 or More

Does not apply to Solar Nail Fills. Not valid with any other offer. Expires 10/31/14

Complete & Professional Nail Care and Waxing for Women & Men

817.594.5225

112 College Park Dr. • Weatherford, TX 76086
Near Super Save Grocery

Walk-in or by appointment
Student discounts with ID
Gift certificates available

Mon-Fri 10am-7pm
Sat 9am-6pm
Sun 12-5pm

facebook.com/nailsspawf

MasterCard VISA DISCOVER

gelish
SOAK-OFF GEL POLISH

THIRD ANNUAL

HOMETOWN HERITAGE



STAMPEDE

HISTORIC DOWNTOWN WEATHERFORD

LIVE ENTERTAINMENT AND SHOPPING



FREE TO PUBLIC



SATURDAY, OCTOBER 11 10:00 A.M. - 4:00 P.M.

SPONSORED BY

ROGER WILLIAMS

AUTOMALL
WEATHERFORD, TX



Jeep



FOR MORE INFORMATION

(817) 598-4034 OR

BREXROAT@WEATHERFORDTX.GOV

WEATHERFORDTX.GOV/STAMPEDE

FIND US ON

[facebook.com/WPARD](https://www.facebook.com/WPARD)



FOLLOW US ON

[@wparksandree](https://twitter.com/wparksandree)



Clayton
homes



SUMMER SLAM
Special Financing

THE BREEZE

\$39,900, Only 5 Left

*The Breeze has
blown in* **REDUCED
DOWN PAYMENTS!***

Special financing is available only for The Breeze Home

Se Habla Español

817-237-6706

9900 Jacksboro Hwy. • Ft. Worth, TX. 76135
claytonhomesftworth.com

*Call for Details RB134240 (w.a.c.) We work with all Insurance Companies.

BRAZOS EXTERIORS

Quality Rock & Cedar Construction

Serving Parker, Hood, Johnson & Tarrant Counties.

- PATIO COVERS
- DECKS
- FIRE PITs
- ROCK PATIOS
- PERGOLAS



FREE
Estimates.
Call Today!

Jay
817-243-2652

Dayson
682-229-4404

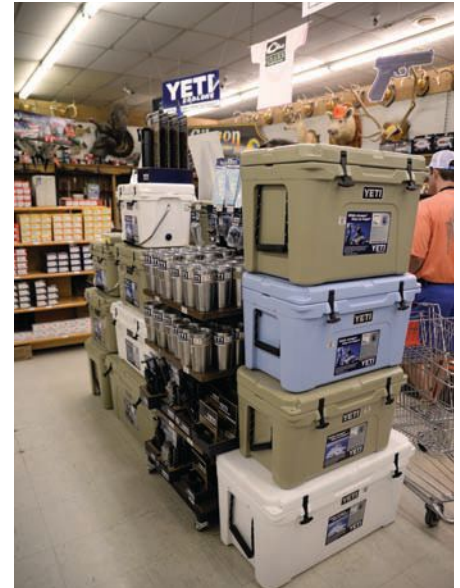


Gibson's Discount Center

411 S. Main St.
Weatherford, TX 76086
Phone: (817) 594-8711
Cell: (817) 597-5242
www.gibsonsace.com
gibsonsace@aol.com

Hours:

Monday-Saturday: 8:00 a.m.-8:00 p.m.
Sunday: 9:00 a.m.-6:00 p.m.
Closed Thanksgiving Day and Christmas Day



Gibson's Discount Center in Weatherford offers a variety of items from guns and ammunition to groceries and greeting cards.

GUNS, GARDEN AND MORE!

Customers can find just what they're looking for at Gibson's Discount Center in Weatherford.

— By Amber D. Browne

Variety is said to be the spice of life. And, at Gibson's Discount Store in Weatherford, you will find a variety of items for everyday living. Need a new pair of cowboy or work boots? Gibson's has them. Need a greeting card and toy for a child's birthday? Gibson's has those, too. How about a firearm and ammunition for the upcoming hunting season? Gibson's on Main Street offers a wide selection of firearms and ammo at competitive prices.

"We have really good customer service. If you don't know guns, we try to train you. No question is stupid," shared Brandon Seidler, sporting goods department manager.

Gibson's buys, sells and trades guns, and the store often runs sales on its firearms. Brandon can special order a firearm, if it's not on the shelf. "If it's available, normally I will get it for you within 24 hours." Gibson's carries every brand of firearm, and although customer traffic may increase during hunting seasons, the sporting goods section is busy year-round.

The sporting goods section features other items like bows, YETI coolers and fishing gear. In lawn and garden, customers will find decorative yard art, wind chimes, plants, trees and sod. If you're in the mood to redecorate a room in your home, Gibson's has what you need for that, too. The store

offers Ace Hardware paints and other housewares items. Customers can find clothing, shoes and jewelry, as well as crafts and fabric. "We have people who drive from 100 miles away for the fabric section," Brandon said. The store also includes an automotive department and a small grocery section. "We have a little bit of everything at discount prices." Customers have been known to say if they are unable to find an item elsewhere, they can find it at Gibson's.

Gibson's Discount Centers were once popping up across the country. But now, the location in Weatherford is one of a few remaining stores. The Weatherford location is a family-owned business. The history of the Seidler and Holladay families' involvement with Gibson's in Weatherford stretches back decades. While working as a receiving man's helper at the previous location on Fort Worth Highway, Tommy Holladay had the chance to buy the store. The owner at that time decided to sell when another retailer moved into town, so in 1986, Tommy and Jerry Durant purchased the store. Tommy and his two children later bought Jerry's portion of the business, and so began the family-owned venture.

Many family members now work at the store. "I think it's unbelievable how well our family gets along," Tommy said. "They are very competitive, and they want to be good. I just think there's lots of love in the family. We pretty well fit together," Tommy said.

At Gibson's, the owners and staff treat their customers like family. "It's my favorite store. I don't even live in Weatherford anymore, but if I come to Weatherford, I have to come to Gibson's," remarked longtime customer Bryan Crowder. "They have a knowledgeable sales staff. It just has that small-town feel to it. That's something you don't find anymore."

"The reason I think we're successful is because we're together. We're laughing, and we care for each other. And, everyone really cares about the store," Tommy shared. "It's a close family, and I think that makes us successful. The Lord has really blessed us." **NOW**

LARGE SELECTION OF NEW AND USED GUNS AVAILABLE



Drive LT • 336 FPS
Ready to Shoot in Skull Works Pattern
70 lbs. pull adjustable down to 50 lbs.

\$599.99



Fever 1 • 312 FPS
Ready to Shoot in Skull Works Pattern
60 lbs. pull adjustable down to 40 lbs.

\$399.99



Stalker Recurve Bow
Right Hand • 60 lbs. Pull

\$149.99



Surge • 320 FPS
Ready to Shoot in Infinit Pattern
70 lbs. pull adjustable down to 50 lbs.

\$499.99



Tidal Wave • 30 lbs. to 40 lbs. Pull
Ready to Shoot in Reaper Pattern
With 2 Arrows Reel & Rest & No Gloves

\$379.99



**T-hanger 400 lb. capacity
Deer Feeder**

\$599.99

Deer Corn \$7.99 per 50 lb. bag



**Holiday Season
30 oz.**

YETI Rambler

\$29.99



**Winchester Tradition
19 Gun Safe**

\$709.99

Gibson's
Sporting Goods

411 S. Main • Weatherford, TX

817-594-8711

Mon-Sat 8am-8pm • Sun 9am-6pm

*While supplies last. Prices good through 10/31/14.



Aledo ISD students, Alyssa Oestreich and Kaleb Oestreich, place in their races at the TAAF Region 4 Championship Swim Meet.



Erin Miller and her daughter, Kadence, shop for groceries at Brookshire's.



Julie Lundy has a blast with the Renegades at Lone Star Guns, Gallery & Gear.



Brad and Cresha Humphries get ready to close up shop for the night at Lazy J Ranch Wear.



Instructor Loretta Benham leads the Yoga in the Garden class at Chandor Gardens.



Chelsi Rogers, Chris Sarchet, Ashley Sims and Paul Sims help raise funds at a golf tournament to benefit Team Coblson.



Leila Bruce gets pampered by Tina Nguyen at Nails Spa.



Paul and Melissa Thurman grab a bite at Chicken Express.

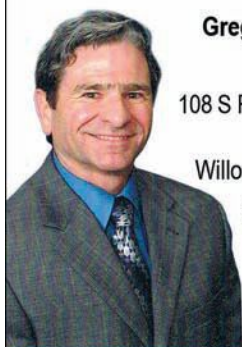


Roy Patterson spends the afternoon running errands in Weatherford.



Weatherford ISD staff participate in the ALS Ice Bucket Challenge at the district's 2014 Convocation and Vendor Fair.

Investing: Self-service is no service.



Gregg Davis, AAMS®
Financial Advisor

108 S Ranch House Road
Ste. 300
Willow Park, TX 76008
817-441-6612

www.edwardjones.com
Member SIPC

Edward Jones®
MAKING SENSE OF INVESTING



The Yorkie Town Suites
Fuzzy Feet Pet Hotel

**Boarding, Grooming
and Puppies too!**

Pet Aesthetician:
Giving the Ultimate Spa
Treatments
for Dry Itchy Skin
...
Luxurious Accommodations
for Pet Boarding

Call for Appointment
Weatherford TX

817-565-3525

www.yorkietownsuites.com



Owners
Jan & Gary Montgomery

Windy Hill Farm Cheesecakes



Cupcakes • Birthday
Wedding • Truffles
Chocolates Homemade
Caramel • Pies & Cookies

20% Off

All October Orders

Cannot be combined with
any other discounts
Offer Expires 10/31/14

**Order
Today!**

(817) 565-0585

ARBORS • OUTDOOR KITCHENS • PATIOS

Your Oasis Awaits...



Call today for
FREE
Consultation



URBANOASIS

OUTDOOR LIVING & LANDSCAPING

817.453.3100

WWW.URBANOASISOUTDOOR.COM

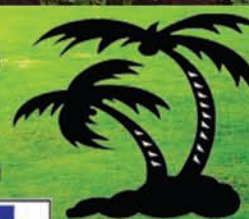
PayPal

DISCOVER

MasterCard

VISA

AMERICAN EXPRESS



L19335

LANDSCAPING • SPRINKLERS • LIGHTING

Reasons to Consolidate Your Retirement Accounts

The average U.S. worker will hold up to 11 jobs between the ages of 18 and 44, according to the Bureau of Labor Statistics. Some of those past jobs probably came with a 401(k) or an IRA account as a perk. According to a recent study, more than 50 percent of American workers have two or more retirement accounts to keep track of.

Why consolidate your accounts?

Say you have \$3,000 sitting in one retirement savings account, \$4,000 in another and \$2,000 in a third. They may be costing you money, because most funds charge annual fees for accounts containing less than \$5,000. And once you reach age 70 1/2, you will have to start taking money out of those accounts. Who wants to keep track of all that IRS paperwork?

Is there a better option?

The answer is yes. You can consolidate your IRAs and 401(k)s into a single rollover IRA. Doing so would accomplish several worthwhile investment goals, including:

- Receiving just one monthly statement
- Keeping track of less paperwork
- Having more investment control
- Increasing fund leverage
- Saving money on account fees

How difficult is it to consolidate?

Consolidation is simple and easy. For many, IRA rollovers are a simple, safe and secure way to consolidate your retirement assets. And the fund consolidation

trend is growing. Some estimates say that more than \$370 billion annually will be rolled into IRAs from 401(k)s over the next few years.

What are some other advantages?

Rolling over your funds into a new IRA can expand your retirement portfolio options. For example, some employer 401(k)s only offer limited investment choices, but with a rollover IRA, you can tailor your investments to meet your precise retirement goals. There are also more flexible distribution provisions with a rollover IRA.

How do I get started?

To set up a rollover IRA, consult a financial professional. In some cases, your advisor will even help you fill out the paperwork to close the other accounts. Keep in mind that some funds charge fees for closing an account.

Are there any disadvantages to consolidating?

Yes. You can borrow from a 401(k) account, but not from an IRA. You can withdraw funds without a 10-percent early withdrawal penalty from a 401(k) if you leave your employer at age 55 or older, but with an IRA you have to wait until you are age 59 1/2.

With any investment opportunity, it is important to do your homework. Seeking the advice of an investment professional before making any changes to your retirement accounts is advisable. Find out for yourself whether the risks outweigh the benefits. **NOW**

Article provided by The Mader Bagley State Farm Agency.

Fun Fall Fashion

RENDY ROLY boutique

817-594-2380
1713 Bethel Rd.
Weatherford

Eagle Mountain Auto Salvage, Inc.

Over 2500 Cars Full of Parts.
All Parts Guaranteed.
WE BUY CARS & TRUCKS!

817-237-3350

9901 Jacksboro Hwy.
Fort Worth, 76135
eaglemountainsalvage.com

BIOLOGY

PREPARING FOR COLLEGE MEANS TAKING THE TOUGH CLASSES NOW!

FIND OUT WHICH CLASSES YOUR STUDENT NEEDS TO TAKE AT KnowHow2Go.org

AE Ad LUMINA



SANTA FE
SPORTS BAR & GRILL

1802 SANTA FE DR.
WEATHERFORD, TX
HOURS 10:30 - 12:00 AM

817-598-9025

MON. - FRI. 10:30 TILL 4 PM

*21" TV's with Your
Favorite Sport On
All The Time*

**FREE
APPETIZER
WITH ANY ENTRÉE**

Pediatric Rehab

Providing quality therapy services for children

1836 Santa Fe Dr., Weatherford, TX
817-341-7611

3550 Hulen St. - Ste. D, Fort Worth, TX
817-377-2535

300 S. Morgan, Granbury, TX
682-205-3340

WWW.PEDI-REHAB.COM

PROVIDING:

Interactive Metronome Therapy • Speak-EZ for Apraxia
Picture Exchange Communication-PEC
Handwriting Without Tears • Sensory-based Treatment




Accept Medicaid and Commercial Insurance
Call for more information.

**Occupational Therapy
Physical Therapy
Speech-Language Therapy**

**NOW HIRING
THERAPISTS**

Participants Wanted for Yard Sale

**Saturday, October 25, 2014
9 a.m. - 3 p.m.**

On the grounds of St. Francis Church
117 Ranch House Road
Willow Park, 76087

Sponsored by
Gardener's Club of Parker County
\$20 for 15'x15' space
Call 817-919-6280 for info.

MOP HEADS

Cleaning Services

"Let Our Family Help Your Family"

Carpet cleaning
Commercial
Residential
Apartments

817-692-1031




**Brandon Waters
Owner**

KINGWAY AUTOMOTIVE

REPAIR AND MAINTENANCE

**FREE
Honesty**

(included in every service and quote)
No need to bring in this coupon
to receive this deal

**FREE
Integrity**

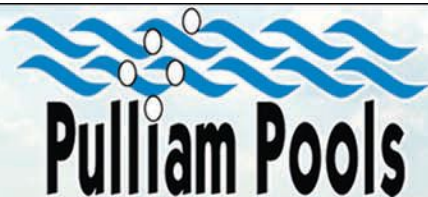
(included when we stand behind our work)
No need to bring in this coupon
to receive this deal



- ENGINES ■ TRANSMISSIONS ■ BRAKES
- SHOCKS ■ STRUTS ■ EMISSIONS
- CHECK ENGINE LIGHT DIAGNOSTICS
- OIL CHANGES ■ TUNE-UPS

817-598-1071 • 922 A. FT. WORTH HWY., WEATHERFORD

Ft Worth Hwy just East of the Court House at the Jack Borden light



**Pulliam Pools would be honored to build
your outdoor stay-ca-tion destination!**

Innovative Pools Built on Experience Since 1916 • 98 Years Strong!



- New Pool Construction
- Renovations
- Outdoor Kitchens
- Fire Pits/Fireplaces
- Dedicated Service Team

817-613-1910
3292 Fort Worth Hwy.
Hudson Oaks, TX
www.pulliam.com

Ranked Top 7 Pool Builder in the Nation in 2013 by *Pool & Spa News Magazine*
Ranked Number 1 in Philanthropy in 2012 by *Pool & Spa News Magazine*
Member of United Aqua Group - Aquatech Society of Pool Builders
Awarded 2014 Talk of the Town Award for Customer Service (for the 3rd consecutive year)
Awarded 2013 Best of Fort Worth Award in Pools Category
Ranked Number 1 in Customer Service in 2013 by *Pool & Spa News*



Weatherford Access Center offers no-cost, no-obligation assessment to identify the most appropriate care for people struggling with:

- Mental Health issues, including thoughts of harming self/others
- Behavioral Health issues, for geriatrics, adults, adolescents or children
- Chemical Dependency issues, drug & alcohol detox with on-going counseling to stay sober

One call can make the difference in the life of you or someone you love.
(817) 374-7911

*Believing That Love Makes
the Healing Difference*

*Nursing • Therapy • Social Workers
Home Health Aides*

Joint Commission Accredited

109 Larson Rd. Suite 100 • Aledo, TX
817.441.2747
BeyondFaithHomeCare.com

*Book Us For A Fall Party or Wedding
Events • Weddings • Parties*

Shirley Clark • 817-901-4747
www.PhotoLobbyPhotoBooths.com
email: info@PhotoLobbyPhotoBooths.com

PET GROOMING & BOARDING
817.594.4196
Over 20 Years Experience
1222 B. Fort Worth Hwy • Weatherford

**\$5.00 Off
Any Groom**

Expires 10/31/14

October 4

Fall Festival at Clark Gardens:
11:00 a.m.-3:00 p.m., Clark Gardens, 567
Maddux Rd. Call (940) 682-4856 or visit
www.clarkgardens.org for more information.

Parker Paws 3rd Annual DOGtoberfest:
Noon-4:00 p.m., Fish Creek Restaurant and
Oak Ridge Church of Christ, 4899 I-20
Service Rd., Willow Park. Enjoy a doggie
costume contest and wiener dog races. Visit
www.parkerpaws.org for more.

October 10

9th Annual Pink Luncheon:
11:30 a.m.-1:00 p.m., New River Fellowship,
3252 Interstate 20 Frontage Rd., Hudson
Oaks. Visit www.pinkluncheon.com for more.

October 11

3rd Annual Hometown Heritage Stampede
Festival: 10:00 a.m.-4:00 p.m., historic
downtown Weatherford. This family-friendly
event celebrates Weatherford's western
heritage. Visit www.weatherfordtx.gov/stampede
to find out more.

6th Annual Kangaroo Craft Sale & Expo:
10:00 a.m.-4:00 p.m., Weatherford High
School Gymnasium, 2121 Bethel Rd. Call
(817) 598-2858 to find out more.

October 14

94th Annual Weatherford Chamber Banquet:
7:00-9:00 p.m., Parker County Sheriff's Posse,
2251 Mineral Wells Hwy. Call (817) 596-3801
for more.

October 16

Weatherford High School Homecoming
Parade: 5:30-7:00 p.m., Ninth Grade Center,
1007 S. Main St. Call (817) 598-2956 to find
out more.

October 17

Weatherford High School Homecoming
Football Game: 7:30-10:30 p.m., Kangaroo
Stadium, 1007 S. Main St. Call (817) 598-2956
for ticket information.

October 18

2014 Talking Tombstone Tour: 1:00-3:00 p.m.,
Old City Greenwood Cemetery, 300 Front St.
Visit www.parkercountyheritagesociety.com
for more.

October 19

Autumn Art Walk at Chandor Gardens:
Noon-4:00 p.m., Chandor Gardens, 711 West
Lee Ave. Visit www.chandorgardens.com
for more information.

October 25

Garage Sale: 9:00 a.m.-3:00 p.m., St. Francis
Church, 117 Ranch House Rd., Willow Park.
The garage sale sponsored by Gardeners'
Club of Parker County will feature a variety
of items. Call (817) 919-6280 for more
information.

October 26

Goblins in the Garden: noon-4:00 p.m.,
Chandor Gardens, 711 West Lee Ave. It's
a fun experience for the entire family. Visit
www.chandorgardens.com for more.

October 30

Bag Lady Luncheon: 11:00 a.m.-1:00 p.m.,
Parker County Sheriff's Posse, 2251 Mineral
Wells Hwy. The auction and luncheon benefits
the Parker County Senior Center and the
Meals-on-Wheels Program. Purchase tickets at
(817) 596-4640.

November 1

Art Show and Sale: 5:00-9:00 p.m., Mader
Bagley State Farm Building, 1916 Martin Dr.
Call (817) 599-3278 for more information.

*Submissions are welcome and published as
space allows. Send your event details to
amber.browne@nowmagazines.com.*

Ride with the #1 car insurer in Texas

With competitive rates and
personal service, it's no wonder
drivers trust State Farm.®

Like a good, neighbor
State Farm is there.®

CALL FOR A QUOTE 24/7

State Farm®

Mader-Bagley Agency
www.mader-bagley.com

1916 Martin Drive, Weatherford, TX 76086-6701
(817) 594-0241 - (817) 596-0241 - Toll Free: (800) 861-3579

HOME, AUTO, LIFE & HEALTH INSURANCE



Customer service
comes first.
Our bilingual team
is here for you.



In the Kitchen With Michelle Gibbons

— By Amber D. Browne

At a young age, Michelle Gibbons found inspiration in the kitchen from her father, Michael Gibbons. “I have fond memories of trying new things as a child, which is where my growing love for food began,” Michelle shared.

Michelle has worked in bakeries for 12 years. “I love to decorate and see the faces of the children or the brides-to-be when they see their cakes.” She dreams of appearing on her favorite television show, *Master Chef*, and opening a restaurant or food truck. Until then, Michelle will share her love of cooking with her children, including her daughter, Autumn. “I look forward to teaching her more as she grows, along with her three little brothers. My children love to eat, and I so enjoy seeing them clean their plates.” **NOW**

Beef Stroganoff

- 1 Tbsp. garlic powder
- 2 lbs. round steak, fat trimmed and thinly sliced
- 1 Tbsp. paprika
- 1 tsp. salt
- 1/2 tsp. pepper
- 3-4 Tbsp. flour
- 2 Tbsp. vegetable oil
- 2 medium onions, diced
- 1 Tbsp. minced garlic
- 1 10.5-oz. can Campbell's beef consommé
- 1/4 cup water
- 1 lb. mushrooms, thinly sliced
- 8 oz. sour cream
- 1 pkg. wide egg noodles, cooked

1. Sprinkle garlic powder on each side of steaks and layer them in a bowl. Refrigerate 2 hours.
2. Combine next 4 ingredients in a 1-gallon

Ziploc or plastic bag. Remove steaks from refrigerator and bring to room temperature. Add meat to bag and shake well.

3. Heat oil on medium-high in a large pan. Add meat, onions and garlic. Stir occasionally until onions are translucent.

4. Add consommé, water and mushrooms. Stir together; bring to a boil. Cover; simmer on medium-low, stirring about every 5 minutes for 1-2 hours. When meat is fully cooked, stir in sour cream. Serve over egg noodles with garlic toast.

Chicken Alfredo

- 1 lb. boneless, skinless chicken breast or tenders
- Water, enough to cover chicken
- 2 Tbsp. butter or olive oil
- 1 medium onion, minced
- 1-2 small cloves garlic, minced
- 1 Tbsp. each onion and garlic powder
- 1 tsp. each salt and pepper

- 1 to 2 16-oz. jars of Alfredo sauce
- 1/2 cup Parmesan cheese
- 1 lb. fettuccini noodles, cooked

1. Boil chicken in water for 30 minutes, or until chicken is done. Remove from water; cool on a plate. Once cooled, shred chicken.
2. Place butter or oil in a large frying pan. Add onion, garlic and seasonings. Sauté over low to medium heat until onions are translucent.
3. Stir in Alfredo sauce and cheese. Slowly add chicken and stir. Cook over low to medium heat until thoroughly heated. Serve over noodles with salad and garlic bread.

Guacamole

- 2 large or 4 small avocados, peeled, pitted and chopped
- 1 medium onion, diced
- 2 medium tomatoes, diced
- 2 small jalapeños, seeded and finely diced
- 2 tsp. garlic powder
- 2 tsp. onion powder
- 2 Tbsp. salsa
- Salt and pepper, to taste
- 1/8 cup sour cream

1. Mix first 8 ingredients thoroughly, smashing avocados with fork. Add sour cream. Chill for 30-60 minutes before serving.

Corn Casserole

- 1 15.25-oz. can cream-style corn
- 1 15.25-oz. can whole kernel corn
- 6 oz. sour cream
- 2 eggs
- 1 box Jiffy Corn Muffin Mix
- Salt and pepper, to taste
- Grated cheese (optional)
- 1 stick butter or margarine, melted

1. Preheat oven to 350 F. Coat an 8x8-inch casserole dish with cooking spray.
2. Mix all ingredients and pour into dish. Cover with foil and bake for 1 hour. Uncover and bake another 15-20 minutes, or until golden brown.

To view recipes from current and previous issues, visit www.nowmagazines.com.

Vision.

**We're here to help you
see things more clearly.**

You want your eyes to be healthy, and your vision as clear as it can be. We want that for you, too. So at Weatherford Regional Medical Center, we provide bladeless, laser-assisted cataract surgery and the benefits of its remarkable precision. We also offer services ranging from comprehensive eye exams to treatment for glaucoma, dry eye, diabetes-related eye conditions, macular degeneration, eyelid problems and more. **For information, call 682-582-1172 today.**



**Weatherford
Regional Medical Center**



Brilliant!
Medical Bou+ique

Fighting Breast Cancer Together

Kyle Mittendorf, Zan Prince, Joyce Mittendorf, Evon Markum, Amy Kramer, Debbie Rowe and Leslie Goeldner.
Jamie & Allie Mittendorf and Diane Johnson.

Your post mastectomy boutique

- * Mastectomy bras
- * Breast forms
- * Lymphedema sleeves
- * Wigs, scarves & hats

925 Santa Fe Drive, Suite 100
Weatherford, TX 76086
817-594-5833

1630 W. Randol Mill Road
Arlington, TX 76012
817-804-0611

First National Bank
220 Palo Pinto Street 139 College Park Drive

817-598-4900

www.fnbweatherford.com

