

# Weatherford

Aledo | Hudson Oaks | Willow Park

M A G A Z I N E

JULY 2015

# NOW

## Gardening for Monarchs

Safe and effective plant knowledge attracts beauty

## Dream Come True

At Home With Will and Lili Turnbow

Peach  
Festival Guide  
-and-  
Dining Deals  
Inside!

Variety of Form  
Revamping the Kid's Room

Fill It With Hope

In the Kitchen  
With Sadie deMoville



# If Nurture is in Your Nature, Let's Talk... ...ABOUT BECOMING A FOSTER PARENT!



For more information please contact  
[www.thefosteringcommunity.org](http://www.thefosteringcommunity.org)  
or call 1-844-644-9240

  
**our community. our kids.**  
a division of ACH Child and Family Services

COME AND VISIT US AT  
**Parker County Peach Festival**  
Saturday, July 11 • 8:00 am – 5:00 pm • Children's Train Ride Station





Are you a candidate for  
natural hormone balancing?



Natural Hormone Pellet Therapy  
with BioTe will increase:

Energy

Lean Muscle & Bone Mass

Libido

Ability to Get in Shape

Mental Clarity & Focus

- Medical Weight-loss Programs
- Dermapen with PRP
- Dysport
- Botox Cosmetic
- Facial Fillers
- Laser and Radiofrequency Skin Rejuvenation
- Facial Cosmetic Surgery
- Jane Iredale Cosmetics
- Esthetician Services

• *Gift Certificates Available* •

MONTHLY SPECIALS FOR JULY

All Skincare Products  
**20% OFF**

Obagi - ZO by ZEIN OBAGI  
TNS by SKIN MEDICA  
INNOVATIVE SKINCARE • ALL SUNSCREENS

Dr. Bruce N. Epker DDS, MSD, PhD,  
Board Certified

Dr. Meagan Hill, MD



**Facial Cosmetic & Surgical Center**

1020 Ft. Worth Hwy., Ste 800 | Weatherford  
817-596-7666 | [www.BestFaceForYou.com](http://www.BestFaceForYou.com)



# SEE WHAT YOU'VE BEEN MISSING®



GEMTECH®

**Gemtech Quicksand 7.62mm Titanium Suppressor**  
\$1,199.95

GEMQUICKSAND



**MTM Tactical AR-15 Magazine Can Plastic**  
\$21.95

MTMTMC15



TROY

**Troy GPS NAV Butt Stock**  
\$324.95

TROSGPSNAV00T00



ZEV

**ZEV Technologies Glock 17 Barrel**  
\$218.95

ZEV8BL170



BADGER ORDNANCE

**Badger Ordnance Universal Charging Handle**  
\$99.95

BAD24838



FrogLube

**FrogLube CLP Liquid**  
\$17.95

GGG1590



ThermaCELL

**ThermaCELL Mosquito Repellent with Earth Scent Refill**  
\$18.95

E4



**Borka Tools MG17 Multi Torque Driver Kit**  
\$154.95

BORMG17



HOPPE'S

**Hoppe's #9 Air Freshener**  
\$3.49

HOPH9AF



LANSKY

**Lansky Deluxe 4-Stone System**  
\$64.95

LANLKDM



Hornady

**Hornady Security Rapid Safe**  
\$187.46

HOR98150



**ELF 3-Gun Straight Trigger**  
\$269.00

ELFT3GUNS



TANNERITE

**Tannerite Exploding Rifle Target ProPak**  
\$54.95

TANPP10



LOCK

**Glock Entrenching Tool with Pouch**  
\$44.95

GLOET17170



BIRCHWOOD CASEY

**Birchwood Casey Presto Gun Blue Touch-Up Pen**  
\$4.95

BIR13201



ThermaCELL

**ThermaCELL Olive Appliance**  
\$21.95

MKGJ

**OVER 1,000 DIFFERENT TYPES OF AMMUNITION,  
TOTALING OVER 1 MILLION ROUNDS IN STOCK**

VISIT OUR NEW  
RETAIL LOCATION!  
**NOW OPEN**  
5840 E. US HWY 287  
MIDLOTHIAN, TX 76065



ORDER NOW AT SWFA.COM  
**1.972.SCOPE IT**  
(1.972.726.7348)



Publisher, Connie Poirier

General Manager, Rick Hensley

## EDITORIAL

Managing Editor, Becky Walker

Weatherford Editor, Amber D. Browne

Editorial Coordinator, Sandra Strong

Editorial Assistant, Rachel Smith

Writers, Gregg Davis . Sara Edgell

Erin McEndree . Betty Tryon

Editors/Proofreaders, Pat Anthony

## GRAPHICS AND DESIGN

Creative Director, Chris McCalla

Artists, Kristin Bato . Julie Carpenter

Morgan Christensen . Martha Macias

Brande Morgan . Shannon Pfaff

Felipe Ruiz

## PHOTOGRAPHY

Photography Director, Jill Rose

Photographer, Sarah McVean

## ADVERTISING

Advertising Representatives,

Cleta Nicholson . Steve Randle

Teresa Banks . Linda Dean-Miley

Mark Fox . Bryan Frye . Melissa McCoy

Lisa Miller . Carolyn Mixon

Lori O'Connell . John Powell

Linda Roberson . Joyce Sebesta

Shelby Veldman

Billing Manager, Angela Mixon

## ON THE COVER



*Preserving the Monarch butterfly has become a goal of the Parker County Master Gardeners.*

# CONTENTS

July 2015 • Volume 5, Issue 7



## 8 Gardening for Monarchs

Learning a new skill can become a lifelong love.

## 14 Dream Come True

At Home With Will and Lili Turnbow.

## 20 Variety of Form

From murals, wood carvings and more, John Stout is an inventor of colorful designs.

## 30 Revamping the Kid's Room

Bond with your child while helping them personalize their own space.



42 BusinessNOW

44 AroundTownNOW

46 FinanceNOW

52 CookingNOW

*WeatherfordNOW* is a NOW Magazines, L.L.C. publication. Copyright © 2015. All rights reserved. *WeatherfordNOW* is published monthly and individually mailed free of charge to homes and businesses in the Weatherford and Aledo ZIP codes.

Subscriptions are available at the rate of \$35 per year or \$3.50 per issue. Subscriptions should be sent to: NOW Magazines, P.O. Box 1071, Waxahachie, TX 75168. For advertising rates or editorial correspondence, call (817) 613-1533 or visit [www.nowmagazines.com](http://www.nowmagazines.com).





## Editor's Note

Hello there, *WeatherfordNOW* Readers!

I want to begin by saying "thank you" to those who emailed or called with article suggestions for *WeatherfordNOW*. We have a myriad of remarkable residents whose stories I would love to share, and with community members like you, our readers are learning more about their neighbors. If you know someone who

may want to share a few recipes, open their homes for a sneak peek inside or humbly express their contributions to the community, feel free to drop me a line.

Speaking of line, why not cast your fishing rod at Lake Weatherford? According to the Texas Parks and Wildlife Department, the nearly 1,200-acre lake is home to a variety of fish, including: largemouth bass, sunfish, crappie and channel catfish. While there, be sure to stop by the Lake Weatherford Marina for some fare on the patio.

Have fun!

*Amber*

Amber D. Browne  
*WeatherfordNOW* Editor  
amber.browne@nowmagazines.com

**KEEP CAMPING WITH**  
**BENNETT'S**  
CAMPING CENTER

**NOT READY TO BUY?  
WE HAVE RENTALS!**

**This SUMMER  
GO SEE  
America the BEAUTIFUL**

**Get OUTDOORS &  
make some MEMORIES!**

**SOMETHING FOR EVERY  
BUDGET & EVERY TOW VEHICLE  
NEW & USED TRAVEL TRAILERS  
& 5TH WHEELS**

**SALES | RENTALS | SERVICE  
CAMPGROUND**

817-573-3665 | 817-279-7500  
bennettsrv.com | 2708 E. Hwy. 377, Granbury | Mon-Sat

*Please Welcome*

**Dr. Jaebum (JB) Lee, DDS, MSD, PhD**  
New Periodontist in Weatherford

■ *Diplomate of the American Board of Periodontology*  
■ *Diplomate of International Congress of Oral Implantologists (ICOI)*  
■ *Adjunct Associate Professor at Georgia Regents University*

- |                     |                            |
|---------------------|----------------------------|
| ■ Implant Placement | ■ Same Day Implant         |
| ■ Laser Therapy     | ■ Soft Tissue & Bone Graft |
| ■ Gum Disease       | ■ Gum Plastic Surgery      |
| ■ Extraction        | ■ Gummy Smile              |

**The Dental Implant Place**  
In Parker County

**CALL TODAY**  
**(817) 598-1900**



Located in same office as Shelby Dental • 2035 FT Worth Hwy, STE 500, Weatherford, Texas 76086





# LUNG & SLEEP SPECIALISTS OF NORTH TEXAS

## CELEBRATE THE 4TH OF JULY

**Olusegun A. Oseni, MD, FCCP, DABSM**

Board Certified in Internal Medicine, Pulmonary, Critical Care and Sleep Medicine  
Independent Member of the Medical Staff at Weatherford Regional Medical Center

**817-594-9993**

945 HILLTOP DRIVE, SUITE 101  
WEATHERFORD, TEXAS 76086



[www.lungandsleepspecialists.com](http://www.lungandsleepspecialists.com)

## Pulmonary Services

*We specialize in the diagnosis and management of various pulmonary conditions*

- Asthma • COPD • Emphysema
- Chronic Bronchitis • Chronic Cough
- Acute and Chronic Respiratory Failure
- Lung Cancer • Pulmonary Fibrosis
- Sarcoidosis • Occupational Lung Disease
- Pleural Diseases • Pulmonary HTN
- Obesity with Lung Restriction
- Asbestosis
- Silicosis
- Black Lung Disease



## The Sleep Center

*We specialize in effectively diagnosing and managing sleep disorders*

- Sleep apnea both obstructive and central sleep apnea
- Insomnia
- Narcolepsy
- Restless Leg Syndrome
- REM Sleep behavioral disorders
- Sleep walking
- Sleep disorders associated with depression, post menopause and geriatric age
- Shift work sleep disorders



**Dr. Deborah Romack & Dr. Garrett Mulkey**

**HAPPY 4TH OF JULY**

We pride ourselves on providing our patients with care using a combination of the latest technology along with proven techniques provided in a gentle and caring manner.

- Veneers, bonding, whitening
- Child/adolescent/adult orthodontics/Invisalign
- Dental care for children
- Porcelain crowns, root canals and implants
- TMJ therapy and denture stabilization with mini implants
- Complimentary nitrous oxide offered for your comfort!

**ZOOM!  
Whitening  
AND  
INITIAL  
Sensational  
SPECIAL**  
Call for details

**Weatherford Cosmetic & Family Dentistry**

[www.weatherforddentistry.com](http://www.weatherforddentistry.com)

114 W. Columbia • Weatherford • 817-594-3806

## Dental Sleep Medicine

**Better Sleep  
Better Life**



Do you snore loudly?

Do you often feel tired, fatigued or sleepy during the day?

Has someone observed you stop breathing while asleep?

Do you have or have you been treated for high blood pressure?

**Often symptoms may include:** Waking up with a headache; dozing when reading or sitting; restless or fatigued sleep

Oral appliance therapy is recommended by the American Academy of Sleep Medicine and the National Institute of Health in all cases of CPAP intolerance and for the treatment of mild to moderate obstructive sleep apnea. As a result, most medical insurance companies cover the cost of oral appliance therapy.



**Deborah A. Romack, DDS**  
Weatherford Cosmetic & Family Dentistry  
[www.weatherforddentistry.com](http://www.weatherforddentistry.com)

*We can E-File medical insurance or Care Credit can help with out-of-pocket expenses.*

**CareCredit**  
Patient Payment Plans

*We accept Medicare.*



# Willow Park

REHABILITATION & CARE CENTER

Call today to schedule a personal tour: 817-757-1200

300 Crown Points Blvd. • Willow Park, TX 76087

## Happy Independence Day!



*Willow Park Rehabilitation*  
**WELLNESS FAIR**  
[www.willowparkcare.com](http://www.willowparkcare.com)



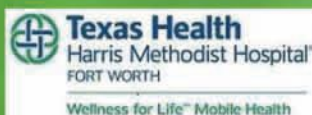
July 23

10:00 until 1:00

Free Health  
Screenings



An Affiliate of Kindred at Home  
Blood Sugar Testing



Wellness for Life™ Mobile Health  
Mammograms / Wellness Check  
To schedule: 1-855-318-7696



To schedule: 1-800-366-2834

[https://www2.greatpartners.org/donor/schedules/drive\\_schedule/64439](https://www2.greatpartners.org/donor/schedules/drive_schedule/64439)



Balance Testing



Hearing Screen



Blood Pressure Screen  
Cholesterol Screen  
(Fasting Screens)



Food for purchase

Hydration Station



Power of Attorney Education  
Blood Pressure Checks



Medicaid Assistance





# Confidence.



Stephen Stamatis,  
M.D., FACOG  
Board-Certified  
OB/GYN

Krista Lemley,  
D.O.

Tim Tarkenton,  
M.D., FACOG  
Board-Certified  
OB/GYN

Lindsay McBride,  
D.O., FACOG  
Board-Certified  
OB/GYN

## You and your new baby are in the right hands.

When it comes to your well-being and the health of your new baby, you want to feel confident that you and your newborn are receiving excellent medical care delivered by a highly skilled staff. With four dedicated OB/GYNs to choose from, our goal is to make your experience even more memorable with extra pampering and special touches along the way. Start preparing for the big day with our free childbirth classes and enjoy spacious labor and delivery suites that feature comfy, home-like accommodations.

For more information, call 682-582-1102.





# Gardening







# for Monarchs

— By Erin McEndree

*Carol Welch remembers her grandfather fondly working in his garden in Cleburne. He planted roses and flowers that beautifully bloomed in spring and vegetables that were tasty come summer. He instilled in her a love of nature and gardening. In 2011, Carol enrolled in the Parker County Master Gardener Association to foster that love. She learned safe and effective gardening practices, which help conserve the natural environment. Carol also educates the public at local events about gardening topics from azaleas to zinnias. One area where much attention has been placed is the preservation of the Monarch butterfly.*

The PCMGA is under the umbrella of Texas A&M AgriLife Extension Service. "Training consists of two classes a week for six weeks taught by A&M professors, AgriLife specialists, extension agents and Master Gardeners," Carol said. "It's mindboggling the amount of information we learn." Topics include: lawn care, landscape design, plant and soil nutrition, weeds, insect and disease management, water conservation and other horticulture topics. After a test, 50 volunteer hours are required at the AgriLife Extension office, Master Gardener projects and other events. The program is a constant hands-on learning experience, and

what is learned is taught to others. "It is a wonderful group of volunteers, and everyone seems to settle into an area that suits them most," Carol said. "Surprisingly, my favorite part is teaching the public." Plant propagation is an area of focus for Carol. She loves the science of making more plants by dividing, grafting and taking cuttings.

Last year, Carol and two other Master Gardeners, Lee Ann Nave and Sunshine Lockley, became aware of the plight of the Monarch butterfly. They are being considered for the endangered species list. In 1996, the population of the Monarch butterfly was over 3 billion. Today, approximately 10 percent of their population remains. Carol, Lee Ann and Sunshine wanted to know why the drastic dip in numbers. "We learned that butterflies were losing their habitat due to an increasing population, use of improved, pesticide-resistant crops and the loss of approximately 6,000 acres a day of native habitat," Carol said. These Master Gardeners, together with Steven Chamblee, horticulturist at Chandor Gardens, developed a plan to help the butterflies.

Monarch caterpillars are picky eaters. They only have an appetite for milkweed. "There are more than 100 species of milkweed, but only three are native to this area," Steven said. "They can be found at independent nurseries and at the Master Gardener plant sale every second Saturday in April." Nectar-filled flowers are also important for the Monarch, and Steven's recommendations include: lantana, pentas, Gregg's mistflower, cosmos and zinnias. Planting these and other varieties will give Monarch butterflies a food source for their migration.

Monarch butterflies leave their winter roosting area at the El Rosario Monarch Butterfly Preserve in the Mexican state of Michoacán in late February and March. They begin a long migration northward to Canada. Monarchs may lay over 1,000 eggs during the journey. A yellow and black caterpillar emerges from the egg in three to five days. It can



**Celebrating 25 Years of Business!**

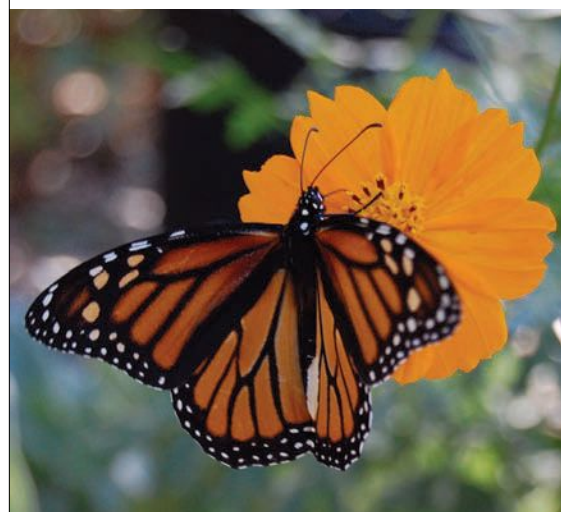


**Chris' Service Muffler, Inc.**  
 1102 Ft. Worth Hwy. • Weatherford, TX 76086  
 (817) 613-0011 • [www.chrismuffler.com](http://www.chrismuffler.com)  
 Mon-Fri 7:30-6pm • Sat 7:30-2pm • CHRIS NEWTON, Owner

**Complete Exhaust Service • Performance Diesel Custom Pipes  
 Catalytic Converters - EPA Appr. • Brakes • Shocks • Struts • Front End**



eat a whole milkweed leaf in as little as five minutes. In two weeks, the caterpillar starts the metamorphosis process, which transforms them into the vibrant orange and black Monarch butterfly.



“The first three-to-five generations will live six-to-eight weeks and migrate north toward Canada. The last generation each year will live six-to-eight months and migrate south more than 2,000 miles back to Mexico. It is also this last generation that migrates back into Texas every spring. It has been documented that a Monarch can fly as high as 11,000 feet and may travel 275 miles in a single day,” Carol explained. “It is amazing to me that such a tiny creature can accomplish such a journey. With all we know about the science of the brain, we cannot figure out how they navigate.”

With Steven's experience and expertise, Carol, Lee Ann and Sunshine made a plan to create a Monarch Waystation

# CONNECT HEARING WANTS TO HEAR FROM YOU!

*Exceptional service.  
 Great staff.  
 Convenient location.*

**New Name,  
 Same Great Service!**

If you purchased your hearing aids from **Jones Audiology & Hearing Aid Centers**, you are part of the Connect Hearing community. Come in for a **FREE** hearing aid check-up and cleaning.



**Trey Horn HCP, and  
 Susan Vargas PCC**  
 look forward to serving you.

The team at Connect Hearing Weatherford can help you **stay connected** to the sounds of life, with:

- The latest hearing technology
- Hearing solutions for every lifestyle and budget
- A 3-Week **FREE** Hearing Aid Trial\*
- Price Match Guarantee†

Stop by today to meet **Trey Horn**, our hearing healthcare practitioner.

**Connect Hearing Weatherford • 300 South Main Street, Ste 204  
 888.376.2987**

Find us across from the Methodist church in the same parking lot as Dollar General.

[connecthearing.com](http://connecthearing.com)

\*Certain types of hearing loss may require a hearing aid model that is not appropriate for the Three-Week Free Trial. See center for details. † As a member of the Connect Hearing network, if we don't already have the lowest price, we will match any valid competitor quote or advertised price on hearing aids within 60 days of purchase.

**Connect Hearing**  
 YOUR HEARING PROFESSIONALS







at Chandor Gardens. According to Monarch Watch, a Waystation must meet certain criteria to be certified. It must be at least 100 square feet in size. Milkweed and nectar flowers must be present so the butterflies can lay their eggs and have a good source of food. There must also be a plan to maintain the area from year-to-year. Steven helped the Master Gardeners certify Chandor Gardens as Waystation No. 9502 in December 2014. As a gesture of appreciation, the site was named Steven Chamblee Monarch Waystation at Chandor Gardens in April 2015.

Along with the Waystation program, Monarch Watch and key universities are responsible for tagging and tracking Monarchs throughout their migration. The tags lay gently on the underside of the hindwing. This information helps establish migration patterns and the factors that affect migration, such as weather and food sources. Tags also determine survival rates among Monarch butterflies.

Chandor Gardens' new Monarch Waystation is now a training area for the Jr. Master Gardener Program. This busy children's program is responsible for installing a second Waystation at Soldier Spring Park. They found a large area of milkweed that was completely indigenous to the area. Using a wildflower seed ball recipe, the children planted a large area of wildflowers and milkweed in October 2014. The area was certified in December 2014 as Monarch Waystation No. 9638.

Six more locations have been selected by PCMG to develop into Waystations. These sights encompass areas all over Parker County, including: Azle Central Park, Aledo Community Center, Cross



## Jumping for joy in our new Sandlin home!



# SANDLIN HOMES

*Family building since 1957*

**SandlinHomes.com**

(800) 821-HOME (4663)

**FROM THE \$190s TO \$240s**

**WEATHERFORD**  
**Bedinger Place**  
\$190s-\$240s  
Phase IV  
Now Open!



5TH BEST PLACE TO RETIRE  
"Money" magazine

### Quick Move-In Homes!

At Sandlin Homes, our family-owned and operated business has been building homes for 58 years.

### New Models Now Open!

We have new homes that will be ready for a Quick Move-in soon, in a great location just minutes from Lake Weatherford.

Visit now to take advantage of our special Design Center incentives on these homes! Discover why you'll be jumping for joy about owning a new Sandlin Home.



NMLS 178258  
150 Westpark Way, #250  
Euless, TX 76040  
817-283-LOAN



All loans subject to underwriter approval. Terms and conditions apply. Subject to change without notice. Equal Housing Lender. Guild Mortgage Company, PrimeLending and Sandlin Homes are not affiliated.



A PlainsCapital Company.  
NMLS 178251 817.799.2859





**BIG or small,  
We ship it ALL!**

**FedEx** **ups** **DHL** **UNITED STATES POSTAL SERVICE** **LSO**

Packing Service • Fax / Notary • Mailbox Rentals

**» ON »  
DEMAND  
PRINTING**

**Box & Go Shipping**  
817-599-0675 • Fax 817-599-6875

**We Also Offer:**  
Laminating, Binding,  
Packing, Mailboxes,  
Packing Supplies, and  
Promotional Products

**502 N. Main • Weatherford (on the corner of Front and Main) • [www.boxngoshipping.com](http://www.boxngoshipping.com)**



*Dentistry for every generation.*

## Dental care that goes beyond smiles.

Dentistry is more than providing a healthy smile. It is also about building a healthy relationship with our community and the families we serve. Call us to set up your first appointment.



DR. WILL GOODWIN

- Gentle & conservative care
- Insurance friendly
- Warranty on dental care
- Before & after work hours

...and more

[ALEDODENTISTRY.COM](http://ALEDODENTISTRY.COM)

682.312.5260

Timbers Demonstration Garden in Willow Park, National Vietnam War Memorial, Weatherford Public Library and the Extension Office in Weatherford. “Waystations are so important for the survival of the Monarchs, and people are encouraged to help by planting Waystations in their own backyards,” Carol said.

Carol enjoys sharing her knowledge about safe and effective ways to garden. While preparing for programs, she admits she always learns new and different things. In her presentations, she equips people with numerous techniques to preserve the environment, including how to use chemicals responsibly. “We support green products if there is research to back it up,” Carol said. “Even green products have natural chemicals that may be harmful if used improperly. For example, natural products that kill harmful insects may also kill the good insects that help aerate the soil and pollinate plants.”

The Master Gardeners, coupled with Steven Chamblee, have inspired community members to use safe and effective ways to preserve the city’s beauty, both naturally and responsibly. “Becoming a Master Gardener is the best thing I ever did,” Carol said. “It is so rewarding and challenging, and sharing what I have learned is important.” Carol has learned skills she will be passionate about for years to come. **NOW**

*Editor’s Note: For more information about Monarch butterflies, visit [www.monarchwatch.org](http://www.monarchwatch.org) or [pcmg-texas.org](http://pcmg-texas.org).*





# BOOMIN

# 4<sup>th</sup>

**July 4, 2015 ~ 6:00 p.m. to 10:00 p.m.**

Call East Parker County Chamber of Commerce at  
(817) 441-7844 for more information and sponsorship opportunities.

**WWW.BOOMIN4TH.COM**

Entertainment begins at 6:00 p.m.

Fireworks start at 9:15 p.m.

Gene L. Voyles Park ★ 210 North Lakeshore Drive ★ Hudson Oaks

5:30 p.m. - Shuttle Bus Parking located at WalMart, 2801 E. I-20 Hudson Oaks

**FREE EVENT**

*Fireworks Sponsors:*

**JERRY'S GM**  
WEATHERFORD, TEXAS

Charlie Gilchrist's  
**SouthWest**  
AUTOGROUP  
Family Owned & Operated Since 1989

*Event Sponsor:*

**ROGER WILLIAMS**  
AUTOMALL  
WEATHERFORD, TX  


*Media Sponsor:*

**WEATHERFORD**  
\*\*\* DEMOCRAT \*\*\*

**EAST PARKER COUNTY**  
Chamber of Commerce  
"A Proud History, A Bright Future"

**HUDSON OAKS**

*Sponsors as of May 20, 2015*





# DREAM COME *True*

— By Amber D. Browne



## AT HOME WITH

*Most people envision a reality in which they reside in their dream home. For some, the dream begins with an idea and leads to years of sacrifice and saving. Once everything falls into place, that dream is built into existence. Will and Lili Turnbow's vision of owning a comfortable home to create memories with their children has become a reality.*



WILL AND LILI TURNBOW





The Turnbows began their journey to Texas by way of Seattle, Washington. Will's career in engineering brought them to Fort Worth, but after two years, they returned to Seattle and then briefly lived in Utah near Will's parents. The Turnbows returned to Texas and settled in southwest Fort Worth, where Will works as an engineer at Lockheed Martin. "It got really crowded," Lili explained. Their vision began with the purchase of a lot in a quiet neighborhood several blocks from Lake Weatherford. Over the next eight years, they saved and planned for their dream home.

They looked at floor plans for years until they found a designer, and together they came up with a unique plan. "We figured if we're not going to use the room, we don't want it," Will said. After a couple of builders fell through, the Turnbows hired Couto Homes of Granbury to build their custom house. They added some finishing touches on the 3,400-square-foot home before moving in December 2014.

Their daughters, Sydney, 12, and Hannah, 10, chose vibrant colors of paint for their bedrooms. "We painted it before the house was finished and the carpet was added. It was a lot easier that way," Will stated. Sydney's room is lime green with an emphasis on the ceiling, as is apparent in other rooms throughout the home. Her ceiling is painted white and turquoise. A red accent wall pops in Hannah's bedroom, which is otherwise painted black and white, including a striped ceiling and decorative scroll. Her love of sports is evident, with a basketball goal hanging from the door and trophies lining bookshelves. Both girls display Pop! figures by Funko on their shelves. They may have picked up their love of character figurines from their father.

In the office, Will shows off his collectible toys on several large wooden bookshelves. He plans to build and

# ABUNDANT HEALTH NATURALLY

Nutritional Supplements & Organic Food  
Helpful and Friendly Staff • We Carry Only the Highest Quality Products

★★★★★ **10% OFF** ★★★★★

**Grass Fed Beef, Free Range Chicken and Ground Turkey**

One coupon per person. Not valid with any other offers. Exp. 7-31-15

1913 Martin Drive, Weatherford, TX 76086 • 817-599-3004 • [www.abundant-health-tx.com](http://www.abundant-health-tx.com)



## IN THE BIG INNING

HEAVY HITTERS IN THE HALL OF FAITH

# MUSICAMP

**JULY 27-31, 9AM - 3:45PM**

**Learn an entire Musical, complete  
with Songs and Drama**

Open to students who have  
completed grades 1-6

**\$89 Tuition Includes:**  
t-shirt, camp supplies, music CD,  
lunch each day, and Thursday outing  
to Splash Kingdom Water Park

[www.lakeshorebaptist.com](http://www.lakeshorebaptist.com)



Find us on

**200 S. LAKESHORE DRIVE**  
**HUDSON OAKS, TX 76087**  
**817.596.0100**





replace them with a permanent bookcase with a hidden closet door to make more room for his collection. Will has accumulated hundreds of toys over the years. Some of his favorites — Conan, Batman and Wonder Woman — are proudly displayed. Framed portraits of Dungeons and Dragons characters line the office walls, and the domed ceiling teases visitors to look up and enjoy the craftsmanship.

The theater/game room ceiling reveals elegance with a barrel dome ceiling. While enjoying the view, visitors are transported outside with LED lights that resemble stars. Will and Lili spent hours drilling the holes in the ceiling to



arrange the lights and create a cosmic atmosphere. Blackout curtains cover the windows, as moviegoers' eyes are drawn to the 10-foot theater screen. The theater/game room provides space for hours of entertainment, watching videos or playing board games. Visitors



can curl up on the comfy couches or the oversized bean bag chair to enjoy freshly made popcorn or candy from the lighted display case.

The kitchen has plenty of space for family and guests. With granite countertops throughout, the kitchen includes a large island and a bar where the girls eat breakfast each morning. Above the stovetop, a pot filler provides fresh water for cooking. "I thought it was ridiculous, but I use it so much," Lili admitted. A couple of drawers in the kitchen are masked by a glass insert filled with candies. "Will really wanted a lot of details in the house." Speakers were installed in each room and the patio. Each morning, they turn on the stereo and listen to music as they get ready for the day.

Their three-car garage is full of tools Will uses to build furniture for the house, arcade games and extravagant cakes for the girls. He and Lili bake cakes for their birthday parties, complete with characters and moving parts. Their cakes and other creations can be seen on their website, [www.willyliliana.com](http://www.willyliliana.com). In the future, Will hopes to build a craft table for the

**3CM GRANITE COUNTERTOPS - \$35 SF INSTALLED**

**CORNER STONE WEST  
GRANITE & FLOORS**

**Carpet • Laminate • Tile • Complete Kitchen & Bath Remodel**

**FREE Estimates**

**5" Handscraped Hardwood  
\$5.99 sf Installed**

**Frieze Carpet & Textured Carpet  
\$1.89 sf Installed w/ Padding**

**12-mm Laminate Flooring  
\$3.69 sf Installed**

**817.CSG.WEST**

**817.274.9378**

**3905 Fort Worth Highway, Weatherford, TX 76087  
I20 & Mikus • [www.CSGweatherford.com](http://www.CSGweatherford.com)**



**SELLING YOUR HOME? Save 2% plus!  
\$1000 Seller Agent Listing**  
Justin Goddard - Agent / Realtor - 817.703.1631





# Kaden<sup>TM</sup> HOMES

**(817)781-3996**

Extraordinary Experience  
&  
Spectacular Living

## Lost Creek ESTATES

Golf Course Community

Model Address:

11820 NORTHVIEW DRIVE

## La Cantera

Private Gated Community

Model Address:

5312 SENDERO DRIVE



[www.kadenhomes.com](http://www.kadenhomes.com)

Our  
**BIGGEST  
SALE EVER!**

**DRASTIC PRICE REDUCTION!  
BRING YOUR TRUCKS & TRAILERS!!**



One of a kind items!



Shop Early  
for Best  
Selections!

**MATTRESSES-  
ALL Sealy & Corsicana  
ON SALE!**

"Finally brothers, whatever is true, whatever is noble, whatever is right, whatever is  
admirable- if anything is excellent or praiseworthy- think about such things". -Phillipians 4:8

**1508 FORT WORTH HWY, Weatherford • 817-341-4449**



**Happy 4<sup>th</sup>**

**Better Health Market**  
YOUR NATURAL HEALTH STORE

1716 SANTA FE DR. • WEATHERFORD, TX 76086 ★ 1450 E. HWY 377 • GRANBURY, TX 76048  
817-596-8818 817-578-3131

**20% OFF**  
TOTAL PURCHASE  
1 coupon per customer, per visit.  
Not valid with any other special offers.  
Exp. August 15, 2015

**COME TRY OUR HOMEMADE ICE CREAM FOR INDEPENDENCE DAY!**

**Best Burgers in Town!**

**Buy any Malt or Shake GET 2ND REG. SIZE 1/2 PRICE**  
(equal or lesser value)  
With coupon only.  
One coupon per visit, please.  
Not valid with other offers.  
Exp. 7/31/15

**1/2 PRICE**  
Pint of Ice Cream  
Buy a quart of homemade ice cream and get a pint for 1/2 price  
With coupon only.  
Not valid with other offers.  
One coupon per visit, please.  
Exp. 7/31/15

**BUY ANY BURGER AND GET A REG. BURGER 1/2 PRICE**  
With coupon only. One coupon per visit, please.  
Not valid with other offers. Exp. 7/31/15

**BUY ANY SANDWICH AND GET SECOND 1/2 PRICE**  
(Equal or lesser value)  
(Cheese extra)  
With coupon only. One coupon per visit, please.  
Not valid with other offers. Exp. 7/31/15

**9 FLAVORS OF HOMEMADE ICE CREAM**

**2038 Ft. Worth Hwy. at the Azle Hwy. (FM 730)**  
Mon-Sat: 9:45AM - 9:30PM  
Sun: 12 Noon - 9:30PM  
**817-594-2524**

**the Malt Shop**



guest room, where Sydney and Hannah house their art supplies. Both Will and Lili's families have a great deal of artistic talent. With this creativity running in the family, paintings of cheerful gnomes hang on either side of the hideaway guest bed, and Lili plans to add the girls' drawings and paintings to complement them. Will's parents, Mike and Lynda Turnbow, and Lili's parents, Raymundo and Patty Guerra, feel right at home in the guest wing during visits.

The girls attend the Fort Worth Academy of Fine Arts. Sydney is involved with a theater company, Kids Who Care, and loves to ride horses. Hannah plays soccer, softball and volleyball. "She wants to do every sport on the planet," Lili grinned. Both girls play piano. In



their free time, the family goes tent camping and exploring. Lili teaches pre-kindergarten at McKinney Bible Church, and in her free time, she takes portrait photographs. Frames throughout the home display her work.

Will and Lili met at her sister's wedding in Mexico. Will was a friend of the groom. "It was love at first sight,"



Lili beamed. Several months later, they got married at an intimate ceremony in Cody, Wyoming, in December 1997, and returned to Mexico for a large, more formal wedding in April 1998. They don't return to Mexico as often now that the girls are school-aged, but Lili's parents visit them several times a year.

Growing up in Mexico, Lili was known for her love of video games and Nintendo. "I loved playing Mario and Street Fighter," she said. Gaming is a



hobby she had in common with Will. "When we met, it was a good topic of conversation."

Will, Lili and their daughters have attended Fan Expo sponsored by Dallas Comic Con and Comic-Con International: San Diego several times. Will peruses the toys and comics, and of course, all of them enjoy seeing their favorite actors and comic book writers. For each of the events, Lili sews the girls' costumes. "It's fun. The girls dress up. We don't," Will laughed.

Family time is important to the Turnbows, and with their dream home now a reality, they've enjoyed making new memories. On the patio, the girls can roast marshmallows at the gas fire pit on the table. In the evenings, Will and Lili pull down the patio shades as the sun sets and watch the girls frolic in the grass with their new puppy, Max. "We are sitting on a dream that we had for a long time. It's been a long road," Lili said, "but we have this comfortable house. For us, it's perfect." **NOW**

**We have talented summer help ready to work!**

**Express**  
EMPLOYMENT PROFESSIONALS

*"Respecting People. Impacting Business."*

Send resumes to [junell.mauch@expresspros.com](mailto:junell.mauch@expresspros.com) and go online and apply at [expresspros.com](http://expresspros.com)

**218 Santa Fe Drive**

PHONE 817-594-3600 or 888-644-3600 • FAX 817-594-1499

- General Labor
- Office Help
- Professional
- Temporary
- Temp to Hire
- Direct Hiring

**Businesses needing employees CALL Express!**

**GUY A. WALKER, D.D.S., PLLC**

*Smile*  
**BRIGHT**  
FOR THE 4TH

**NEW FOR PATIENTS WITHOUT INSURANCE**

In-office dental savings plan designed to provide quality dental care at an affordable price.

Call or come by our office for details.

- ❖ Cosmetic Crowns ❖ Bridges
- ❖ White Fillings ❖ Root Canals
- ❖ Implants ❖ Periodontal Care
- ❖ Customized Dentures
- ❖ Nitrous Oxide (Laughing Gas)

**Conservative, Quality Dentistry in a Caring Environment**

Accepting Most Insurance  
New Patients by Appointment  
**817.594.7427**  
[www.guywalker dental.com](http://www.guywalker dental.com)

200 E. Rentz Street  
Weatherford, TX 76086

Guy A. Walker, D.D.S., PLLC  
General Dentistry



# Variety of *Form*

— By Amber D. Browne

*Artistry comes in many forms. Musicians create masterpieces of harmonies, while engineers erect buildings to stand for centuries. The definition of the word artist encompasses many professions, all of which create or master a skill. An artist of several forms, John Stout is known for hundreds, if not thousands, of creations. The 72-year-old's varied masterpieces include: carved wooden toys for his children, pin-striped motorcycles and classic cars, advertisements and signs for local businesses and painted family portraits.*

While driving through downtown Weatherford, you may have noticed the Parker County Peach Festival mural displayed on the Downtown Café. It is one of John's creations. The 20-by-25-foot mural has covered the building's brick since 2002 and was updated with the date each year, until recently. The colorful invitation now displays the event date as the second Saturday of July on a blue ribbon, which also includes the title of the fun-filled afternoon. The Parker County Courthouse stands brightly in the center surrounded by peaches, of course.

John first noticed his artistic abilities at an early age when he drew a German airplane in the back of the family Bible. His late father, Paul Stout, was in advertising, so creativity ran in the family. When John and each of his three brothers turned 14, they were to report to their father's sign shop. "He was







going to teach us all that trade, and then we could do whatever we wanted to after that," John explained.

Raised in a lower-income family, John didn't have the luxury of time. "We had to get paid for every minute," he shared. So, John would sell his ideas and make them a beautiful reality on the first try. "Being raised in that atmosphere, it almost gave you a poverty spirit. To come out of that, you spend the rest of your life to make more. I would always try to do that with my labor rather than my investments. It didn't make a difference what came along."

John took the experience he learned from his father and briefly attended art school. "I knew more than my teachers," he laughed. Although he doesn't have much professional training, John's studies haven't slowed. "If a job comes up," he said, "I head to the library." Research is crucial to any project John accepts. "I'm constantly looking for stuff that I can study and teach myself." He often takes

***Fancy's***  
**Plus Size  
 Resale Shop**  
 Sizes XL - 5X  
 Mon. - Fri. 10:00 - 5:30 • Sat. 10:00 - 4:30  
 318 D Santa Fe  
 Weatherford  
 817-599-4944



**SUMMER  
 SPECIALS!**  
**20% OFF**  
**Entire Purchase**

Must Bring Ad for Discount  
 Expires 7/31/15

[www.fancysplussizeresale.com](http://www.fancysplussizeresale.com) • Like us on Facebook 

Brakes • Shocks • Struts • Suspensions • Air Conditioning • Electrical  
 Engines • Lift Kits • Clutches • After Market Accessories  
 4 Wheel Drive • State Inspection • Alignments • Free Diagnostics and more!

***We Are Your Dealership  
 Alternative For All Your  
 Mechanical Needs!***



**Automotive and Truck Repair**



**We Specialize in Power Stroke,  
 Cummins, Duramax Diesel Trucks**

**NOW OPEN!**

**Servicing cars and trucks  
 of ALL makes and models**



**Oil Changes  
 State Inspections**

Only Authorized Castrol Dealer in Parker County.

**2033 FM 920 (Peaster Highway) • 817.341.2033 • 2033MOTORSPORTS.COM**




# OPEN CARRY IN TEXAS! ARE YOU READY?

**Gun Store • Pro Shop  
Private Lessons • CHL**



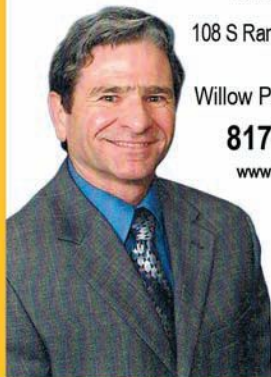

**Outdoor Range**  
4104 Zion Hill Rd., Weatherford, TX 76088  
817.341.4903 • [www.texastactical.com](http://www.texastactical.com)

## Happy Independence Day

**Gregg Davis, AAMS®**  
*Financial Advisor*

108 S Ranch House Road  
Ste. 300  
Willow Park, TX 76008  
**817-441-6612**  
[www.edwardjones.com](http://www.edwardjones.com)



Member SIPC

**Edward Jones®**  
MAKING SENSE OF INVESTING

### NEW PHARMACY NOW OPEN IN WEATHERFORD, TEXAS

By providing traditional pharmacy services as well as prescription compounding, Town Creek Pharmacy aims to meet the needs of the Weatherford community.



**Shane Kester, PharmD**  
has spent his entire career in the community pharmacy setting, and is now the pharmacist in charge at Town Creek Pharmacy.

Conveniently located in the lobby of Lone Star Pain Medicine.



**OPEN Mon-Thurs**  
8:00-5:30 p.m.,  
**Fri** 8:00-1:00 p.m.

907 E. Eureka Street Suite. B1  
Weatherford, Texas 76086  
P: 817.458.5292 | F: 817.599.3456



photographs of clouds or flowers to study the colors. He studies color theory to learn how to mix paints to create the perfect shade. "The knowledge of art started with color combinations."

John's father taught him creativity and the art of sales. "You must first know people. People mean soul, and soul means spirit, mind and emotion," John shared. "You have to do a lot of listening, ask a lot of questions, don't show off, pick their brain and then go home and try it."

Over the last six decades, John has used his knowledge and know-how of reading people to share his ideas with the world. After high school, he enlisted in the Army and was stationed in Germany with a recon outfit in the 3rd Cavalry Regiment. John was unassigned, so he took his father's advice and carried around a paint brush. He soon found himself painting buildings for the Seventh Army. "We got second most decorated company in Europe in 1963." John's brother, Stewart Stout, who was stationed in Munich at the time, earned first place the same year. "We kept it in the family," John laughed.

While stationed in Europe, John and two of his buddies traveled the countryside taking note of the architecture and artwork. He was always aware of what was around him. He also spent some time studying art in Israel. Later in life, he was called on to paint scriptures in calligraphy, which once hung in the Assembly Hall in Jerusalem. "I said, 'Awe, I must be internationally known,'" he smiled. John finds joy in painting and sculpting anything that glorifies the Lord. He has carved several crosses and paints cherubs and angels in





many of his murals. In his down time, John studies the Bible and attends two churches — Grace Community Church in Weatherford and Convergence Church in Fort Worth.

Over the years, John has had his hand in a variety of projects. "In time, you become known as the guy who can do anything," he said. John's home is filled with his paintings and architectural models. His work can be found on and inside buildings in the local area and across the globe. He was responsible for refinishing about two-and-a-half miles of 3/8-inch thick mortar during the restoration of the Parker County Courthouse. Over three weeks' time, he stenciled the design and filled it in by hand. He has also painted nose art on airplanes for the Confederate Air Force and hand-carved and painted five horse carousels, which are displayed in several states. For 20 years, John painted arena



**MYSER**  
**ORTHODONTICS**  
Willow Park and Aledo  
**AledoBraces.com**  
Schedule your complimentary  
New Patient Exam today!

*"Our goal is to serve every family  
as if they are a part of our own."*  
Serving Parker County for over 50 Years!

**Galbreath-Pickard**  
FUNERAL CHAPEL  
G-P

James R. Plowman  
jamesplowman@gpfcnet.com  
Norma Plowman

913 N. Elm St., Weatherford, TX 76086  
817-594-2747 | 800-593-2747





**Summer Special**  
 Unlimited Mini Golf & Spin Zone  
 \$10 per person 11-6  
 \$13 6-close  
 Monday-Friday  
 Can't be combined with any other coupon or specials.

**Indoor:**

- Blacklight Miniature Golf
- Spin Zone Bumper Cars
- 3 Batting Cages
- 2 Practice Tunnels
- State-of-the-art Arcade Room
- Full Snack Bar
- 4 Party Rooms (Booking NOW!)

**Like us on Facebook for up-to-date info & specials.**

1819 S. Main St. • Weatherford, TX 76086 • 817-599-6520  
 (same building as Tractor Supply)

**www.holeinfunentertainment.com**




logos for the National Cutting Horse Association and other organizations in the industry.

At one time, John built and painted 42 stage coaches with J.W. Brown. His stage coaches have not only been displayed in buildings and advertising but also featured in movies. United Artists requested a 30-year-old stage coach for a movie set 100 years ago. To the disbelief of J.W. Brown, John threw a gallon of brown paint on the \$60,000 stage coach and began spreading it over its exterior. "I got a dry rag and started wiping it all off, except for the corners," he stated. Next, he used a process to paint a grain-like appearance on the coach, striped it and then scuffed the striping to give it an aged look. Upon delivery, a United Artists representative threw a shovel of dirt on the coach and approved it for filming. "The studio didn't have to do anything to that coach to make it ready for filming. Especially coming from where I come from, that's good," John laughed.

John has taken about a year off from painting professionally and his volunteer work with the Weatherford Art Association to care for his best friend, Ron Smith, who suffers from Muscular Dystrophy. John and his wife, Judi, consider Ron a brother. John is delving into his art a little more these days and is currently working on a piece for his daughter.

"If you understand art, I don't care what you want to do, you have something to add. It's the root, the soul and spirit to be creative," he confessed. John considers himself a servant. Although those who witness his artwork may not know who created it, they can gain peace or joy from it. "It just gives them a moment. That's what we're here for." **NOW**



The ONLY custom-blended E-juices in Weatherford.

**RED, WHITE & BLUE SALE**



**4TH OF JULY PARTY**  
 on the 3rd of July  
 with hot dogs and  
 hamburgers  
**DOOR PRIZES!**

KBOX WITH THE ATLANTIS TANK  
**\$99.95**

Buy any size juice get a  
**FREE 10ml Juice**

**Order Online @**  
**Vaporswestweatherford.com**  
 Coil & Battery repair by Dale

1808 Santa Fe Dr. Ste. #105 • Weatherford  
**940-654-0886**

HOME • AUTO • COMMERCIAL  
 WINDOW TINT • SIGNS • BANNERS  
 VEHICLE GRAPHICS & MORE

*HOT Summer is here.*  
*Block it out!*

COME SEE OUR SPECIALS FOR THE MONTH OF JULY!

**THE TINT SHOP**

1137 FT. WORTH HWY  
 NE CORNER OF BANKHEAD AND FT. WORTH HWY  
**TINTSHOPTX.COM**  
**817.694.0111**

OVER 30 YEARS' EXPERIENCE



**Up to \$50 OFF**  
**Select Packages**  
 Call for details.

*Gift Cards Make Great Birthday Gifts!*



*Celebrate  
Tradition*

*July 11, 2015*

# *Peach Festival*



*3118 Fort Worth Highway  
Weatherford, Texas 76087*

*JERRY DURANT  
AUTO GROUP  
[jerrystexas.com](http://jerrystexas.com)*

***FIND NEW ROADS™***





# 2015 Peach Festival Shopping Guide



[fortworthcustompools.org](http://fortworthcustompools.org)  
[fortworthcustompools@msn.com](mailto:fortworthcustompools@msn.com)

- Custom-built Gunite Pools
- Outdoor Kitchens, Cabanas & Arbors
- Remodels & Renovations
- Custom Designed Retaining Walls
- 3-dimensional Drawings
- Service & Pool Care
- Financing Available

*"From Our Family to Yours"*  
**Glen Bullard/Tyler Bullard**  
Family Owned & Operated

**FORTWORTH**  
  
**Custom Pools**

3332 W. 7th St., Fort Worth  
**817-732-7665**  
Aledo Showroom: 703 FM 1187  
**817-441-8100**



**FREE  
ESTIMATES**

**INDOOR/OUTDOOR  
RESIDENTIAL &  
COMMERCIAL  
INSTALLATION &  
SURROUND SOUND**

**PRE-WIRE NEW HOMES**

Locally owned & operated  
Weatherford business  
owner for 31 years.  
**References available!**



**SOUND EXPRESSIONS**

212 Santa Fe Dr.  
Weatherford, TX 76086  
**817-594-2423**



## BRAZOS EXTERIORS

Serving Parker, Hood, Tarrant and surrounding counties.



**FREE  
Estimates.  
Call Today!**



- PATIO COVERS
- DECKS
- FIRE PITs
- FIREPLACES
- OUTBUILDINGS
- ROOM ADDITIONS
- SIDING
- ROOFING
- PERGOLAS

**Jay** : **Dayson**  
**817-243-2652** • **682-229-4404**





# 2015 Peach Festival

## Shopping Guide




**BIG or small,  
We ship it ALL!**

**FedEx** **ups** **DHL** **UNITED STATES POSTAL SERVICE** **LSO**

- PACKING SERVICE
- FAX / NOTARY
- MAILBOX RENTALS

**» ON »  
DEMAND PRINTING**

**502 N. Main  
Weatherford**  
(on the corner of Front and Main)

**Box & Go Shipping**  
**817-599-0675 • Fax 817-599-6875**  
**www.boxngoshipping.com**



**We Also Offer:**  
Laminating, Binding,  
Packing, Mailboxes,  
Packing Supplies,  
and Promotional  
Products



Samsung  
Galaxy S6

**\$0  
Down**

With 29.99% APR loan agreement.  
Interest charged if not paid in full in  
6 months. Well qualified customers only.  
New activation required.  
1st month service charge due at sale.

Visit your local (JPP ENTERPRISES) authorized Cricket dealer location(s) below:

1918 S. Main St.  
Weatherford, TX 76086 **817-757-7767** **cricket™**  
wireless

Limited Time Offer. 18-month credit offer available only to well-qualified customers. Credit check, approval and installment loan agreement required. Includes financing of the full price of the phone (\$649.99) plus applicable taxes: \$19.99 minimum initial payment due at time of purchase (paid on customer's behalf by Cricket); monthly payments of \$45.66 plus device sales taxes for 17 months required; 29.99% APR. Deferred interest option for first 6 months (no interest due if balance is paid in full within 6 months); otherwise 29.99% APR from the date of the purchase. Scheduled minimum monthly payments will not pay balance in full in 6 mos. Service activation on a qualifying Cricket smartphone plan and first month service charge payment required. For full terms and conditions, see installment loan agreement. Fortwa® installment loan offered by Mid America Bank and Trust Company, Dixon, MO. Only well-qualified customers will be offered these loan terms; other customers may be offered rent-to-own option provided by YBUY Financial, LLC. See store representative for details. Financing offers not provided by Cricket Wireless LLC.  
© 2015 Cricket Wireless LLC. All rights reserved. All other marks contained herein are the property of their respective owners.



**Woodland Hills Estates**  
Entertainers Paradise!



**North Star Crossing**  
4/3 with pool!



**Your House Here**

Call for a **FREE**  
evaluation of your home. **817-304-6700**  
**skeetershook@remax.com • www.skeetershook.com**




Welcome to the 31st Annual  
Parker County Peach Festival!

**Galbreath-Pickard**  
FUNERAL **GP** CHAPEL

Serving every family as if you are a part of our own.

913 N. Elm St., Weatherford, TX 76086 | 817-594-2747 | 800-593-2747

**AUTO • HOME • FARM & RANCH • COMMERCIAL**



Welcome to the Parker County Peach Festival!

**Wallace**  
INSURANCE AGENCY

"With Wallace Insurance, It's Not Just Business ...  
**WE Make it Peachy!**"

Weldon "Wally" Wallace  
Agent

**817-341-7766 • 117 N. MAIN ST. • WEATHERFORD**  
**WWW.WALLACEINS.NET**





# 2015 Peach Festival

## Shopping Guide



*art, craft and activity vendors*  
**LIVE ENTERTAINMENT**  
**KID'S KORNER ACTIVITIES**  
**LOCALLY GROWN**  
**FRESH PRODUCE**  
**AND THE FAMOUS**  
*Peach Pedal*  
**B I K E R I D E**

**\$5 ADMISSION**  
**FREE ADMISSION FOR KIDS 12 and UNDER**  
**[PeachFestivalTX.com](http://PeachFestivalTX.com)**



Serving Hood, Parker, Tarrant & Johnson Counties

### FREE ROOF INSPECTION

Call today to set up a time.



## DT ROOFING



**[WWW.DTROOFING.NET](http://WWW.DTROOFING.NET) • CALL 817-579-7800 FOR FREE INSPECTIONS**  
**Locally Owned & Operated • Residential & Commercial • Local References • Insured**





**CHEVROLET**

# ***Jerry's Chevrolet***

***3118 Fort Worth Highway  
Weatherford, TX 76087***

***[jerryschevytexas.com](http://jerryschevytexas.com)***

***800.574.6902***





# Revamping the Kid's Room

— By Sara Edgell

*The decor of a house is a direct reflection of the family that resides within, and the same is true of a child's bedroom. As children grow, their interests, hobbies and tastes change. What they find appealing from ages 4 to 7 will very likely be different from an 8- to 12-year-old and definitely different from a teen. Luckily, remodeling, redesigning and redecorating their personal space to encompass the things they love doesn't have to be an expensive undertaking.*





## Getting Started

Use the experience as an opportunity to work on the project together and bond. The very first thing to do is talk about the things your child would like to see in the space. Discuss current likes and dislikes, favorite colors, interests, hobbies and needs.

A wonderful place to start is with a theme, as this can determine color palette, accessories, bedding and even furniture. For example, if a 12-year-old girl is dreaming of a shabby-chic, vintage cottage bedroom, the colors will likely be soft pastels. The decor will include lots of floral fabrics and refurbished furniture pieces, such as a whitewashed, vintage vanity and nightstand. Repurposed picket fence planks could also be used to build a



headboard and/or shelving units, or they could be used to line the walls, starting at the baseboard and coming half way up the wall.

Assessing the project and what it will entail before developing a plan is important. Make a list of items to be purchased, as well as those that can be repurposed, determine "do it yourself" projects versus those requiring the expertise of professionals and, lastly, decide a budget and stick to it. Then, you are ready to begin.

## Painting

Painting is perhaps the most inexpensive and easiest way to revamp a room. With a little prep and good old-fashioned elbow grease, a space can be completely transformed in a matter of hours. Because color can greatly

## International Shipping Available!



Next door to Kincaid's Hamburgers  
220 Adams Drive, Ste 280  
Weatherford, TX 76086  
Phone: 817-599-6607  
Email: aim115@aimmailcenters.com  
Web: www.aimmailcenters.com/115

**Store Hours: Mon-Fri 9am-6pm  
Sat 10am-4pm, Sun Closed**

**Good for the Month  
of July, 2015 Only!**

**35% OFF  
Any DHL  
Shipment**

Must bring coupon to redeem offer. Valid at participating AIM Mail Center location in Weatherford, TX. Not valid with any other coupon or discount. Additional restrictions may apply. Each AIM Mail Center location is independently owned and operated.  
©2015 Annex Brands, Inc. Offer Expires: 07/31/15.



*Believing That Love Makes  
the Healing Difference*



*Nursing • Therapy • Social Workers  
Home Health Aides*  
Joint Commission Accredited

109 Larson Rd. Suite 100 • Aledo, TX  
817.441.2747  
BeyondFaithHomeCare.com



*We Believe in People*  
220 Ft. Worth Hwy., Ste. 125



Weatherford Access  
Center now conducting  
Intensive Outpatient  
Therapy. Daytime and  
evening hours available.  
Call if struggling with:

- Mental health issues, including thoughts of harming self/others
- Behavioral health issues for geriatrics, adults, adolescents or children
- Chemical dependency issues (drug & alcohol detox with ongoing counseling to stay sober)

**No cost – no obligation  
assessments available  
24 hours a day!  
(817) 374-7911**





## Chapman's Carpentry

Off-duty Firefighter



# 817-946-6787



Bathroom Remodel



### HONEST & DEPENDABLE

- Interior & Exterior Remodeling
- Sheetrock Repair
- Laminate Flooring
- Patio Covers
- Painting
- Tile

**No Job Too Small!!**

Quality Work at a Reasonable Price • 31 Years' Experience

influence mood, and since children are typically drawn to bright, bold colors, compromising on paint selections is crucial.

Take into consideration the size of the room. Lighter shades of blue, teal, purple and green can open up a smaller space, whereas darker, richer tones like plum, magenta, burnt orange and ruby can be overpowering, making the space feel even smaller and cramped. Lighting is another factor to consider. Natural light will show the truest color, whereas incandescent and florescent lighting will cast hues on the color, altering its appearance. Give your child the freedom to pick their paint color, with a bit of compromise considering these factors.

## Personal Touches

Decorative painting techniques are also an option. Many craft stores carry a variety of stencils that could be used to create a slew of personalized wall graphics. You can also make your own stencil using a piece of cardboard, pencil and box cutter. Simply draw the design on the cardboard and carefully cut it out. From the popular chevron pattern to more specific designs like sailboats and anchors, cheetah print or a favorite quote, stencils — whether store-bought or homemade — make the job a breeze.

While stencils are helpful, they will not enable you to create the whimsical ambience only a custom-painted mural can deliver. From magical fairytale forests to vibrant cityscapes, nothing can top the work of a local artist or painter. These individuals are easy to find and can bring your child's vision to life like no one else can do.

## Furniture, Storage and Lighting

Storage and functionality are two areas to consider. Understanding the activities the space will accommodate is key. For example, is a desk needed for homework?

# Nails Spa

*Let us make you gorgeous for the 4th!*

**Pedicure Specials**

**NOW OPEN SUNDAYS**

**\$5 OFF PEDICURES**  
\$38 and up Not valid with any other offer. Expires 7/31/15

**Purchase a gift card today!**

**817.594.5225**  
112 College Park Dr. • Weatherford, TX 76086  
Near Super Save Grocery

**\$5 OFF ANY DIPPING GEL/POWDER NAILS**  
Not valid with any other offer. Expires 7/31/15

**Mon-Fri 10 a.m.-7 p.m. • Sat 9 a.m.-6 p.m.**  
**Open Sun 12-5 p.m. • April-October only**

Complete & Professional Nail Care and Waxing for Women & Men  
Walk-in or by appointment • Student discounts with ID

facebook.com/nailsspa1f

## THE PERFECT PLACE FOR YOUR PERFECT DAY.

THE PERFECT VENUE FOR YOUR EVENT

QUIET, PARK-LIKE SETTING FOR ALL OF YOUR SPECIAL EVENTS.

- THREE GAZEBOS
- BRICK WALKWAYS
- KITCHEN AREA
- INDOOR SANCTUARY (CAP. 120)
- KOI PONDS

### PRAISE PAVILION WEDDING & EVENT VENUE

CONTACT BARBARA LITTLEPAGE  
817-829-5930 FOR MORE INFO.  
Located At The Brock Junction, also the home of Cutting Capital Fellowship Church





Will a television and gaming system be kept in the room? Are there lots of toys or books requiring storage? All of these factors must be determined in order to decide the specific types of furniture the room will need.

You may be able to carry over large pieces of furniture, such as a bed or dresser, into the new room or update them with paint to fit the theme your child has chosen. However, in some cases, purchasing new furniture may be necessary. If your child wants a super-cool and highly functional loft bed complete with a shelving unit and desk underneath, or maybe they desire their own hidey-hole built into the window frame, hiring a carpenter is in order. These professionals can build custom pieces of furniture, shelving and closet organization, or even change the layout of a room by removing or building new walls.

For new lighting fixture installation or construction, master electricians are needed. Not only can they effortlessly install anything from a ceiling fan to recess or track lighting, they can also add extra outlets. No matter the job, when it comes to dealing with high voltage, letting a professional handle the task is the way to go.



# MORE TV. LESS MONEY.

LIMITED-TIME  
OFFER!

## Smart Pack

Everyday Price \$34.98/mo

12-MONTH SPECIAL

**\$19.99**  
mo

SAVE  
\$15/mo

Not eligible for  
Hopper offer.

**OVER 55  
CHANNELS**

Animal Planet  
Bloomberg Television  
Boomerang<sup>SAP</sup>  
Cooking Channel  
C-SPAN<sup>SAP</sup>  
C-SPAN2

Discovery Family Channel  
DishHOME Interactive TV  
DIY  
Food Network  
Great American Country  
Hallmark Channel

Hallmark Movies & Mysteries  
HLN  
HSN  
Nickelodeon/Nick at Nite (E)<sup>SAP</sup>  
Nickelodeon/Nick at Nite (W)  
Nicktoons Network

Outdoor Channel  
Pop  
QVC<sup>SAP</sup>  
RFD-TV  
Science  
TV Land

Weather Channel  
*Plus Many More*

## FREE HOPPER UPGRADE

UNBEATABLE WHOLE-HOME HD DVR

- Watch all your live and recorded TV anywhere
- Instantly skip commercials
- Store up to 2,000 hours of your favorite shows
- Record up to 8 different shows at the same time\*

\*Requires Super Joey.  
Features must be enabled by customer. Available with qualifying packages. Monthly fees apply: Hopper, \$12; Joey, \$7; Super Joey, \$10. Requires Internet connection.

## SPECIAL OFFERS INCLUDE:

**FREE** PREMIUM CHANNELS for 3 months

**SHOWTIME** **starz** **encore** **ENCORE HD SPECIAL**

Offer subject to change based on premium channel availability.  
\*Free premiums offer available with all plans. Note, Encore is included in America's Top 250.

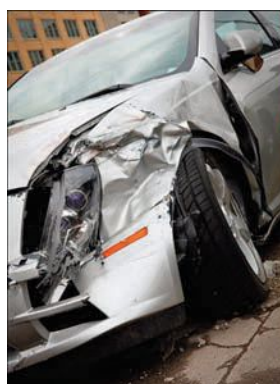
**BUNDLE AND SAVE WITH DISH**  
Ask how you can save \$10/mo.  
WITH DISHNET HIGH-SPEED INTERNET

All offers require 24-month commitment and credit qualification.

**SOUND EXPRESSIONS**  
212 SANTA FE DR. • WEATHERFORD  
817-594-2423

**dish**  
AUTHORIZED RETAILER

**Important Terms and Conditions: Promotional Offers:** Require activation of new qualifying DISH service. All prices, fees, charges, packages, programming, features, functionality and offers subject to change without notice. After 12-month promotional period, then-current monthly price applies and is subject to change. **ETP:** If you cancel service during first 24 months, early termination fee of \$20 for each month remaining applies. **Additional Requirements: Hopper:** Monthly fees: Hopper, \$12; Joey, \$7; Super Joey, \$10. Commercial skip feature is available at varying times, starting the day after airing, for select primetime shows on ABC, CBS, FOX and NBC recorded with PrimeTime Anytime. Recording hours vary: 2000 hours based on SD programming. Equipment comparison based on equipment available from major TV providers as of 12/01/14. Watching live and recorded TV anywhere requires an Internet-connected, Sling-enabled DVR and compatible mobile device. Premium Channels: Premium offer value is up to \$132; after 3 months, then-current monthly prices apply and are subject to change. **Installation/Equipment Requirements:** Free Standard Professional Installation only. Leased equipment must be returned to DISH upon cancellation or unreturned equipment fees apply. Upfront and additional monthly fees may apply. **Miscellaneous:** Offers available for new and qualified former customers, and subject to terms of applicable Promotional and Residential Customer agreements. State reimbursement charges may apply. Additional restrictions and taxes may apply. **Offers end 6/10/15.** SHOWTIME is a registered trademark of Showtime Networks Inc., a CBS Company. STARZ and related channels and service marks are property of Starz Entertainment, LLC. ENCORE and related channels and service marks are the property of Starz Entertainment, LLC. Visit [encoretv.com](http://encoretv.com) for air dates/times.



**Injured?**  
**We can help you with your options!**

**Law Offices of Scott, McNeill & Burney, PLLC**

*Achieving maximum results is our top concern.*

**PERSONAL INJURY**

AND ALSO ...

- FAMILY LAW
- CRIMINAL DEFENSE
- TRAFFIC TICKETS

**SB**

SCOTT, MCNEILL & BURNEY PLLC



(817) 441-1919 | 9946 E. Bankhead Hwy., Aledo, TX 76008 | [www.aledolegal.com](http://www.aledolegal.com)

## JSL Counseling Services

Individual, couples, family and adolescent counseling.

**Courage to Change - the First Step!**

**Specialty:** Addiction, Codependency & Mental Health

**James S. Lowe, MA, LPC**

Psychotherapist & Addiction Counselor


**Call 817-789-2213**

Evening & Saturday Appointments Available

106 Austin Ave., Ste. 205, Weatherford, TX • [www.jslcounseling.com](http://www.jslcounseling.com)









**Tactical and NFA Class 3  
Gunsmithing**

# SHOOTIST ARMS COMPANY




**CONCEALED HANDGUN  
CLASSES AVAILABLE**



Custom Gunsmithing • NFA Class 3 Sales and Service  
Suppressors • Investment Grade Firearms • Historical Restorations  
Heirloom and Estate Firearms  
Sales • Consignments • Appraisals • Transfers  
Law Enforcement Certified Armorer  
35 Years Experience • Fully Licensed and Insured

## CLASS 3 SPECIALIST

1872 Mineral Wells Hwy #101, Weatherford, Texas 76088  
817-599-6767 [www.shootistarmscompany.com](http://www.shootistarmscompany.com)




## Accessories

Additional personal touches can be added to the space with specialized accessories. These specialty items can be found anywhere and can be anything. For instance, a 7-year-old boy may want a sports-themed bedroom, complete with a basketball goal and scoreboard, a football field floor and custom-painted stadium wall.

To complement these major room components, posters can be framed and hung on the wall. Sports cards could be used to decoupage the surface of a desk or the back of a shelf. Old baseball bats could be repurposed into a bed frame or curtain rods. Jerseys could easily be transformed into curtain panels or bedding.

**SOUTH BOWIE  
CHILD  
CARE  
& PRESCHOOL**

Age 6 Weeks - 12 years  
"Bobcat Den" for after-school children

- No charge for days closed
- 20 vacation days annually at no charge

**BOBCAT SUMMER CAMP  
FOR SCHOOL-AGE  
CHILDREN**

**\$47.00** Enrollment fee  
**\$115.00** Weekly Camp Rate



**817-596-0655** Monday - Friday 6:00a.m. - 6:30p.m.  
1718 S. Bowie Dr. • Exit 406 • Weatherford



**Holy Grounds  
Coffee & Gifts**

**CHRISTMAS  
—in—  
JULY**

**25%  
OFF**  
All Gifts  
(excludes books & cards)

**FAMILY MOVIE NIGHT**  
Saturdays at Dusk (starts July 11)

108 Jearl St. | Aledo | 817-441-7770  
Hours: Mon-Sat 6:00am to 8:00pm

**Bella's**

**PET GROOMING & BOARDING**  
817.594.4196  
Over 20 Years' Experience  
1222 B. Fort Worth Hwy • Weatherford

**\$5.00 Off**  
**Any Groom**

Expires 7/31/15



The trick is to be creative and allow your child the power of choice when picking accessories for their new space.

In the end, a room redo is all about updating the space to be a true reflection of the child who occupies it. By revamping your child's room to fit their current interests and personality, you are not only acknowledging them as an individual but also providing them with a space all their own. **NOW**



# Rustic Roundup



## NOLAN Catnapper

Sectional:  
Reclining Sofa, Reclining Loveseat  
Wedge, Recliner Chair



## Special Deal! \$1,499

3-pc. Set:  
Reclining Sofa, Reclining Loveseat  
Rocker Recliner



## Catnapper 196 Portman Saddle

3-pc Set: Reclining Sofa,  
Reclining Loveseat, Recliner

# Come See Our LARGE Selection!

**BIG Man's** Rocker  
Recliner by Catnapper



Half Circle Bar



## LAYAWAYS

NO Fees! NO Time Limits!  
NO Minimum Down Payment!



**ZERO%**  
Financing  
Available  
**WAC**



King or Queen Bed



Chest



Dresser



Nightstand

**GREAT**  
**MATTRESSES**  
*at*  
**GREAT PRICES**



**Our Goal is to Provide the Best Products, Prices and Customer Service in Parker County**  
**Rustic, Traditional and Contemporary Furniture & Mattresses**

2602 Fort Worth Hwy. • Weatherford • 76087 (1/2 mile west of the Hudson Oaks Walmart) • 817-594-9229

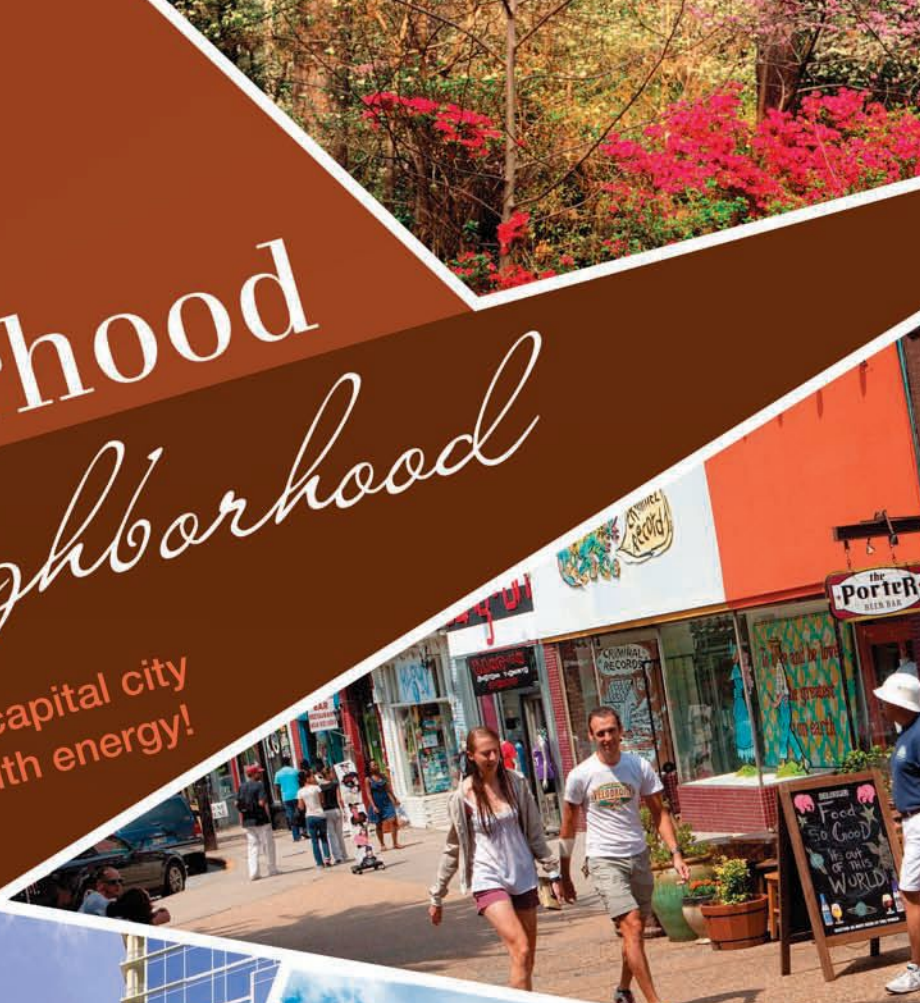
Hours: Mon.-Sat 10a.m.-6p.m. • Closed Sunday

Visit us online at [www.rusticroundup.com](http://www.rusticroundup.com)



# Neighborhood by Neighborhood

Georgia's capital city  
buzzes with energy!



The heart of the South's largest city lies beyond its gleaming glass and steel towers in bustling urban neighborhoods.

Interstate 285 forms a perimeter around the city, and just inside visitors find several distinct Atlanta neighborhoods. Each brings a unique flavor to the residential streets, gotta-find-it boutiques and chef-owned eateries.

## Iconic Downtown

Atlanta's core pulses with energy. Populated with city dwellers, business people and tourists, it is a livable center. Downtown is home to a walkable tourism corridor with hotels and more than 300 restaurants. Visitors find world-class attractions that surround Centennial Olympic Park including Georgia





Aquarium, World of Coca-Cola, CNN Headquarters, The Children's Museum of Atlanta, Center for Civil and Human Rights and the College

# BEST BUY WALK-IN BATH TUBS

*Locally Owned & Operated*

**Installed pricing from \$7,999.00**

**BUY LOCALLY**

**Family Owned  
Lifetime Guarantee  
Against Leaks**

**Visit Our  
NEW LOCATION:  
3411 E. Hwy. 377  
Granbury TX.**

QR Code | MasterCard | VISA | Discover | NuVUS

**682-205-3532**  
WWW.BESTBUYWALKINTUBS.COM

GREAT FOR CIRCULATION, ARTHRITIS, STIFF JOINTS AND RELAXATION.

BBB A+

**HAPPY FOURTH!**  
**CBR ON FSN EVERY SUNDAY**  
**BEGINNING MAY 24TH AT 6 PM**  
Check your local listings  
[www.foxsports.com/tv-listings](http://www.foxsports.com/tv-listings)  
[www.cbrbull.com](http://www.cbrbull.com)

FOX SPORTS NETWORKS | CBR Championship Bull Riding

ORVIS 2015 EXCELLENCE IN CUSTOMER SERVICE AWARD

**GREYSTONE CASTLE SPORTING CLUB**

**GREYSTONE CASTLE SPORTING CLUB**

65756 Interstate 20 • P.O. Box 158  
Mingus, TX 76463  
254-672-5927  
[www.GreystoneCastle.com](http://www.GreystoneCastle.com)

**WE BUY, SELL & TRADE GUNS**  
**LARGE SELECTION OF NEW AND USED GUNS AVAILABLE**

**BRING THIS AD IN FOR ADDITIONAL DISCOUNT ON SELECT SPORTING GOODS**

**Gibson's Sporting Goods**  
411 S. Main / Weatherford, Texas  
**817-594-8711**  
Mon-Sat 8am-8pm / Sun 9am-6pm

*Windy Hill Farm Bakery*

**July 4th Favorites**

- Birthday/Wedding
- Chocolate Truffles
- Pies & Cookies
- Homemade Caramel
- Cupcakes

**We Make Cheesecakes**

**10% Off** When you mention this ad

**(817) 565-0585**



# Fort Worth Tree & Pest Specialist



Family Owned and Operated.

- Residential/Commercial Pest Control
- Insect & Disease Control For Trees, Shrubs & Turf
- Fertilization & Insect Soil Injections

**Fire Ant Treatment ••• Oak Wilt Treatment**



**Certified Arborist & TX Licensed Pest Applicator**

**817-441-2276**



Football Hall of Fame within steps of each other. Sure, downtown may be Atlanta's tourist hub, but it's the ideal place to start an exploration of the city.

## Artist Enclave Castleberry Hill

Just southwest, Castleberry Hill etches out a space among former warehouses. Today, the community is made up of local artists and entrepreneurs, including the successful Atlanta Movie Tours, which offers tours of locales from *The Walking Dead*, *Hunger Games* and other popular films. Here, art galleries mix with organic garden spas, wine bars and tapas lounges. Locals and visitors enjoy lively 2nd Friday Art Walks, where businesses open their doors for wine, music and fun.

## Atlanta's Heart of the Arts: Midtown

Style and substance take center stage in Midtown along Peachtree Street. The famed boulevard connects three major neighborhoods while cutting a swath of culture through this district known as Atlanta's heart of the arts. Midtown boasts the largest concentration of arts facilities and organizations in the Southeast, with 25 different arts and cultural venues, more than 30 permanent performing arts groups and 22 various entertainment facilities. Locals thrive on the tree-lined lanes just beyond Peachtree Street and congregate to play at Piedmont Park.

## Rodeo Drive of the East: Buckhead

Bold and brazen Buckhead cradles the bedroom communities of the up-and-coming, as well as the city's Fortune 500 families. A shopping mecca for fashionistas across the South, this upscale neighborhood is the Beverly Hills of the East. The new, ultra-lux shopping district combines the walkable, tree-lined streets of Paris with the haute shops of

# SLIDE INTO SUMMER FUN WITH US!

**New Waterpark**

**RESERVE NOW FOR FAMILY FUN!**  
**817-426-5037**

NorthTexasJellystone.com BURLERSON - TEXAS PiratesCoveFunZone.com



Rodeo Drive. From just about any point in Buckhead, you're within shouting distance of a memorable four-star restaurant where foodies get their kicks.

### Trendsetting Westside

On the Westside, a blending of Georgia Tech culture with nearby loft communities has sprung into a focal point for a new design district in old industrial spaces. It's the go-to-place for interior design mavens looking for lighting, textiles, fabric and furniture. Like other Atlanta neighborhoods, the dining scene is thriving here. Long-time homesteaders Anne Quatrano and Clifford Harrison's famous Bacchanalia restaurant begat the city's best kitchen shop, Star Provisions, plus two other restaurants, Quinones and Abattoir. Nearby top-rated JCT. Kitchen & Bar, The Optimist, Miller Union and Antico Pizza Napoletana join the throngs of eateries catering to the city's sophisticated palate.



### Atlanta's Eastside: Home to an Urban Renaissance

The Atlanta BeltLine Eastside Trail, a multi-use trail and greenspace, runs 2.25 miles from Piedmont Park to Irwin Street, connecting neighborhoods on Atlanta's Eastside. Tattooed locals, creative street art and historic homes come together on this side of town. Stop for a pastry at Alon's in Virginia-Highland, dawdle in Highland Woodworking or try on the latest fashion statements in Bill Hallman. Poncey-Highland is the corridor that bridges between Midtown and Virginia-Highland and provides a perfect blend of these distinct neighborhoods. Off Ponce de Leon Avenue, the historic Sears, Roebuck & Co. is now Ponce City Market, which rivals New York City's Chelsea Market. PCM's food hall showcases a renewed energy trending through Atlanta's dining scene. Head down North Highland



**Add a tablet for as low as \$10/month!**

**LG G Pad 8.3**

- Front-Facing 1.3 MP
- Rear-Facing 5 MP
- Display 8.3"
- Voice Mate ice commands to send text messages/ emails to contacts, add appointments/reminders to the calendar, or complete online searches

*Start your summer off with a BANG! Get the latest and most innovative devices today!*

- XLTE Ready Doubling our 4G LTE bandwidth in cities coast to coast.
- Standby Time is up to 17 days
- Camera 16MP
- Screen 5.5" Gorilla Glass 3 Protection.

817-599-7122  
325 Adams Dr. Suite 345  
Weatherford, TX 76086  
(Belk shopping center)



Communication Connection | Premium Retailer

**Independence Day Specials!**

**FREE**

UPGRADE  
TO  
TRIPLE PANE  
WINDOWS

&

**FREE**

WINDOW  
CLEANING  
FOR 1 YEAR  
WITH PURCHASE OF 6  
OR MORE WINDOWS



817-781-6161 | WILLIAMSWINDOWSDOORS.COM



**Absolute Water of Texas**

**Cell: 682-521-3522**

**Office: 817-221-2407**



TCEQ Lic. #WT0001885

**absolutewateroftexas.com**

**Full Custom Restoration is what we LOVE to do!**

**We restore to its original beauty!**

**DADDY'S**

*Classics And Restoration*

**817.444.3227**

704 NW Parkway, Ayle, Texas 76020

**www.daddysclassiccars.com**

We breathe new life into classic and custom cars, muscle cars, hot rods and much more! We also buy and sell classic and collectible cars.



**GCS JANITORIAL SERVICES**

Commercial Cleaning You Can Trust

**817.550.6037**

100 Austin Avenue • Suite 104  
Weatherford, TX 76086

**facebook.com/graycleaning**



**A/C SPECIAL**  
RECOVERY, LEAK CHECK & RECHARGE  
INCLUDES UP TO 2 POUNDS OF FREON!  
**\$49<sup>99</sup>**  
With ad. Exp. 7/31/2015

**KINGWAY**  
**AUTOMOTIVE**  
REPAIR AND MAINTENANCE

We Install



**3 Years / 100,000 Miles**  
Parts & Labor  
**Nationwide Warranty!**



**\$250.<sup>00</sup> OFF**  
The purchase and  
installation of a Jasper  
Engine or Transmission.  
Exp. 7/31/2015

**817-598-1071 • 922 A. FT. WORTH HWY., WEATHERFORD**  
Ft. Worth Hwy. just east of the courthouse at the Jack Borden light

Avenue to Manuel's Tavern, a presidential favorite and Atlanta's quintessential neighborhood bar. End your exploration of the neighborhood with a movie at the Plaza Theatre, Atlanta's oldest operating cinema.

## Eclectic Vibes in Inman Park and Little Five Points

Inman Park combines small urban green spaces with winding boulevards lined with colorful Victorian and Queen Anne-style homes in the city's first planned suburb. The classic architecture and landscape designs jut up against the skyscraper backdrop. The scene edges into a Bohemian style in Little Five Points, where vintage dress matches the creativity of tattoos. While spots like Junkman's Daughter have become *de rigueur* for the young, others can't resist the kitschy places like The Star Community Bar and Little Vinyl Lounge, with a shrine to Elvis. But all is not grunge here. Performing arts venues such as 7 Stages Theatre, Dad's Garage Theatre and Variety Playhouse lend artistic authenticity to Little Five.

## Old Meets New in Atlanta's Old Fourth Ward

What's old is new again in Old Fourth Ward, where this neighborhood continues to redefine itself. Edgewood Avenue has experienced a resurgence, transforming into a hotspot. This street has several options for enjoying the night, including Joystick Gamebar, Sister Louisa's Church of the Living Room & Ping Pong Emporium and The Sound Table. Once an epicenter of African-American commerce, the Sweet Auburn Historic District continues to flourish on the city's southeast side. Auburn Avenue, known in the 1950s as the nation's most affluent African-American street, houses a curb market, bakeries and clubs near the Martin Luther King Jr. National Historic Site and Ebenezer Baptist Church.

As you navigate Atlanta, neighborhood by neighborhood, you'll begin to buzz with its energy. Go to [Atlanta.net](http://Atlanta.net) for additional resources and to plan your visit. **NOW**

By Stacy Shade. Photos © 2015, Kevin C. Rose/[AtlantaPhotos.com](http://AtlantaPhotos.com).



**Lone Star**  
**Fence Staining**  
*Specializing in Wood Fence and Decking*  
**817-287-1434**  
Free Quotes



**MOP HEADS**  
Cleaning Services  
**Janitorial**  
"Let Our Family Help Your Family"  
Commercial • Residential • Apartments • Carpet  
**817-692-1031**

**Eagle Mountain**  
**Auto Salvage, Inc.**  
Over 2500 Cars Full of Parts.  
All Parts Guaranteed.  
WE BUY CARS & TRUCKS!  
**817-237-3350**  
9901 Jacksboro Hwy.  
Fort Worth, 76135  
[eaglemountainsalvage.com](http://eaglemountainsalvage.com)

**Brazos Movers**  
Local or Long-distance  
**FREE ESTIMATES! 817-565-9148**  
Insured & Bonded  
Full Service  
Movers & Packers  
Local Company  
[Estimate@brazosmovers.com](mailto:Estimate@brazosmovers.com)  
**www.brazosmovers.com**





We're your  
emergency contact.

## Emergency Services

If you have an emergency, the emergency department at Texas Health Neighborhood Care & Wellness Willow Park is here to get you through it. Open 24 hours a day, our nurses and doctors specialize in emergency care and are ready for strokes, heart attacks, childhood accidents and more. We also have access to the largest health care network in North Texas, so we will get you the help you need no matter what. When an emergency strikes, come to an ER that's ready for it.

817-757-1600  
[TexasHealth.org/ER-Willow-Park](https://www.texashealth.org/ER-Willow-Park)

 **Texas Health**  
Neighborhood Care & Wellness<sup>SM</sup>  
WILLOW PARK

Part of Texas Health Harris Methodist Hospital Fort Worth



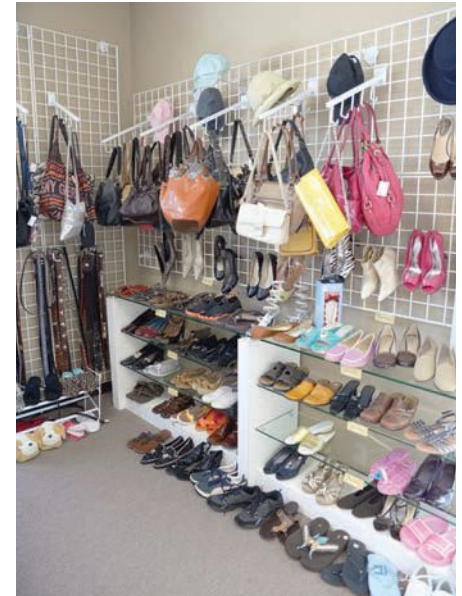


### The Hope Chest

1020 Fort Worth Hwy.  
Weatherford, TX 76086  
Phone: (817) 757-4410  
michelle@thehopechestresale.com  
www.thehopechestresale.com  
Also on Facebook.

### Hours:

Tuesday-Saturday: 10:00 a.m.-6:00 p.m.



*The Hope Chest offers shoppers clothing, jewelry, home decor and more.*

## FILL IT WITH HOPE

*Through its work program and upscale resale items, The Hope Chest provides a much-needed service to the community.*

— By Amber D. Browne

Employment is not just a means for income. It provides an opportunity to follow dreams and passions, boost self-confidence and contribute to the community. With The Hope Chest's new work program, area residents are able to gain the experience needed to realize their dreams and find full-time employment. While helping the cause, shoppers are finding bargains on upscale merchandise.

The Hope Chest opened its doors on Fort Worth Highway in June 2014. The upscale resale shop is a program of Parker County Center of Hope. For 10 years, the shop was only an idea, until CEO Paula Robinson began to see a need for a work program. "We needed a place for our students to receive on-the-job training and develop their skills," Paula explained. "We then realized what a great opportunity a resale shop would be to learn the soft skills needed to become a valuable employee."

The vision of the resale shop was there, but Paula was not

sure how to kick-start that type of program. Within a few days, Michelle Rivera was at her doorstep. Michelle owned several plus-size resale shops and had a calling to do more. She met with Paula and pitched her upscale resale shop idea. "We did a lot of praying. We did a lot of planning," Michelle explained, "to see if it would work out. I sold my stores to come do this. It was a challenge, but it has been a blessing." Michelle, who serves as The Hope Chest store manager, believes her professional work over the past five years prepared her for this project.

Many Parker County residents receive help from Center of Hope. Short-term crisis aid is available for groceries, utilities or medical bills, but those services only fix a temporary need. "For participants who need more help, we have the Education and Career Development program," said Staci Markwardt, Center of Hope development director. Students can participate in classes such as Jobs for Life, Adult Education and Computer Skills



## Business **NOW**

for Business, which is a class taught in partnership with Weatherford College. With the new work program, graduates of these classes can interview for internships at The Hope Chest. "When you don't have experience, it's hard to go out and get a job," Staci stated. "That's where Michelle comes in."

Once hired at The Hope Chest, interns can work up to 25 hours each week for up to six months. "They will work one-on-one with a supervisor," Michelle said, "and receive hands-on experience." Michelle hopes to partner with local businesses to supply their interns with job opportunities.

The Hope Chest accepts donations during business hours, and all proceeds benefit Center of Hope. The shelves and racks are stocked with new items every

With The Hope Chest's new work program, area residents are able to gain the experience needed to *realize their dreams.*

day at prices up to 75 percent off. "We pride ourselves on having nice things," Michelle shared. "I wanted it to feel like a boutique."

Treasured volunteers, Michelle and a few staff members have helped keep the shop running as the final touches were put on the internship program. The Hope Chest has also had remarkable response from donors. "We've been very blessed with the type of items we get," Michelle shared. The upscale resale shop offers clothing and shoes for all ages and sizes, items for infants and children, jewelry, purses, furniture, home decor and more. "You know that when you bring something to The Hope Chest, it is helping the person next door. It is helping your friend in need. It is helping someone in our community." **NOW**

**ONE YEAR ANNIVERSARY SALE July 7th-11th**

*All proceeds benefit Center of Hope.*



**thehopechestresale.com**

- Furniture & Home Decor
- Apparel & Accessories
- And more!

**Hours: Tues-Sat 10am-6pm**

**SHOP • DONATE • VOLUNTEER**

1020 Fort Worth Hwy. | Weatherford, TX 76086 | 817.757.4410

*The Hope Chest is a program of*  
**Parker County Center of Hope.**



**Center of Hope**  
PARKER COUNTY

 Find us on facebook



# Now Hiring

**Photographer (Part-time)**  
Email resumes to  
jill.rose@nowmagazines.com.

**Production**  
Must be proficient in InDesign CS5 or greater and possess basic Photoshop knowledge. Prior production experience required.  
Email resumes to jill.rose@nowmagazines.com.

**Advertising Sales**  
Must be self motivated and driven to take great care of your customers and grow your territory. If this describes you ... we offer Excellent Commissions, Group Health, Dental, Vision, Life Insurance and Retirement Plan. Email resumes to Rick Hensley at  
rhensley@nowmagazines.com.





Dallas Police Department Detective Cathy Delapaz trains dozens of area law enforcement officers at an event hosted by the Aledo ISD and Parker County Sheriff's Office.



Casey Graves, head designer at The Flower Shop in Aledo, shows off one of the available arrangements.



Morgan Kieffer, Brittney Bartley and Hannah Myers stock fresh vegetables at the Weatherford Farmers Market.



Dr. Allison Stamatis, Associate Professor of Natural Sciences, is recognized as the Weatherford College 2015 Faculty Member of the Year by 2014 winner, Scott Williams.



Hall Middle School's Shivam Sapkota and Jade Hebbert are named Weatherford Optimist Club's Boy and Girl for May 2015.



Rotary Club of Weatherford awards 10 Parker County students, including these five, with the Jim Bozzell Scholarship.



These children enjoy some tunes at the East Parker County Library Garden Party.



Jennifer Williams, Patti Chambler and Landace Ortiz finish plans for the Parker County Peach Festival.



Donna Boone, CNO, wins the Kiss the Pig contest at Weatherford Regional Medical Center. Employees voted for a senior leader to kiss the pig to benefit the Employee Fund.



# Dining DEALS

**The PIZZA place**  1218 S. Main  
817-594-0591  
PUT YOUR TRUST  
IN OUR CRUST

**FREE SMALL PIZZA**  
BUY A LARGE, GET A SMALL  
(Same number of toppings) No Delivery, Pick-up Only!  
One coupon per customer per visit.  
Not valid with any other special offers. Expires 7/31/15



**Need More Business?**  
Advertise your restaurant here.  
For information, call:  
**817.613.1533**

**NOW** MAGAZINES  
Bringing the best of the community home.

**CHINA HARBOR**  
*Super Buffet*  
Hibachi & Sushi Bar

**SERVING**  
**Prime Rib & Oysters**  
*for dinner & weekends*



**20% OFF**  
Adult Buffet  
With purchase of one beverage per buffet.  
Dine in only. Not valid on holidays or  
with other offers/discounts. Expires 8/3/15.

**\$5<sup>00</sup> OFF**  
With purchase of  
\$35 or more.  
Dine in only. Not valid on holidays or  
with other offers/discounts. Expires 8/3/15.

**817.598.0055**  
1810 S. Main St., Weatherford, TX  
(Exit 408-Hwy 171)

**MONTANA RESTAURANT**  
 Open 7 days a week 11A-10P  
Private Room Available

**\$5 OFF**  
**TWO PLATTERS**  
Must Present Coupon. Not good on any other offer  
or any other specials. Offer expires 7-31-15.

1910 S. Main • Weatherford • 817-341-3444  
1454 E. Hwy. 377 • Granbury • 817-573-2500

*Just in Time For Spring!*

**\$7.99**  
Pork, Chicken or Turkey Sandwich,  
Fruit Pie & 16-oz. drink.  
With this coupon.

 **BAKER'S RIBS**  
817-599-4229  
1921 South Main St.  
Weatherford

Open Daily: 7AM - 9PM   

**BIG BURGER**



**Now Serving Breakfast!**

**817.594.2785**  
NEW HOURS:  
Mon-Thurs 7:00AM-8:30PM  
Fri 7:00AM-9:30PM  
Sat 8:00AM-8:30PM  
Sun 11:00AM-8:30PM

**BUY ONE, GET ONE  
HALF OFF**  
Buy any one menu item at reg. price, get second  
menu item of equal or lesser value at half price.  
Valid only with coupon. Not valid with any other offer.  
EXP. 8/31/15

**www.BIGBURGERTX.com**

3322 Fort Worth Hwy, Hudson Oaks, TX  
(Across from Jerry's Hyundai)



## Should You Make Investment Moves Based on a Strong Dollar?

Currently, the U.S. dollar is pumped-up and powerful. But what does a strong dollar mean to you, as an investor?

To begin with, it's important to understand just what is meant by a "strong" dollar. The U.S. dollar does not exist in a vacuum. Its value, from a global perspective, is determined by its changing strength relative to that of other currencies. Let's look at an example: Suppose that, in 2011, you traveled to Europe and wanted to trade in one dollar for its equivalent value in euros. At that time, your dollar would have converted to about .75 of a euro. Fast-forward to early 2015. If you returned to Europe now, your dollar would fetch you almost one full euro. In other words, you can buy more euros, because the dollar is stronger.

In fact, earlier this year, the euro hit a 12-year low versus the dollar. And it isn't just the euro. The dollar is strong against almost every other major currency in the world. What has led to this strength? It's not always easy to determine what's behind foreign exchange rates, which can fluctuate even more than the stock market. But the recent surge in the dollar seems to be due, at least in part, to its obvious connection to the American economy, which has been growing faster than many other economies around the world. The stronger dollar is also due to expectations that interest rates will remain higher in the U.S. than in many other countries.

But whatever the reasons for it, the dollar's strength may be having an impact on your investments. A strengthening dollar typically lowers returns from international investments, because you get fewer dollars in exchange for the value in euros or other foreign currencies. And some U.S. companies

with a global presence may face challenges due to lower earnings from their international operations.

These results might lead you to think that a strong dollar would be bad news for the stock market, but that hasn't been the case in the past. At different times, the markets have performed well with both a strong and a weak dollar.

In contrast to its impact on U.S. companies, a strong dollar can help foreign companies compete and may give them an earnings boost from their U.S. sales. Also, the stronger dollar can help make foreign investments cheaper. Even more importantly, by taking advantage of the stronger dollar and investing an appropriate amount internationally, gaining exposure to different economies and markets, you can help diversify your holdings, which is important. Although diversification can't guarantee a profit or always protect against loss, it can help reduce the impact of volatility on your portfolio. Be aware, though, that international investing carries special risks beyond currency fluctuations, including political and economic instability.

The strong dollar may have attracted your attention, but don't be distracted by it — and don't overreact. Currency exchange rates can fluctuate rapidly, and no one can predict how long a strong dollar environment will last. By sticking with a solid, long-term investment strategy, you can help keep up the strength of your own dollars. **NOW**

*This article was written by Edward Jones for use by your local Edward Jones Financial Advisor. Gregg Davis is an Edward Jones representative based in Willow Park.*



GLASGOW | TAYLOR | ISHAM | GLASGOW  
ATTORNEYS AT LAW

FREE CONSULTATIONS

Family Law · Personal Injury · Criminal Law  
Trusts & Estates · Civil Litigation

*We Specialize in Family Law,  
Criminal Law and Civil Litigation*



AV Rated by Martindale-Hubbell  
WEATHERFORD, GRANBURY AND STEPHENVILLE

925 Santa Fe Drive, Suite 102, Weatherford, Texas 76086  
817-596-8700 • [www.GTIGLAW.com](http://www.GTIGLAW.com)





## Gaining Momentum

As PlainsCapital grows, so does our momentum, strength, and presence. We would like to officially announce the opening of our new Granbury branch. PlainsCapital looks forward to serving our customers in Granbury and the surrounding areas for many years to come.

1100 East Highway 377, Suite 101  
Granbury, TX 76048

817.573.2342

[PlainsCapital.com](http://PlainsCapital.com)

**PlainsCapital Bank** 

© 2015 PlainsCapital Bank  Equal Housing Lender Member FDIC

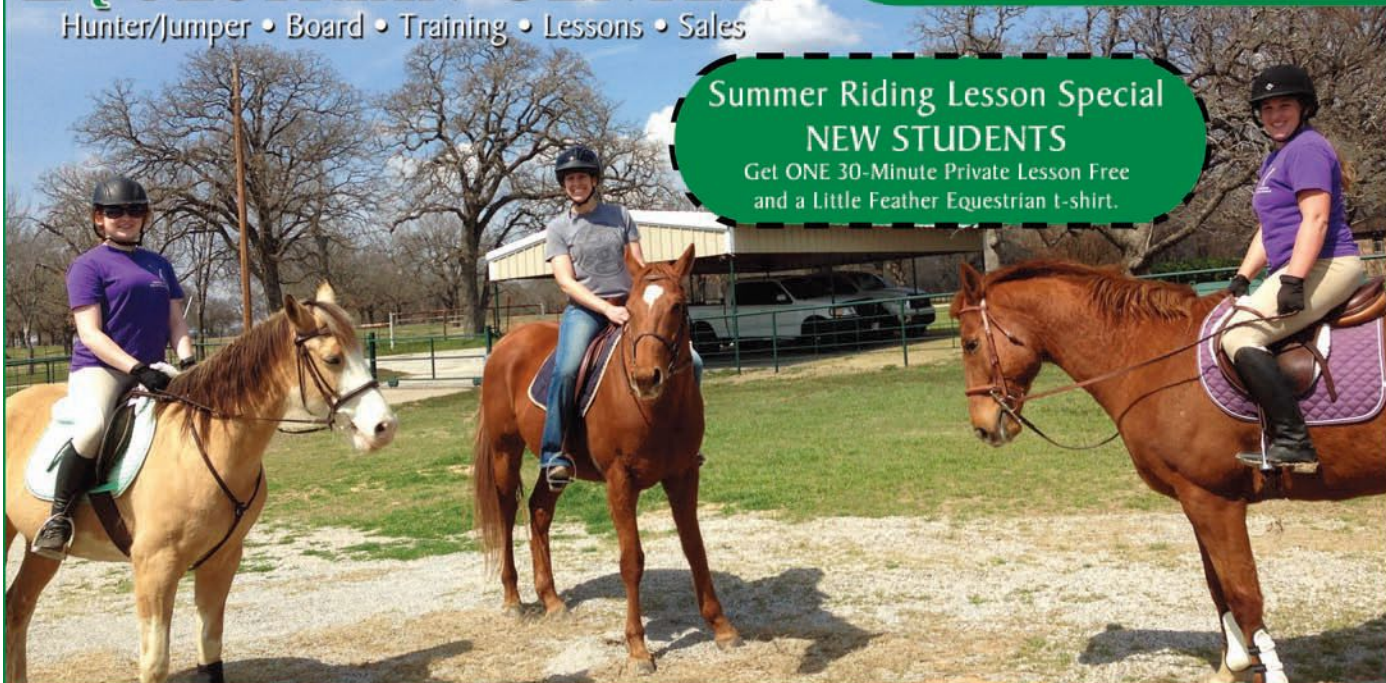
## LITTLE FEATHER X EQUESTRIAN CENTER

Hunter/Jumper • Board • Training • Lessons • Sales

- Trainer has more than 10 yrs. professional experience
- Certified by the American Riding Instructors Association
- English riding lessons for all levels (ages 7 & over)

### Summer Riding Lesson Special NEW STUDENTS

Get ONE 30-Minute Private Lesson Free  
and a Little Feather Equestrian t-shirt.



Contact Rebecca • 432-853-1008 • [www.littlefeather.org](http://www.littlefeather.org) • 871 Pamela Kay Ln., Weatherford, TX





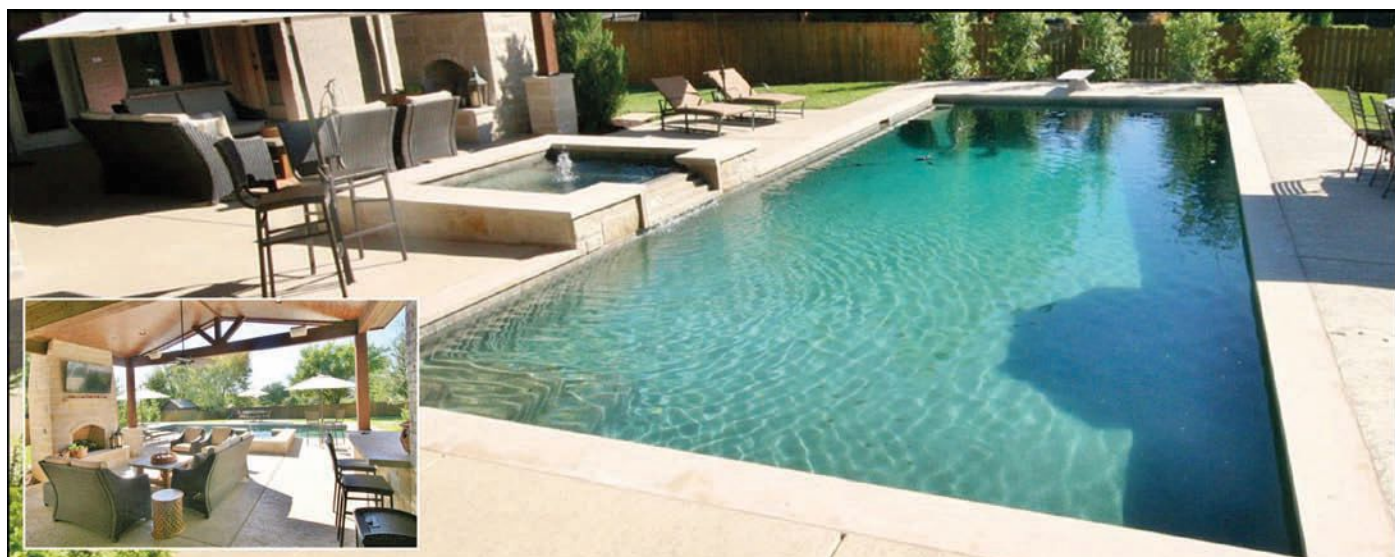
**Tio Lucas**  
RESTAURANTE MEXICANO

**Authentic MEXICAN FOOD AND TEX-MEX CUISINE**

**UNDER NEW MANAGEMENT**  
*For a Better Experience*

Try One of Our **Peach Margaritas**

**216 WEST HWY. 1-20 • WEATHERFORD • (682) 262-1300**



**Custom Pools and Spas • Luxury Outdoor Living Spaces • Complete Pool Renovations • Dedicated Service Team**

**Pulliam Pools**

Innovative pools built on experience since 1916



**HOME OFFICE**  
2725 Altamesa Blvd.  
Fort Worth, Texas 76133  
**817-346-4778**

**PARKER COUNTY OFFICE**  
3292 Fort Worth Hwy.  
Hudson Oaks, Texas 76087  
**817-613-1910**

[www.pulliam.com](http://www.pulliam.com)

*Pulliam Pools would be honored to build your outdoor stay-ca-tion destination!*





# Celebrate the 4th with a Fence!

**5% OFF**  
any purchase when you mention this ad.

We sort and classify our used pipe into several different grades, which allows you, our customer, to meet your structural and budgetary needs.



**VARNER PIPE, LLC**

## Oilfield Tubing & Casing

- Used Tubing in stock
- New & Used

## Structural Pipe & Sucker Rods

- Several Grades
- Precut Fence Post

We provide forklift and trucking services for our customers' own pipe needs, as well as pipe that Varner Pipe, LLC sells. Delivery charges are based on distance and order size.

**3290 Ranger HWY, Weatherford, TX • 817-599-9590 • [www.varnerpipe.com](http://www.varnerpipe.com)**

# White's Funeral Home

*Our family serving your family since 1908*



Richard Woodman, Jim Cleaver, Andy Browning, Jillian Johnston, Anita White, Bob White, Kari Drake, Bruce Duncan & Robert Sheffield

*Full-service Funeral Home • Cremation Services • Pre-need Plans*

Azle • Springtown • Mineral Wells • Weatherford

817-596-4811 • [www.whitesfuneral.com](http://www.whitesfuneral.com) • 130 Houston Ave. • Weatherford, TX



### July 3 — 5

First Monday Trade Days:  
9:00 a.m.-4:00 p.m., First Monday Grounds at Heritage Park, 200 Santa Fe Dr. Dozens of vendors will sell home-made crafts, livestock, tools, food and other items. Please visit [www.ci.weatherford.tx.us](http://www.ci.weatherford.tx.us) or call (817) 598-4359 for more information.

### July 4

Boomin' 4th: 6:00 p.m., Gene L. Voyles Park, 210 N. Lakeshore, Hudson Oaks. The free, family event has fun for all ages including arts and crafts, face painting, food trucks and more. A fireworks extravaganza will end the evening. Parking is available at Walmart with a free shuttle bus to the event. Call the East Parker County Chamber of Commerce at (817) 441-7844 or visit [www.boomin4th.com](http://www.boomin4th.com) for more information.

### July 7, 21

History Alive: 10:30-11:30 a.m., Doss Heritage and Culture Center, 1400 Texas Dr. On **July 7**, area children can learn about leather, and on **July 21**, they will learn about swinging and square dancing at the free events. Please visit [www.dosscenter.org](http://www.dosscenter.org) for additional information.

### July 9

Log Cabin Concert Series: 7:30 p.m., Doss

Heritage and Culture Center, 1400 Texas Dr. Belinda Gail will perform. Tickets are \$25, and sales benefit the restoration of Parker County log cabins. Visit [www.dosscenter.org](http://www.dosscenter.org) for more.

### July 11

Peach Pedal Bike Ride: 7:30 a.m., Weatherford High School, 2121 Bethel Rd. The ride benefits scholarships and other assistance for students through the Weatherford College Foundation. Packet pick-up begins at 6:00 a.m., and the races' start times are staggered. Check out [www.peachpedal.com](http://www.peachpedal.com) for more.

### Parker County Peach Festival:

8:00 a.m.-5:00 p.m., Historic Downtown Weatherford. Entertainment, children's activities and 200 vendors will offer a day a fun for attendees. Contact the Weatherford Chamber of Commerce at (817) 596-3801 or visit [www.parkercountypeachfestival.org](http://www.parkercountypeachfestival.org) for additional information.

### July 11, 25

Parker Paws Adoption Events:  
11:00 a.m.-2:00 p.m., PetSmart, 138 E. Interstate 20. Furry friends will be looking for new families. Please visit [www.parkerpaws.org](http://www.parkerpaws.org) for more information.

### July 16

Quilter's Guild of Parker County monthly meeting: 6:30 p.m., Grace First Presbyterian Church, 606 Mockingbird Ln. Dr. Paula Barnes of Red Crinoline Quilts will share information about quilting. For more information, visit [www.quiltersguildofparkercounty.org](http://www.quiltersguildofparkercounty.org).

### July 17 — 26

*Monster in the Closet*. **Fridays and Saturdays**, 7:30 p.m.; **Sundays**, 2:00 p.m., Theatre Off The Square, 114 N. Denton St. Participants in the theatre's children's summer camp will present the production. Call (817) 341-8687 or visit [www.theatreoffthesquare.org](http://www.theatreoffthesquare.org) for additional information.

### July 19

Parker County Aggie Moms' Club 2015 Howdy Party: 5:00 p.m., Parker County Sheriff's Posse Clubhouse, 2201 Mineral Wells Hwy. Enjoy dinner, music and auctions. Proceeds will benefit Parker County Aggie scholarships. Visit [parkercomoms.aggienetwork.com](http://parkercomoms.aggienetwork.com) for more information.

*Submissions are welcome and published as space allows. Send your event details to [amber.browne@nowmagazines.com](mailto:amber.browne@nowmagazines.com).*



**State Farm®**

With competitive rates and personal service, it's no wonder drivers trust State Farm.®

Like a good neighbor,  
State Farm is there.®

**CALL FOR A QUOTE 24/7**

**Mader-Bagley Agency**

1916 Martin Drive, Weatherford, TX 76086-6701  
(817) 594-0241 - (817) 596-0241 - Toll Free: (800) 861-3579  
Kim Mader-Bagley & Craig Bagley





You can just have a pool, or  
you can have a BlueWater pool!

- ▶ WEEKLY SERVICE
- ▶ NEW CONSTRUCTION
- ▶ RENOVATIONS & REMODELING
- ▶ EQUIPMENT REPAIRS/UPGRADES
- ▶ PLASTER, TILE & COPING

- ▶ OUTDOOR KITCHENS
- ▶ FIREPLACES
- ▶ DECKING
- ▶ SALT & UV SYSTEMS
- ▶ WATER & FIRE FEATURES

**FREE FIRST 6 MONTHS**  
Weekly Pool Maintenance  
with each new pool build



VISIT OUR WEBSITE AND FACEBOOK PAGE FOR VALUABLE COUPONS!

Our showroom is located at 10424 FM 1902 • Crowley, TX

**817.297.7120**

[www.BlueWaterCustomPools.com](http://www.BlueWaterCustomPools.com)

## Start Losing Now! COMPLETE WEIGHT-LOSS SERVICES

- Diet Counseling
- Medication
- Skinny Shots
- B-12 Shots
- HCG Diet
- Program Discounts

Now Offering



Age Healthier...Live Happier!

BIO-IDENTICAL HORMONE THERAPY

*Enjoy Life Again!*

**Increases:**

- Energy, focus and mental clarity
- Lean muscle mass
- Bone density
- Libido and sexual performance

**Decreases:**

- Fatigue
- Depression
- Anxiety and irritability
- Joint pain



**Complete Allergy Services Offered:**

Testing, Compounding  
and Immunotherapy



LAKE GRANBURY  
INTERNAL MEDICINE  
AND PEDIATRICS, PA

**Dr. Penelope Aikin Jackson, MD, FAAP**

Dual Board Certified Internal Medicine and Pediatrics

2005 Rockview Drive • Granbury, TX • 817-579-1005





## In the Kitchen With Sadie deMerville

— By Amber D. Browne

When it comes to cooking, Sadie deMerville is inspired by her mother, Dianne Cockrell. With a Czech lineage, her mother has passed down a plethora of recipes to Sadie, including: breads, pastries and, of course, homemade kolaches. Sadie now shares her passion to bake and cook with her husband, Trey, and children, Carter and Chloe. “To see their smiles light up when they smell a sweet smell coming from the kitchen is heartwarming.”

Sadie often shares a story about her favorite recipe, buttermilk pie; her then-boyfriend Trey; and a five-pound Fox Terrier named Sophie. She had left the pie on a table to cool while they went out. Upon returning home, they discovered an empty pie dish on the floor, and Sophie’s stomach three sizes too big! “Needless to say, my buttermilk pie is liked!” **NOW**

### Grandmother’s Buttermilk Pie

*Crust:*

- 1 cup flour**
- 1/2 tsp. salt**
- 1/3 cup Crisco**
- 3 Tbsp. cold water**

*Filling:*

- 3 eggs, room temperature**
- 1 cup sugar**
- 2 Tbsp. flour**
- 1/2 stick butter, melted and cooled to room temperature**
- 1 cup buttermilk, room temperature**
- 1 tsp. Mexican vanilla**

**1. For crust:** Preheat oven to 350 F. Mix together first 2 ingredients; cut in Crisco with a pastry blender, until crumbly. Stir in water with a fork until dough forms.

- 2. Flatten ball of dough into a circle on floured waxed paper. Add dough to pie dish; fold overlapping dough into dish to form edge. Set aside.**
- 3. For filling:** Whisk first 3 ingredients until well-blended; add remaining ingredients and combine. Pour into pie crust. Bake 30 minutes or until firm.

### Easy Brisket

- Full-sized brisket, trimmed to your liking**
- 1 16-oz. bottle of Claude’s Brisket Marinade Sauce**
- 1/2 tsp. oregano**
- 1/8 cup garlic salt**
- 2 Tbsp. dry mustard**
- 1 Tbsp. paprika**
- 1 Tbsp. pepper, or to taste**
- 1 2-oz. envelope Lipton Recipe Secrets Onion Recipe Soup and Dip Mix**

- 1. Line a large roasting pan with enough foil to wrap brisket. Marinate brisket with Claude’s marinade for at least 30 minutes on each side.**
- 2. Mix together remaining ingredients; sprinkle on both sides of brisket. Wrap brisket in foil and tightly cover pan with foil. Bake at 225-250 F for 10 hours.**

### Mom’s Potato Salad

- 6-8 large red potatoes, washed and cleaned**
- 1 tsp. salt**
- 1 cup mayonnaise (Hellmann’s Light, Olive or Canola Oil)**
- 2 tsp. mustard**
- 2 large pickles, chopped**
- 1/2 medium onion, chopped**
- 1 2-oz. jar diced pimentos**
- 1/2 tsp. Lawry’s Seasoned Salt**
- 1/2 tsp. Morton Nature’s Seasons Seasoning Blend**
- 1/2 tsp. pepper**
- Paprika, to taste**

- 1. Add potatoes to a large pot; fill with water two-inches above potatoes. Add salt and stir until dissolved. Boil potatoes 15-20 minutes, or until done. Remove potatoes from pan and cool. Peel and chop potatoes.**
- 2. In a bowl, mix next 8 ingredients. Add potatoes and fold until well-blended. Top with paprika and refrigerate.**

### Cherry Jell-O Cake

*Batter:*

- 1 3-oz. box cherry Jell-O**
- 3/4 cup hot water**
- 1 15.25-oz. box yellow cake mix**
- 1 tsp. orange juice**
- 3/4 cup canola oil**
- 4 eggs, lightly beaten**

*Glaze:*

- 2 cups powdered sugar, sifted**
- 4 Tbsp. orange juice**

- 1. For batter:** Preheat oven to 350 F. Grease a Bundt pan.
- 2. In a bowl, mix together Jell-O and water; cool completely.**
- 3. In a large bowl, mix together remaining ingredients. Blend cooled Jell-O into batter. Pour into pan and bake 40-50 minutes (begin checking for doneness at 30 minutes.)**
- 4. For glaze:** Mix together all ingredients and pour over warm cake.



# Rio Mambo

TEX MEX Y MAS

## CELEBRATE SUMMER MAMBO STYLE



**ROJO  
RITA**



**TENDERLOIN MORITA**



**FRESH CEVICHE**

### **FORT WORTH**

6125 SW Loop 820  
(SW corner of Bryant Irvin & Loop 820)  
**817.423.3124**

### **COLLEYVILLE**

5150 Hwy. 121  
(Hwy. 121 between Hall Johnson & Glade)  
**817.354.3124**

### **S. ARLINGTON**

6407 S. Cooper  
(1/2 mile south of Sublett Road)  
**817.465.3122**

### **WEATHERFORD**

1302 S. Main  
(corner of South Main & Park)  
**817.598.5944**

### **BALLPARK**

2150 E. Lamar Blvd., Suite 120  
(SE corner of Lamar & Ballpark Way)  
**817.795.4555**

[www.riomambo.com](http://www.riomambo.com)

**1/2 OFF ONE  
BRUNCH ITEM**

with Purchase  
of an Additional Entrée

*Rio Mambo*  
TEX MEX Y MAS  
[www.riomambo.com](http://www.riomambo.com)

Present this invitation  
prior to ordering.  
Not valid with  
other offers.  
Expires 8-15-15.



**Please GOD,  
Bless America  
and  
Parker County, too!**



***First* National Bank**

220 Palo Pinto Street ♦ 139 College Park Drive

817-598-4900

[www.fnbweatherford.com](http://www.fnbweatherford.com)



MEMBER  
FDIC