

The Community Magazine Serving Burleson, Joshua and the Surrounding Area

Burleson NOW

M A G A Z I N E

September 2009

**On a
Mission!**

**Just
Havin' Fun**

**Time
Well Spent**

**Listening
and
Learning**

At Home With
**Bruce and
Lynn Basden**

FREE For Burleson Women With Back Pain...

Who've Been...

- Stressed Out With Kids Home All Summer
- Ignoring Your Painful Back Because You're "Too Busy"
- Aggravated Your Back Pain Came From "Summer Activities"

**FREE OFFER
EXPIRES
9/30/09**

"Most Valuable Women's Back Pain Information Ever Offered!"

Burleson — Because women's back pain can be very different from men's back pain, Dr. Pettke of HealthSource Chiropractic™ has created an opportunity for women of Burleson who suffer from the misery of back pain. An opportunity for women with back pain to have the unique nature of THEIR back pain evaluated, understood, and if possible, successfully treated.

Women's Back Pain Is Different From Men's

Unfortunately, and all too often, women with back pain are treated identically as men with back pain. The same exercises, the same treatments, and also unfortunately all too often...the same poor results, if the wrong treatment was given.

One clinically detailed look at a woman suffering with back pain and it's painfully obvious that when it comes to back pain, women's needs are often different from men's. Women move differently, are structurally built differently, and possess genetic strengths and weaknesses when it comes to their backs. One of the main keys in solving women's back pain, especially those women who have suffered through failed treatment, failed therapy, failed exercise regimens and failed rest periods...is addressing the many CAUSES of back pain that can be UNIQUE TO WOMEN.

Possible Causes Of Back Pain...UNIQUE TO WOMEN...

- Lifting children
- Pregnancy
- Childbirth
- Osteoporosis
- Fibromyalgia
- Stress
- Standing over countertops for long periods
- Smaller, weaker abdominal muscles than men
- Job related (desk jobs, nursing, caregiving)
- Exercise (running, cycling, aerobics, other sports)
- Gynecological conditions (endometriosis, PMS)

This is by no means an exhaustive list, but with all these potential causes of back pain for women, it creates a need for a unique and specific evaluation and treatment approach uniquely designed for each individual woman. Certainly many "cookie cutter" approaches will fall short for women suffering with back pain.

The Solution

So, in response to the overwhelming need of Burleson women to have a special and unique approach designed exclusively for each individual woman, Dr. Pettke of nationally-renowned HealthSource Chiropractic™ has created a special opportunity just for women suffering from back pain who desperately would like a personalized and customized approach to their back pain problem.

Not surprisingly, Dr. Pettke and HealthSource's approach involves a personalized FREE Detailed Initial Examination with any necessary X-Rays, where the possible causes of women's back pain will be considered. Our goal is to provide Burleson women with a relaxing, enjoyable, and worry-free experience.

And lastly, to ensure that all Burleson women can feel supremely at ease in receiving this special opportunity, Dr. Pettke is also offering the nationally-recognized HealthSource Chiropractic™ Triple Satisfaction Pledge... 1) HealthSource Chiropractic™ gets you in the **SAME DAY YOU CALL OR YOUR FIRST TREATMENT IS FREE!** 2) If you do in fact qualify for treatment and are not cheerfully greeted by our warm and friendly team, then your treatment is FREE. And 3) If you find a better opportunity for Burleson women suffering with back pain than this one here that Dr. Pettke is offering, they'll give you an entire week's worth of treatment for FREE.

No More Excuses...Kids Are Back At School

There is truly a ray of hope for women of Burleson suffering with back pain. You have no more excuses to put off taking care of yourself like you know you should, now that the kids are back in school. Don't waste this terrific opportunity to end your pain, feel great again and get back to moving and going through your day with the ease and grace you deserve.

FREE

Complete Initial Examination

"Find out about your pain..."

Whether or not you feel pain right now, let our team of doctors find out for sure with a 19-point, detailed initial examination (a \$189 value) that'll identify even the smallest of problems. We'll even throw in the X-rays if we feel you need them. Just bring in this coupon, and we'll take care of the costs.

THERE'S NO OTHER OBLIGATION. Just call **817-297-7100** and you're guaranteed to get in today! Once we track down your pain, we'll work on getting you back to doing the things you love—**FAST!** Make your appointment **TODAY! CALL RIGHT NOW! 817-297-7100**

P.S. Be one of the first 7 people to call and receive a \$10 massage. Start on your road to recovery today!

HS HealthSource™
Chiropractic & Progressive Rehab™

Dr. M. Brandon Pettke, D.C.
817-297-7100
1320 NW John Jones Dr.
Burleson, TX 76028



Specializing in Orthodontics for Adults & Children

FREE Initial Exam & Consultation • Interest **FREE** Payment Plan
Affordable Monthly Payments • Most Insurance Accepted

Special Offer
\$250 Towards Treatment with this coupon

New patients only. Offer good towards comprehensive treatment only.



Sheila T. Birth, D.D.S., M.S.
Diplomate American Board of Orthodontists

Charles Stewart, D.D.S.
Orthodontics & Dentofacial Orthopedics



**Straight Teeth
Fast with No Braces**

**State-of-the-Art
Video Games**

Saturday Appts.

**Early Morning
& Afternoon
Appointments**

Burleson
109 W. Renfro
Burleson, TX 76028
817-546-0770

www.professionalsmiles.com



First National Bank of Burleson receives BauerFinancial's *Five Star Rating*



Five-stars is
BauerFinancial's
highest "Superior" rating and indicates
that First National Bank of Burleson
is one of the strongest banks in
the United States!



BauerFinancial, Inc. has been analyzing and
reporting on the financial condition of the
nation's banking industry since 1983.
Through the years BauerFinancial
has earned the reputation of "the
nation's bank rating service".



First National Bank
of Burleson ... Locally Owned
Welcome Home!

www.FirstBurleson.com (817) 295-0461
899 NE Alsbury Blvd. & 740 SW Wilshire Blvd. Burleson, Texas 76028



Contents

September 2009, Volume 3, Issue 9

6



On a Mission!

12



Their Dream House

At Home With Bruce and Lynn Basden

20

ArtsNOW
Time Well Spent

22

SportsNOW
Just Havin' Fun

24

BusinessNOW
Don't Worry! Be Happy!

26

EducationNOW
Listening
and Learning



On the Cover:
This lovely arrangement
graces the coffee table
in the Basdens' home.

Photo by Terri Ozymy.

28 Around TownNOW

32 FinanceNOW

30 Who's CookingNOW

34 HealthNOW

Publisher, **Connie Poirier**
General Manager, **Rick Hensley**
Managing Editor, **Becky Walker**
Editorial Coordinator, **Sandra Skoda**
Creative Director, **Jami Navarro**
Art Director, **Chris McCalla**
Billing Manager, **Lauren De Los Santos**
Office Manager, **Angela Mixon**

Burleson Editor, **Melissa Rawlins**
Contributing Writers, **Faith Browning**
Sharon Robinson • **Jaime Ruark**
Betty Tryon
Contributing Editors/Proofreaders,
Pat Anthony • **Angel Jenkins Morris**
Jaime Ruark • **Beverly Shay**

Advertising Representatives, **Will Epps**
Shane Smith • **Rick Ausmus**
Linda Dean • **Steve Hansen**
Carolyn Mixon • **Linda Moffett**
Steve Randle • **Linda Roberson**
Eddie Yates • **Terri Yates**

Graphic Designers/Production,
Julie Carpenter • **Allee Brand**
Cherie Chapman • **April Gann**
Marshall Hinsley • **Arlene Honza**
Brande Morgan • **Pamela Parisi**
Jennifer Wylie
Photography, **Terri Ozymy**
Natalie Busch • **Jordan Mach**

BurlesonNOW is a NOW Magazines, L.L.C. publication. Copyright © 2009. All rights reserved. *BurlesonNOW* is published monthly and individually mailed free of charge to homes and businesses in the Burleson ZIP codes.

Subscriptions are available at the rate of \$35 per year or \$3.50 per issue. Subscriptions should be sent to: NOW Magazines, P.O. Box 1071, Waxahachie, TX 75168. For advertising rates or editorial correspondence, call (817) 477-0990 or visit www.nowmagazines.com.

Burleson

NOW

Editor's Note

Dear Readers,

It is that lovely time of year when we are suspended between summer heat and promises of coolness in fall. Each day is still bright and colorful, but the mellow moments last longer — even on September 12 and 17 and 27, when you have lots of fun to juggle! On the 12th, Joshua hosts its City Wide Garage Sale all day long; that evening, the Taste of Burleson offers “foodie” fun at the Re/Max Parking Lot south of the B&G Plaza. The next Thursday, play hookie for a day of golfing at Hidden Creek to benefit the Meals on Wheels. The following Sunday, if you still have energy, you can go dancing at the Crystal Heart Gala, which benefits Huguley Memorial Medical Center. I encourage you to also spend your philanthropic dollars with the many organizations in the area where a mere \$25-\$50 could feed a family, buy a new toy for a child, help pay an electric bill, ease medical bills or fill a gas tank.

Melissa Rawlins
BurlesonNOW Editor



Woolard's
Custom Jewelers

Celebrating 30 Years
In Making Friends &
Doing Business In Burleson.

*Melodies In Motion
SEIKO Clocks
It's not just a Clock,
It's a Home Entertainment Center.*



Fine Jewelry • Diamond Setting
Jewelry Repair • Special Order Work
Custom Designing • Laser Welding
Watch Repair

Jeweler By Trade. Artist By Heart
Bob and Carol Woolard

437 S.W. Wilshire Blvd.
Burleson, TX 76028 817-295-6361

POYFAIR Quality Remodels

*Building & Remodeling
Quality Homes in Mansfield
for the Past 10 Years*

Bathrooms & Kitchens

**20%
OFF**

All Radiant Barrier
this month



We are your solution to home remodeling

- Additions
- Wood & Tile Floors
- Granite Countertops
- All Types of Roofing
- Decks
- Fences — Wood/Ornamental
- Storage Areas
- Painting — Interior/Exterior

817-368-1802

No job too small.

mcmc

mike carlson motor co.

**If you need
financing...
We'll Get
You There.**



CARFAX

Certified Dealer



Joy shines from Otis Gillaspie's face as he plans next month's trip to Mumbai, India. Once there, he and Mark Mitchell will install water filtration systems, which will deliver pure water to approximately 6,000-8,000 people per day per facility. Otis serves fewer than that from Texas Drinking Water Systems, the business he operates on Highway 174 between Joshua and Burleson, but then, most people in Johnson County have sanitized water flowing through their own plumbing pipes. Not so in Mumbai.

"The people in the slums of Mumbai have to go to the river to get their water," explained Otis, who greatly enjoyed the process of designing the two-story concrete-block facilities in Mumbai where the people will be able to serve themselves fresh water, free of parasites. "There will be 12,000 gallons of clean, pure water if we can help it!"

Working with Dwayne Weehunt's Sower of Seeds Ministries, as part of Gateway Church's international outreach project, Otis has been asked to provide the water technology in Mumbai. He is the right man for the job, having taught himself water chemistry under



On a Mission!

— By Melissa Rawlins

the careful mentorship of Gary Mitchell, who sold his business to Otis in 2004. Now, Otis enjoys seeing people's health enhanced by drinking pure water.

"In the Mumbai project, the water is fairly brackish, and I'll pull out the salts with reverse osmosis and then feed it into the holding tanks on the upper floor," Otis said. "We'll have six downspouts on each side going to the lower floor. The people will have a mechanism where they can open the water and fill their containers on each side. The government provides containers, but they don't provide water."

The Indian government also does not provide the Gospel — an additional gift Otis shares when he joins other missionaries to help provide fresh water to sick people in places like Mexico, Honduras and the Ukraine. "The pastors do talk about the water. It's a tool they're able to use to further the Gospel," said Otis, who is an ordained minister with the Lighthouse Church of Burleson, which his mother, Gloria Gillaspie, founded during the '70s. In 1990, when Lighthouse Church sponsored a Ukrainian family, Otis did not know that the 17-year-old boy named Dimitry Bodyu would learn English, as well as the Gospel and then return to the Ukraine as a missionary at the ripe old age of 20. "We've set him up in the water filtration business there," Otis said, "and that's how he supports his 55 churches, plus one in Alaska and one in Israel. And he's only 36 or 37!"

Even today, the Ukrainians don't have money. The cost of living is almost the same as here, but a person on pension only gets about \$20 per month. Dimitry uses water businesses to support his Dimitry Bodyu Ministries International. We put those systems in over there about 10 years ago. He was able to take that and build on it. His businesses have given jobs to people in three different cities. He probably delivers over 10,000 water bottles a month.

"We installed a well pump in Honduras back in the spring, another mission outreach through Gateway that rescues orphans and 'senior orphans,' who are people that reach a certain age where they're not able to make money and their families kick them out," explained Otis.

"I do this because I believe that when God gives you talents and abilities, it's our responsibility to use them. He gives them to us to use for our own living, but also for others who are less fortunate. For me, it's also a heart issue. I have a calling toward whatever I can do to further the kingdom. In India, for example, when 35 percent



BlueWater

POOLS L.L.C.

You can just have a pool, or you can have a Custom BlueWater Pool!

- ▶ NEW CONSTRUCTION
- ▶ RENOVATIONS & REMODELING
- ▶ EQUIPMENT REPAIRS
- ▶ WEEKLY SERVICE
- ▶ PLASTER, TILE & COPING

- ▶ OUTDOOR KITCHENS
- ▶ DECKING
- ▶ SALT SYSTEMS
- ▶ WATER FEATURES
- ▶ EQUIPMENT REPAIRS/UPGRADES

One-Time Cleaning
Drain/Acid Washing
Seasonal Start-up
Filter Cleaning



817-297-7120

www.BlueWaterCustomPools.com

Irresistibly Fresh! Located Behind Olive Garden!

Charley's
GRILLED SUBS

Made to Order
Right Before Your Eyes!

Grilled Subs • Gourmet Food • Lemonade

Buy Any Large Sandwich and Fries
and Get Any Regular Sub
for \$1.00!
With Purchase of drink, sub, and fries with this ad. Expires 9/30/09.

TRY OUR NEW CHARLEY'S TO GO!

1185 N. Burleson Blvd (in Gateway Station, behind Red Lobster) • Suite 213 • 817-426-9922

www.colemanbackyards.com

Beat the Heat!
With a Coleman
Custom Patio Cover

- Sun Rooms
- Patio Covers
- Screen Rooms
- Hot Tubs
- Replacement Windows

Coleman
Bright Ideas for
Your Home Since 1958.
Garden Rooms • Patio Covers • Hot Tubs • Supplies

1419 Hwy 114 West in **Grapevine • 817 481-4288**
4820 SE Loop 820 in **Fort Worth • 817 572-0004**

of their children are dying from waterborne diseases, they're looking for help. When you can help the people, and they see that you can save their children, they'll listen to your Gospel."

A favorite memory Otis recalls passionately stems from the work of Todd Haddix, a partner in his business who has since passed away. "He had such a tender heart for those people in the Yucatan," said Otis. "In a village in the jungle of Yucatan, everyone was sickly because their water supply was full of parasites. If able to raise enough money with crops, they could go to Cancun and get medication to help with parasites. Then they'd go back home and get sick all over again. We went down there and met with the missionaries and put a reverse osmosis



system into the church. People could come get water from the church. Pretty soon they started seeing how that was making them healthy. As they saw that it was saving them, people started coming to the church. Pretty soon the church was full, and the witch doctor was out of business!"

By 2015 — when Otis and his wife, Sara, could likely be grandparents — Otis could also be a regular world traveler, introducing fresh, clean water to children and adults around the world. Pointing to a picture of African children

Dive into Summer

With A Healthy Smile



(l to r) Dale Martin, D.D.S, Drew Jamison, D.D.S.,
Casey Stroud, D.D.S., Dr. Daniel J. Bekish, D.M.D., M.S.



- Additional Training In Children's Dentistry • Kid Friendly Environment • Combined Over 30 Years Experience • Offering Oral, IV & General Sedation • One location for all of your child's dental needs • Board Certified Pediatric Dentists & Orthodontists
- Traditional orthodontics for both children & adults • Invisalign provider



Burleson
Pediatric Dentistry
& Orthodontics

1161 S.W. Wilshire Blvd. • Ste. 110 • Burleson, Texas 76028
817-447-7474 • www.burlesonkids.com

Most Insurance Accepted • Accepting Medicaid



New!
Online
Ordering and
Delivery

J.J. Mocha's
Great Coffee • Great Food

Gourmet Espresso, Coffee & Tea, Blended Ice Coffee,
Smoothies, Breakfast, Lunch, Desserts, Free WiFi,
Gift Cards, Internet Terminals, Private Meeting Room,
Open Mic Thursdays.

Visit www.jjmochas.com to order online

**\$1 Off
Breakfast
or
Lunch**
With Coupon

**Buy One
Get One
Free**
Gourmet
Coffee, Tea or
Smoothie
Free drink must be
equal or lesser value.

108 S. Main Street, Burleson, TX 76028
(Burleson Renfro & Eldon in Old Town)
(817) 426-0300



Phoenix Custom Homes & Remodel Inc.

Quality custom homes from **\$62 per Square Ft.** • Green Builder

Here are just a few Amenities:

- Triple low E windows that exceed Energy Star rating
- Granite counter tops
- 14 seer HV AC
- Furniture quality custom cabinets
- Crown molding
- Wood or comparable flooring
- Zip wall system
- Name brand Energy Star Appliances
- Thousands of plans to choose from or bring your own

Mortgage rates are lower than they have been in years. Now is the time to let the folks at Phoenix Custom Homes & Remodel help you with a remodel to add value and appeal to your existing home, or to have the Custom home of your dreams constructed. We are a full-service builder with the ability to help you from site location through the finished home. Included in the prices is a design consultant to help with the many choices we offer. We can build on your site or we have several communities to choose from in town or in the country. Our mission is to provide our clients with a quality, energy efficient home in a timely fashion.

Phone 817-790-0011 • New web site is coming soon.

kneeling to the ground to drink water from a dirty pathway, Otis said: "Ninety-five percent of all diseases are waterborne. In America we don't experience that so much because technology allows us to sanitize water so we're not getting sick immediately."

The Mumbai project came along right after Otis chose to commit to the responsibility of pastoring at Lighthouse Church. "Ordinarily in business I would have thought about the money I could make on this. They're going to have to build a lot of these facilities in those slums. Although I can't afford to buy all this equipment, I can donate my time and pass on the equipment at cost. The goal is to get as many water filtration facilities functioning as we can,

"I do this because I believe that when God gives you talents and abilities, it's our responsibility to use them."

to improve their water supply and teach them how to keep their water potable."

More than anything, Otis is following the natural progression of his family's footsteps. "My family goes back to the 1800s in Burleson. We're related to the Renfros; our roots go deep here. Most of my mother's family, the Lewises, are involved in missionary ministry in some form or another. My grandfather was always involved in helping the local church and supported the local ministries," said Otis. "What I would like to do — not necessarily a vision from God — would be to support water missions around the world full time. I'd like to help people establish business and commerce throughout the world. Seeing the transformation in an entire village just due to water — in the Yucatan, for example — is fascinating and gratifying." **NOW**

Concerned about your baby's development?

We can help!

**Serving infants
and toddlers
from birth to
three years old**

888-754-0524



At Home With

Bruce and
Lynn Basden


Their Dream House

— By Jaime Ruark

The sprawling stone and brick Mediterranean-style home of Bruce and Lynn Basden is the third house they have built, and the one they plan on calling home permanently — quite a claim for a family, which has moved about a dozen times. With its beautiful landscaping, inner courtyard, guest house and pool, this 4,000-square-foot Tuscan villa, built in 2007, is the house of their dreams.

Bruce, owner of Basden Steel and a Burleson native, and Lynn, who grew up in Joshua, have enjoyed 30 years of marriage. “We’ve always been in Burleson, but we’ve moved around a lot,” Lynn said. Their previous residence began to feel too large once the three older of their five children began leaving home, so Bruce and Lynn decided to downsize. “My dad was a master bricklayer and he helped us build our previous house, but was unable to help us with this one. We tackled this one by ourselves, and I stayed up here during the day in a little trailer, overseeing everything. It was quite a job,” Lynn added.

Bruce and Lynn found out they work well together as they



began the building process. "Bruce handles the construction and the structural things, of course, and the interior stuff I get to decide," Lynn said. Bruce added, "The whole house is suspended on steel beams. Ground is really active in Burleson and suspending it [the house] keeps it from moving." Travertine marble floors run throughout the kitchen and living areas, perfect for wet feet coming in from the pool. "We really wanted the house to be open and family-oriented," Lynn explained. "We knew we'd have a lot of traffic in and out with the kids and because we like to entertain."

The Basdens have included a separate guest house in their last two homes, an important necessity due to their many visitors. The guest house, decorated in "I Love Lucy" memorabilia, offers a bedroom, bath and small kitchen area. "Bruce has a detailing service in Romania and a plant in Oklahoma, so sometimes we'll have workers come for training and stay 30 days at a time," Lynn said. "It also comes in handy if our church needs a



Go Nuts!

MANSFIELD PECAN FESTIVAL
A HomeTown Tradition

with us at the Mansfield Pecan Festival!
Friday, Sept. 25th through Saturday, Sept. 26th, 2009

Come to Town Park and Katherine Rose Memorial Park and enjoy lots of family fun including: Pony Rides, Petting Zoo, Storytelling Tent, Bounce Houses, Climbing Wall, Face Painting, Carnival Rides, Art and Craft Vendors, Festival Style Foods, Beer and Wine Tent, Live Music and more!

Free Admission!
Parking and Shuttle Buses are also free!

September 25th
Pre-Festival Concert at Town Park
"King Creole Band" 7:00pm - 10:00pm
Pre-Festival Carnival Rides at Hardy Allmon Park
6:00pm - 11:00pm

September 26th
Pecan Festival at Katherine Rose Memorial Park
9:00am - 6:00pm
5K run, 1K family run/walk
Carnival Rides at Hardy Allmon Park
11:00am - 11:00pm
Post-Festival at Town Park, Concert by
"The Music Place & Arts Conservatory" 7:00pm
and Outdoor Movie "Enchanted" 8:00pm
For full details go to:
www.pecanfun.com

Methodist HEALTH SYSTEM
Mansfield Arts
MANSFIELD
Medical Center
Best Western
TRULY HOLEN
ILC



place to put somebody for a few days.”

Gorgeous woodwork is found throughout the home, from hardwood flooring to the dark-stained cabinetry. “Our cabinet guy built and finished everything in his shop and then installed them. There was no onsite staining or finishing, which is pretty remarkable,” Bruce noted. The cabinets in the living room are a unique feature, swinging open to reveal a long closet for their Christmas trees, fully decorated and wrapped. “I got so tired of pulling everything out every year and then taking everything down again, especially since I rarely get any help,” Lynn said with a smile in Bruce’s direction. “I love Christmas trees, and it’s just a lot easier this way.”

As many home builders and decorators can attest, some projects start small, only to evolve into a long and arduous

process. The glass-paned doors leading to the formal dining room were just such a project. Lynn gave each member of the family their own pane to paint, a creative way to imbue the house with their personalities. “After we got the panes done, I had to take them up to the church to bake because they were too big to fit in my oven. Then I had to drive them to Fort Worth to the door company to have them put in, trying to make sure they didn’t break,” she recalled. “I love it now, but at the time, all I could think was, *Why, why, why did I do this?*” The panes, decorated with flip-flops, fish, flowers, pelicans and suns, are now a fun accent to the red walls and patterned ceiling. A hutch holds some of Lynn’s collectibles, including her mother’s Precious Moments figurines.

The living room fireplace, made from a unique fossil stone



SCHOLARSHIPS AVAILABLE for bilingual education majors

- Transfer to Texas Wesleyan and begin your future now!
- Sit for the Texas state bilingual education certification exam upon graduation.

To find out more about how to begin coursework in your major, visit www.txwes.edu or call:

In Burleson:
130 E. Renfro St.
Burleson, TX 76028
817-295-7373

In Fort Worth:
1201 Wesleyan St.
Fort Worth, TX 76105
817-531-4422



**TEXAS
Wesleyan
UNIVERSITY**

Step up to a
4-year degree
and promising
career

EXCELLENCE WITHIN REACH



See our NEW facility
here in Mansfield.

Uncover Your Natural Beauty Within

MANSFIELD
cosmetic surgery center

Cosmetic Surgery:
Silicone Breast Augmentation
Breast Lift • Breast Reduction
Tummy Tuck
Brazilian Butt Lift
Liposuction
Body Contouring
Facial Rejuvenation

**Aesthetic Services
& Skin Rejuvenation:**
Botox® • Juvederm®
Restylane® • Perlane®
IPL Photo-Facials
Microdermabrasion
Facials • Chemical Peels
Obagi & SkinCeuticals



Michael L. Thornton, D.O., FACOS
Board-Certified Cosmetic Surgeon
Diplomat American Board of Cosmetic Surgery

550 N. Walnut Creek, Suite 120 • Mansfield, TX 76063
817-477-9000 www.mansfieldcosmeticsurgery.com

**Thank you Burleson for 24 years of trusting our family to meet your child care needs!*

High-quality child care at a price every family can afford!



Child Care Services (CCS) has awarded the highest quality rating of **4 stars** to all locations for the best **TEACHERS, LEARNING ENVIRONMENT & CHILD DEVELOPMENT PROGRAM!**

Join us today! Ask for a free trial day!

Now Enrolling Infants-12 years • Full or part-time space available • Before and after-school program for all campuses • Tuition discounts for City, Military and ISD employees
Abeka Christian Curriculum

Kids Kampus
where kids learn!

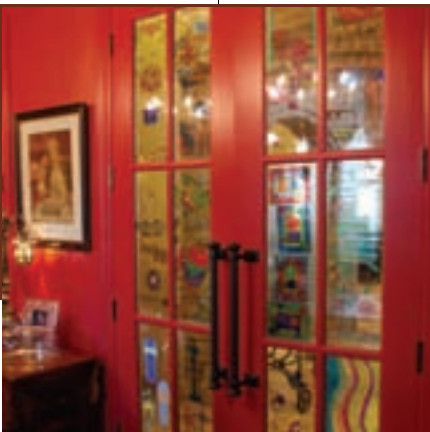
Newton Street (behind Golden Corral) 817-295-7737
Vicksburg Lane (behind Sonic-Alsbury) 817-295-7521
Summercrest & 731 (NOW OPEN!) 817-484-2342

Renfro Street (Near Branson Elem) 817-447-1287
Joshua (HWY 174-Mountain Valley) 817-295-6871
Cleburne (Euclid & Granbury) 817-558-8120

Punkin Patch
DAYCARE
where kids love to play



FREE Registration for the family.
expires 9-30-09.



surrounded by more stone and brickwork, also presented a challenge when it was being installed. "The [fossil] stone did go all the way up to the ceiling at first. There was scaffolding holding it and the builders left for the day," Lynn said. "About 15 minutes after they left, we heard this huge crash. The whole top section had fallen off and broken pieces of stone were all over the floor."

Opposite the dining room, double doors open to a front room which is home to Bruce's college memorabilia, including his trombone from Aggie band days. Theater chairs front a large flat screen and cabinets with glass fronts

hold shelves of souvenirs. Following in their father's footsteps, the boy's game room and bedrooms are also covered with the maroon and white Aggie colors, from rugs and pillows to wall hangings. Hanging with pride in the game room is a picture of the Basdens' older sons, Kyle and Daniel, with retired Texas Rangers pitcher Nolan Ryan. "When they were little, their grandma took them to the game and whistled for Nolan Ryan to come over for a picture. They were pretty excited," Lynn said.

The master bedroom, complete with a baby bed for visits from grandchildren, has a massive family photo gallery wall.

Where the Journey Begins

CALVARY CHURCH

First Service • 8:30 am
 Sunday School • 10:00 am
 Second Service • 11:00 am
 Spanish Service • 1:00 pm

www.calvaryftw.com | 700 McPherson Road • Fort Worth, TX 76140 • 817.293.7103



Robert H. Shaw, MD



Brenda Ziegler, FNP



Amber Hyde, MD

Shaw Medical Center

An Affiliate of Plaza Medical Center of Fort Worth

Accepting new patients in need of primary care: coughs/colds, physicals/preventative medicine, immunizations, women's services, acute care and everything in between.

Annual Physicals • Well-woman Exams • Immunizations
Pediatrics (infants & up) • EKG • X-rays • Blood Work

1571 SW Wilshire Blvd • Suite 500 • Burleson • 817-295-1121

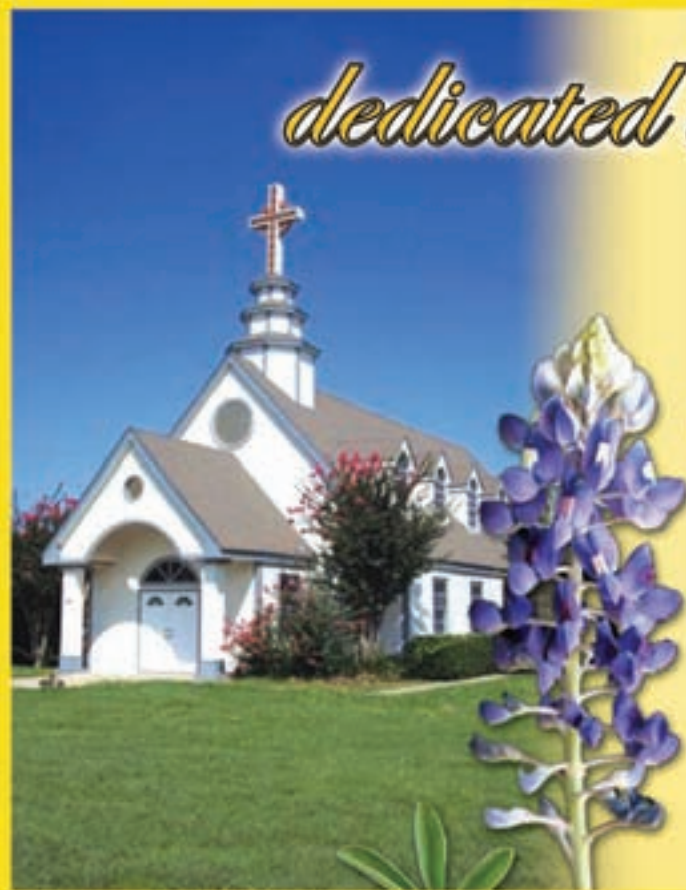
dedicated to families

Lucas & Blessing Funeral Home & Cremation Services

518 South West Johnson Avenue
Burleson, TX

817-295-9000

Lucas-Blessing@familyowned.net





A hutch below the pictures contains some of Lynn's miniature shoe collectibles, a tradition carried on from her mother, as well as baby quilts made by her grandmother. "We keep a lot of stuff in my family," she smiled. On another wall hangs a shadow box containing one of Bruce's favorite conversation pieces — a mourning wreath. "In the Civil War era, when a young lady would die, they would cut a lock of her hair and put it in the center and then all her friends would cut locks of their hair and make a wreath out of it. It's pretty unique — and maybe a little spooky," he explained with a laugh.

Off the kitchen is Lynn's utility room, complete with a table for sewing and crafts. "Our son, Simon, and I got



irritated that she had a craft room and we didn't, so we built one for ourselves," Bruce joked. The recent addition, located to the side of the driveway, was made to resemble a train depot.

"It's a knock-off of the depot at College Station," he added. "It's going to be a hobby room [where] Simon and I [can] build our model trains."

The Basdens have built a beautiful house, one they intend to call home for many years to come, as evidenced by the cornerstone near the back door, engraved with their names, the date and the scripture, Joshua 24:15. "It took us about a dozen tries," Bruce said, "but we finally have our dream house." **NOW**

Use Your First-Time Homebuyer Tax Credit, Up to \$7000, Toward Your Down Payment, Etc.!!!* Don't Delay...Call Today!!!



Samie Campbell
Branch Manager

308 E Renfro Suite 206
Burleson, TX 76028

Who qualifies as an eligible first-time home-buyer for the up to \$8000 tax credit? Generally, any taxpayer that has not owned a home as their primary residence in the last three years qualifies, although other conditions may apply.*

If you think you may be a candidate for the tax credit, then now is especially the perfect time to purchase your dream home. Rates are low and house prices are cheap. It doesn't get much better than this...but the tax credit goes away as of December 1, 2009!!!

As a courtesy for closing your loan with me, and because I have had a tax business for 10 years, I will gladly prepare the tax documents necessary to get the tax credit back as fast as possible at no extra cost. How's that for an added bonus?

Phone (817) 447-4443
Fax (817) 447-3339



www.buildamortgagenow.com



Seal Your Home — Save Money



Seal and insulate your attic or crawlspace with BioBased Insulation® —

- Reduce air movement
- Keep conditioned air inside
- Increase energy efficiency
- Reduce heating and cooling costs

Retrofitting your home with BioBased Insulation® can help you qualify for the new tax credit for energy-efficient upgrades (up to \$1,500). Agape Construction, a certified dealer trained in building science, can evaluate your home and recommend energy-efficient improvements.



Agape Construction, Inc.

972-571-3443 | agapetexas@yahoo.com

Ask about our September Specials!

Lydia Wilson, R.Ph. Wayne West, R.Ph. Dan Gardner, R.Ph.



NEED to TALK ...

... about over-the-counter medicines,
as well as prescriptions?

Our pharmacists are always available to answer your questions!

No Prescription Insurance?

We offer **Best Value** cash & carry plan.

- Convenient drive thru
- No long waiting, old-time friendly service
- Take insurance & Medicare-D cards
- Compounding Specialists
- Locally owned
- Co-pay same as chain stores

Dan's Best Pharmacy
3521B SW Wilshire in Joshua
(817) 484-3267



West Best Value Pharmacy
124 West Renfro, old-town Burleson
(817) 295-6128

www.mybestvaluerx.com

www.sunsetwinery.com

recaptured and up

Check our
newly updated website
frequently for exciting
events at the winery
and other interesting
information.



The Place for Fine Wine & Fun Events

Open Thu - Sun, Noon - 7 PM

1535 S. Burleson Blvd.
Burleson, TX 76028
817-426-1141

FALL is in the AIR!

Check out our new arrivals
UT, Texas A&M and TCU jerseys, collars and leads!

Happy Tails
complete pet care & boutique

High school spirit bandanas,
and a large selection of
Halloween costumes!

Mon., Tues., Thurs., & Fri. 7:30am to 6:00pm Wed. & Sat. 8:00am to 5:00pm
113 NE Johnson Ave., Suite 300 • Burleson • (817)-529-9993 www.happy-tails.net

Blooming in Burleson for over 36 Years

Flowers by Fran
817-295-3501 • 817-295-7361
248 S.W. Wilshire
Burleson, TX 76028
www.flowersbyfran.net

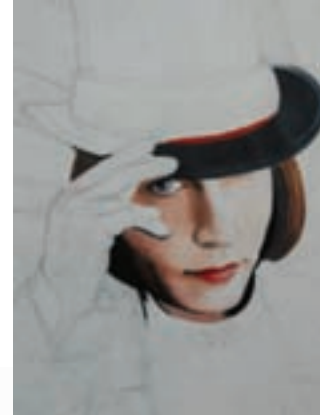
When Only The Best Will Do
ditchbridetallas.com

Look for us at the *Memorabilia Bridal Extravaganza*
September 20 at the *Memorabilia Civic Center*

ARTS
NOW

Time Well Spent

— By Melissa Rawlins



The image of doe-eyed Sora from the video game *Kingdom Hearts* is the first character that inspired Monica Sullivan to draw in the Manga style. She was 11 years old. Now Monica is 16, has stopped playing video games and has portfolios full of different types of doodles in ink, graphite and colored pencil. None of her drawings have names. “I never name my stuff,” Monica said. “I describe my pictures by thinking of the feelings. It kind of seems like they are not supposed to have names.”

As she flips through her portfolios, there is a startlingly photographic pencil drawing of a girl’s face, whose piercing eyes make up for her lack of hair. There is a sweet image of trees without individual leaves, surrounding a barn, next to a lake with two people rowing a boat. In Monica’s words, this picture is warm and inviting, less controlled in a way and a little freer. “I was getting frustrated with myself for always drawing realistically, with painstaking detail,” she said. “I wanted to do something a little looser.”

There is a well-proportioned drawing copied from a *TIME* magazine photo of a handsome Orlando Bloom squatting in cowboy boots. “I did that for my mom on Mother’s Day,” Monica said. Another piece features the big cartoon cat, Garfield, who has lost his tail and is thinking, ‘You really can work it off!’ Monica copied that cartoon for her dad on Father’s Day because of the humor. The reason she chose to draw Manga characters, however, was because she thought the eyes were absolutely beautiful.

“Manga (mahn-huh) is the proper way to pronounce it, but nobody says that. You have to be a really devoted person to use proper pronunciations, and I’m not,” laughed Monica. “I really do enjoy Manga (main-guh). I prefer my Manga drawings to have a story and not just be action. Also the proportions are very neat. They’re either tall and graceful or cute and cuddly.”

The fun, for Monica, is the opportunity to focus on the positive in whatever subject she chooses to draw. “I love drawing for what it is. I love being able to capture the beauty in a thing. That’s something I love about art. You can just take the beauty and leave out everything else,” said Monica, who likes to draw while sitting cross-legged on her bed and keeps her multiple portfolios in several different places. “I have

a bad habit of not finishing things. I start on a big picture or I like to do portraits, and I’ll start on the stuff that’s most interesting to me — the eyes and the facial features, and I’ll get to the hair and I’ve lost interest. So I have a lot of faces floating [around].”

Because Monica gets artist’s block often and sometimes goes weeks without drawing, she has questioned whether she’s a real artist. However, those who have seen her work have no doubt. Monica’s grandmother, Ruth Wilkinson, commissioned her to draw the cover for her new book, *The Eucharist: The Body and Blood of Christ or Only a Symbolic Reminder of Christ?*

“The book is about our Lord’s divinity. I was drawing sketches for the book during our mass. At the consecration,



ARTS NOW

the priest holds up the host. I was going to draw his hands holding the hosts. I'd drawn a bunch of thumbnail sketches to figure out how to do the lighting and I showed them to my grandmother and she said, 'Well, you can't see all his fingers. You'll have to do a different one.' I tried. It just wasn't working. In the end, I had to go back to the original one from the thumbnail. She said, "That's so wonderful. His fingers are so perfect." I never did tell her it was the same one she'd said no to before. It was stressful getting everything worked out for the book cover. I prayed a lot throughout the whole thing. It turned out well, and I think it really was something that God wanted me to do, for His sake. I'm glad I did it, and it was good for me and I really learned a lot from doing it."

One day, Monica wants to go to a liberal arts college and major in art. For now, she will study hard as a high school freshman. Last year, as a boarding student at Immaculate Heart of Mary School in New Hampshire, still run by teaching nuns, Monica studied art once a week. "I had a great art teacher I could go to any time I wanted help or suggestions on my drawings.

"I've been really blessed with my teachers. There are a lot of people I know who have never had lessons and are so amazing. I can't claim that," Monica grinned. "Ever since I was 8, I've had awesome teachers. My best teacher was Mrs. Milburn, who was part of our homeschooling group, which included people from Burleson, Ft. Worth and Arlington. She lived in Arlington and had weekly classes for eight teenagers. I've never known anyone like her who could explain art so well and was just willing. She would let you arrange a two-hour session with her anytime you wanted to. I thought that was amazing, because she had her own family and still took time out for us." Time well spent. **ARTS NOW**



Elite Earth Energy

Renewable Energy

Commercial • Residential
Wind Turbines & Solar Modules




Be your own electric company & let the government pay for it!

5kW Wind Turbines

\$267.84 Average 1-month Savings

Retail Cost	\$28,453.00
Federal Tax Credit 30%	-\$8,535.90
After Credit	\$19,917.10
New Law 50% Depreciation 1st Year	-\$9,958.55
Cost to You	\$9,958.55
<small>(Installation Avail.)</small>	<small>(Average Pay-off: 17 months)</small>

*Additional 30% Franchise Tax Incentive. (Check with your accountant)

5kW Solar Modules

\$140.00 Average 1-month Savings

Retail Cost w/ installation	\$40,000.00
Oncor Rebate (cash) 2.46/watt	-\$9,225.00
After Rebate	\$30,775.00
Federal Tax Credit 30%	-\$9,232.50
After Tax Credit	\$21,542.50
New Law 50% Depreciation 1st Year	-\$10,771.25
Cost to You	\$10,771.25
<small>(Installation included)</small>	<small>(Average Pay-off: 17 months)</small>

*Additional 30% Franchise Tax Incentive. (Check with your accountant)



Our mission is to bring innovative solar and wind energy solutions in simple systems to end users.

384 SW Johnson Avenue • Burleson

Call Today for a Free Evaluation:

817-295-5574

Sports
NOW

Just Havin' Fun

— By Jaime Ruark

Remember the first time your dad taught you to catch a fly ball? Can you recall the time your brother slid into home plate in a cloud of dust to score the winning run for your team? Is one of your favorite memories being tagged out at first by your little sister while your grandmother and mom laughed and yelled their support from the sidelines? Family fun in the sun is what the summer months are all about, and playing a sport with family and friends can create memories that will last a lifetime.

Coby Quisenberry and his family have been a part of Burleson life for many years. Along with his father, David, and his brother, Brad, Coby helps run Gene Harris Petroleum Inc., as well as a recently acquired T-shirt screen printing company, The Chile Red Company. "My granddad has been in the petroleum business since '52," Coby said. "Now, with the two businesses, we stay pretty busy." The business is clearly a close-knit, family affair, so it is easy to understand how those relationships can carry over from work to play. When the men are not hard at work, they are hard at play together in a local softball league at Hidden Creek. The team name is, of course, Gene Harris Petroleum.

Coby grew up playing basketball in high school and continued to play recreationally with his family until, he said with a laugh, "We just got too old. We all used to play basketball together on Sundays for probably 30 years. Then when we got too old to be doing that, we started playing softball." Sports is a tradition in their family. Coby's father, David, was a high jumper and played basketball as well, and now Coby is excited to watch his 12-year-old daughter, Byrclin, and 7-year-old son, Cason, begin their own sporting tradition. "She plays basketball and will be doing volleyball in the fall, and my son plays both baseball and basketball," he added with pride.

Team Gene Harris Petroleum might, at first glance, be



considered a long shot when they take the field. "Most of the time we're the oldest guys out there," Coby admitted. Brad added, "Our average team age is off the charts compared to the other guys. It's pretty funny when I tell a guy, 'That's my dad out there on first.' They usually don't believe me. He's one of our best players, too." Looks can be deceiving, as many of the younger teams playing against Team Harris soon find out. "A lot of the time, we end up winning," Coby smiled. "Dad is always saying, 'I'm getting too old for this!' But we all are just having too much fun to stop."

Coby is the team's second baseman, Brad plays short stop and David covers first base. "It's just us, our family and some of our friends out there having a good time," Coby said. They play once a week, but never practice. More wins than losses is most likely the result of years spent playing together, as well as the fact that these men are just out there to have some fun. "We barely make it through a game," Brad joked. "We used to care a little more when we were young, be a little

Sports NOW

more competitive. Now we just go out there and have a good time," Coby admitted. "We pretty much work all the time, so the softball games once a week are our little getaway."

Family and friends enjoy coming out to watch the guys in the blue jerseys

having fun on the field. "My wife, D'Liss, and my kids will come out and watch. I think my son has a good time watching his dad," Coby said.

One of the team's most loyal fans is Coby's grandfather. "Our granddad is 85, and he

tries to come to all our games, especially now that our grandma has passed away," Brad said. "The first game he came to, we ended up winning. Everybody signed the game ball and we gave it to him, and he keeps it on his desk." The guys also printed up a special team jersey for their granddad that he wears to all the games. "We make our own jerseys, since we have the printing company," Coby explained. "He'd probably wear it every day to work if he could," Brad added with a laugh.

Coby and his teammates prove that having a winning record on the softball field is not just about seriousness, skill level or age; often the best times can be had when guys come together and just enjoy the game and the camaraderie. "We just go out there and have a good time. I guess we're just dumb enough not to worry about getting hurt," Coby joked. "That's what it's all about. We don't take ourselves too seriously. We're just there to have fun." You can never get too old to have some fun. **NOW**





Elite Floors

Brand-Name Flooring Products
Chamber of Commerce Business of the Year

**FREE ESTIMATES
SPECIAL FINANCING AVAILABLE**

Come see us at our showroom or visit our website: www.elitefloors.net
Mon-Sat 8am-6pm
Mohawk Color Center

Coupon Must Be Presented To Be Valid

Carpet instock
Mohawk
with Upgraded Pad

2⁸⁰
installed

Expires 9/30/09

Coupon Must Be Presented To Be Valid

Engineered
Wood

6⁹⁵
Sq. Ft
Installed

Oaks, Maples, Hickory

Expires 9/30/09

Coupon Must Be Presented To Be Valid

Earth Werks
Vinyl Tile

3¹⁰
Sq. Ft
Installed

Expires 9/30/09

Insurance Claims Welcome • Insured • No Interest Financing



Elite Construction



Complete Kitchen and Bathroom Remodels

- Kitchen
- Bathroom
- Roofing
- Windows
- Stone Veneer
- Painting
- Electrical
- Plumbing
- Countertops
- Granite
- Cabinets
- All Flooring
- Tape & Bed
- Sheetrock
- Silestone

COUPON MUST BE PRESENTED TO BE VALID

FREE

STAINLESS STEEL SINK WITH
SILESTONE INSTALLED.
Granite Countertops Fabricated & Installed
Formica Tops - Newest Colors.
Expires 9/30/09



**384 S.W. JOHNSON AVE
BURLESON**

817.295.5574
One block south of the library



— By Melissa Rawlins

Don't Worry! Be Happy!

Ah, the serenity of the rippling blue water in your own backyard swimming pool. Throw in a rock of reality and how easily that peace is shattered. Pool maintenance requires time and effort. “By servicing your pool every week, we can stay on top of what’s happening with the equipment and keep your chemicals balanced. So people don’t have to worry about it. A pool can be a lot of problems if you don’t have time to take care of it,” said Darlene McFarland, co-owner of Burleson’s BlueWater Pools.

Eighteen experienced technicians, designers and builders have served BlueWater Pools customers throughout the local area for years. The company’s founder, Scott McFarland, started in the industry 20 years ago while he was still in high school, working for a chemical retailer in the summers. After building a clientele who relied upon him to service their pools, Scott realized he needed help and asked his mom, Darlene, and dad, Dale, to handle the business end, so he could continue providing dependable service to his customers.

Most recently, Scott hired Carey Holley, whose background in pool construction has enabled BlueWater Pools to expand the new construction side of the business. “Scott and I make a good blend. He comes from the service end and sees problems

on the backside of the pool. I come from the construction side, and together we mix it up and make great projects,” Carey said.

“You know, you’re only as good as the people who work for you,” said Darlene, proudly introducing one of their long-standing employees, Eric Burgess. After seven years as a service representative with BlueWater Pools, Eric is in charge of seven technicians. “When we put a \$30 fuse in instead of a \$500 pump, my honesty keeps my customer. There’s not a repair I can’t do — plumbing, electrical, whatever,” said Eric, who is known for zipping on his dry suit in the middle of winter and diving in to make repairs to drains.

“We did the Virginia-Graeme Baker pool and spa safety act coverage on public pools this year,” Eric explained. “This started because a senator’s granddaughter was killed because she couldn’t get loose from the vortex of the vacuum in the drain.” The company expects to be busy this coming year changing out drains in residential pools.

During the fall and winter, BlueWater Pools also remodels existing swimming pools. “We do all kinds, usually plaster, tile, coping, mosaics, whatever they want to change on an existing pool,” Darlene said, adding that remodeling can take

Business NOW

several weeks. Building custom pools will take approximately 45 days. Customers are asking Carey and Scott to design salt pools more often than the chlorinated kind, as well as requesting them to surround the pool with outdoor kitchens, landscaping and all kinds of water features.

"There are all kinds of things you can do with a pool," Darlene said, "from lap pools to diving pools to something out of an island paradise.



It's a matter of finding out what our customer wants, what their budget is — you can start anywhere and just build and build on it. For any pool we build in this area, we will offer six months free service on that pool, and that's mainly so we can keep an eye on it so we can make sure they don't have any problems with it," Darlene said.

Be sure to take advantage of BlueWater Pools' end-of-summer maintenance services this month. Call (817) 297-7120 between 8:00 a.m. and 5:00 p.m. Monday-Friday. Talk to Darlene McFarland or Angela Taff, who will make appointments for their technicians to come to your home or place of business. If you are contemplating a remodel of your pool, visit www.bluewatercustompools.com for more inspiration. **NOW**



**Codi Cooper,
Licensed
Esthetician
For Your
Skin Care
Needs.**

**Open Late
Evenings
Mon 8 PM
Tues, Wed &
Thurs 9 PM**

SEPTEMBER SPA SPECIALS
ALLEVIATE SIGNS OF SKIN AGING
 Microdermabrasion/Revitalight Skin Care Package Special
Only \$100 (Save \$35)

RELAXING PEVONIA BASIC FACIAL
One Hour For Only \$40.00 (Save \$20)

ONE HOUR SWEDISH MASSAGE - \$20 OFF!
(Limited to New Guests Only)

Gift certificates now available for purchase on our website: www.coopersalonandspa.com

Cooper Salon & Spa
832 E. Renfro • Burleson, Texas • 817-447-1922

REDKEN A Professional Redken KRS Summit Salon **pevonia** BOTANICAL

AA China
SUPER BUFFET
In Burleson
Large Variety of Handmade Sushi

Sweet Deal For Senior Citizens
\$4.99 Lunch Mon-Fri
\$6.99 Dinner & Weekends

10% Off Lunch Buffet
Dine-in only. Excludes holidays. Cannot be combined with any other offer. Expires 9-30-09

10% Off Dinner Buffet
Dine-in only. Excludes holidays. Cannot be combined with any other offer. Expires 9-30-09

We Serve Mongolian Grill
 Take-out Welcome • Mongolian Grill • Hand-rolled Sushi
 Seafood • Oysters • Prime Rib • Catfish • Salad • Dessert
 Seating for Large Groups

1045 S.W. Wilshire Blvd
Burleson (beside Walmart)
817-426-8088 aachinabuffet.com

199 Food Items Daily! **MSG**

Education **NOW**

Listening *and* Learning

— By Melissa Rawlins

Have you ever tried to order ketchup in Denmark? Vicki Sorensen has. “The word is cat-sup,” explained Vicki, who lived in Denmark with her husband in the ’80s. “The words are almost identical. As I asked for catsup, the waitress kept saying, ‘What?’ She said to my husband, ‘What does she want? She’s just mumbling.’ Yet, I could understand her! He told the waitress what I wanted, and I swear he said it just like I had!” Such experiences have given Vicki empathy for the students in the English Language Institute at University of Texas at Arlington (UTA), where she is associate director. “I don’t want anybody who works in our program to treat our students with that kind of insensitivity.

“People appear childlike when they can’t express themselves,” said Vicki, who has taught and administered English as a Second Language (ESL) since 1981. The students in her intensive English programs have often accomplished a lot in their home countries, yet face difficulties getting a simple meal or giving directions or telling somebody that they are not feeling well. “I know how that feels, so I want to help them get that English as fast as I can.”

Since 1970, when her persistent follow-up calls to the Burleson Independent School District earned her a job teaching English at Burleson High School (BHS) under a wonderful mentor, Principal Nick Kerr, Vicki has learned four keys to successful teaching: First, information should be broken down into manageable pieces to prevent overwhelming students with too much at one time. Second, a piece of content should be given succinctly and the students should work with it very quickly, either in pairs, in groups or individually. Third, a lot of fun activities should be used to support the content. Fourth, the student’s success with the lesson should be ensured, since success breeds success.

After developing the German language program at BHS, Vicki and middle school teacher Beverly Self started the American Field Service Foreign Student Exchange Program at BHS. Partly for the fun of it, and partly because she believes the purpose of education is to make people’s minds pliable



and receptive, Vicki used to take her BHS German classes on field trips to Fredericksburg. Vicki’s ancestors pioneered that area of Texas, and she enjoyed showing her students that there is a whole world of thought out there.

Vicki remembers her former BHS students, many of whom maintain a friendship with her. Deborah Bode works at UTA, and has gotten Vicki in touch with several other BHS alumni. “We’ve gone to eat together at Spring Creek several times for mini-reunions,” Vicki said. She feels honored to have been invited to several official BHS reunions by men and women like Pat English, who had just retired from being one of the fire chiefs at the Arlington Fire Department; Jeff Bostic, a professor at Harvard and a child psychologist, who said Vicki was his inspiration; Debbie Baker, an artistic woman, who has been a model; Darryl Boyd, a wonderfully bright man; Shawna Martin, one of Vicki’s advanced English students; Paul Bond, who is funny and smart and works for Alcon; Cynthia Schmeltekopf, a lawyer in Dallas; and Keith Taylor, who once left a live snake on her desk.

Nearly 20 years after he pulled the prank, Vicki met Keith at the class reunion and learned he was the culprit. “He told me, ‘It was one of the most disappointing days of my life. I waited outside the door for you to scream. Nothing happened.’ Nobody told on him,” said Vicki, who is not afraid of garden snakes and simply picked up the snake and threw

Education NOW

it out the window before starting class.

Vicki is always surprised when she is invited to these reunions. "I saw myself as a very strict teacher. I was aware that it's important to be hard-lined when entering the classroom," Vicki said. When she runs into former students while out and about in Burleson, she always starts off the conversation with: "I hope I wasn't mean to you." They laugh and say she was not mean.

She left BHS to live in Denmark, and upon returning to Texas took a job in the Eagle Mountain-Saginaw school district, where she taught English to 12 Vietnamese refugees. "I felt more like I was really helping students when I taught these Vietnamese students because they just needed so much help,"



exclaimed Vicki. "They were eager to learn, because they knew they really needed this English. It felt important." This inspired Vicki to study linguistics and specialize in ESL.

"Several times my high-proficiency students have said to me, 'Are you slowing down when you're talking to me?' I said, 'I don't think so. I'm from Texas, maybe we speak more slowly here.' They say, 'Well, we can understand you when we can't understand other people.' I want to listen, not interrupt, not correct them," Vicki explained. By being herself, holding natural conversations in which she shows people that they are communicating in English, Vicki gives the greatest gift of all: just listening and understanding. **NOW**

CHOO CHOO BOUTIQUE TEXAS

New **Markdowns**

50% to 70% OFF!

Great Selection on apparel.

RENFRO SQUARE
308 E. Renfro #102 • Burleson, TX • 817-386-9700 • www.choochooboutique.com
Fashion with a Passion!

Crystal Dental

We Accept
MEDICAID, CHIP & MOST INSURANCES!

Services

Special Limited Exam & X-rays \$35.95

- Diagnostic (Exam & Diagnosis)
- Preventive (Oral disease prevention)
- Cosmetic
- Family Dental (Taking both children & adults)
- Restorative (Repairing teeth)
- Endodontics (Root canal treatment)
- Periodontics (Gum treatment)
- Orthodontics
- Oral Surgery
- TMJ

2880 N. FM 157, Ste. 102
Mansfield, TX 76063
PH: (817) 473-6200
Fax: (817) 473-6207

1301 W. Henderson St.
STE. # H
Cleburne, TX 76033
PH: (817) 558-8700
Coming Soon!

664 SW Wilshire Blvd.
Burleson, TX 76028
PH: (817) 426-3331
Fax: (817) 426-3337

www.crystaldental.org

We are an in network provider for AETNA, AMERITAS, ASSURANT, BLUE CROSS & BLUE SHIELD, CAREINGTON, CIGNA, DELTA DENTAL, DENTEMAX, EXPRESS DENTAL CARE, GENIA CONNECTION DENTAL, GUARDIAN, HUMANA, METLIFE, UNITED CONCORDIA, UNITED HEALTHCARE, ETC.

Around Town

NOW



• Grant Holybee, top left, recently passed a hunter education course. • Mariama Bah, top center in pink, tap danced at the community center. • Kayla Brooks, top right, enjoyed her summer job as a lifeguard. • Joni Parsons, bottom left, eyed one of the airplanes on display at City Hall. • Tyler Patterson, bottom right, found a big cicada during an outdoor gathering.



Endocrinology

Imran Patel, M.D.



Imran Patel, M.D., an endocrinologist, opened the Institute of Diabetes and Endocrine Disorders at Huguley. Dr. Patel has extensive training in glandular conditions including diabetes, thyroid disorders, metabolic disorders, male reproductive health, and abnormal production of hormones.

Board certified in internal medicine and board eligible in endocrinology, Dr. Patel has ten years' experience as an endocrinologist, most recently with John Peter Smith Hospital in Fort Worth. Along with patient care, Dr. Patel's career has included research and teaching. Dr. Patel worked on the landmark diabetes prevention study with world-renowned endocrinologist Dr. Abbas Kitabchi at the University of Tennessee.

Dr. Patel accepts Medicare and most insurance plans.

11803 S. Freeway, Ste. 308 **817-568-1818**



Integrated Medical Services

Wine Down

A Taste of Texas Fine
Catering & Events
Burleson, TX 76028

\$3 OFF

any purchase
Expires September 10, 2009

Our hours of operation are
Wed.-Sat. 11am-9pm
www.wine-down-bt.com

To go orders welcome,
please call 817-447-9122

Wine Down is a wine bar/bistro that serves lunch, appetizers, dessert, wine and beer. Everything we serve is cooked on-site or handmade by our baker in Ft. Worth - we also grow herbs on-site and use them in our food.

Come in and enjoy a casual lunch of sandwiches, Panini sandwiches, fresh salads, and seasonal soups, or stop by and "wine down" in the evening with our artisan cheese platters, unique wines and selected beer.



Pie Place

Café and Bakery

Now Serving Lunch and Dinner!
Mon-Thur 11-3
Fri-Sat 11-3 6-9
104 E. Ellison Burleson, TX 76028
(817) 298-2442

1\$ off any entree One per guest per visit	10% off custom pie order One per guest per visit All pie orders must be placed 24 hours in advance
--	---



Heritage —PLACE—

A Retirement Community at Huguley



CALL TODAY! 817-568-1000

- Local ownership
- Outstanding meals
- Large floorplans
- Rich, inclusive service package
- Unique, convenient location
- Membership to the Huguley Fitness Center


...and much more!



*Find us on the campus of Huguley Hospital,
15 minutes South of Fort Worth!*


300 Huguley Blvd. • Burleson, Texas • 76028 • 817-568-1000
www.heritageplaceretirement.com

Your Center for Complete Healthcare




Chronic Disease Management

- Diabetes
- Allergies
- Hypertension
- Arthritis
- High Cholesterol



Dr. Angelo Vu
 Same-day Sick Visits Available
 Mon. – Fri. 8am to 5pm
 Most Insurances Accepted

 **THE
internalmedicinecenter
OF FORT WORTH**
817.568.8700

Now Accepting New Patients

**Located in Doctor's Surgery
Center @ Huguley Hospital**



Look Who's Cooking

— By Faith Browning

IN THE KITCHEN WITH BETTY VAUGHN

Betty Vaughn gives credit where credit is due when it comes to her developmental cooking days. “My mother has always been my inspiration. She has always been an excellent cook,” Betty said. “After I married Louis and became part of a new family, I soon found out that my mother-in-law was also an excellent cook. I learned many more things from her.”

Betty enjoys spending time working on jigsaw puzzles, being very active with Field Street Baptist Church and loving her family. “When they can all be here at our house, it is the best time in the world,” she said. “Of course, when they are all here, we are always hungry. They are my best critics, and I appreciate them for that. They all have different favorites, so I try to change up the menus to please them all.” **NOW**

To view more of your neighbors' recipes, visit our archives at www.nowmagazines.com.

GOULASH

1-2 lbs. extra-lean hamburger meat
1 tsp. cooking oil (bacon drippings are best)
1/2 cup sugar
1 tsp. garlic, minced
2 tsp. onion, minced
salt and pepper, to taste
2 1/2 cups uncooked macaroni
2 small cans tomato sauce
1 can Ro-Tel tomatoes
2 cups grated cheddar cheese

Brown the hamburger meat in the oil, adding the sugar, garlic, onion, salt and pepper after hamburger meat is half cooked. Cook the macaroni in boiling water until tender; drain and set aside. After hamburger meat is brown, add tomato sauce and Ro-Tel tomatoes. Add a small amount of water if needed to cook thoroughly. Add macaroni; cook until all ingredients are well coated with the tomato gravy. Stir occasionally, add additional water if needed. Put into a casserole dish; cover with grated cheese. Cover and allow the cheese to melt. Serves 6-8.

Ingredients can be adjusted to accommodate larger groups.

CHICKEN-FRIED STEAK

2 lbs. round steak, cut 1/2-inch thick
salt, to taste
2 large eggs
1 large can evaporated milk
2 cups all-purpose flour
oil (olive oil is best)

Cut steak into desired serving sizes; salt each piece. Beat eggs in a medium-sized bowl. Add milk; beat together. Put flour in a large bowl. Using an electric skillet (this is needed to keep the heat at a steady temperature), set the temperature at 300 F. Put about 1 inch oil in the skillet and let it heat. Once oil has reached temperature, dip a serving of steak in flour. Next, dip in milk mixture, again in flour (this can be done as many times as desired; just be sure to begin and end with the flour); place steak in skillet. Fill skillet without allowing steak pieces

to touch. Fry to a golden brown, gently turn steak over to brown the other side. After steak is fried, drain on a paper towel. Be sure not to overcook. Usually by the time steak is brown on both sides it is completely cooked and ready to eat. Boneless “butterfly” pork chops or chicken can be fried the same way.

CAULIFLOWER SALAD

1 head cauliflower
1 head lettuce
2 green onions, chopped
1 pint mayonnaise
grated Parmesan cheese, to taste
4 strips bacon, cooked crispy and crumbled

Cut or tear cauliflower into small florets in bottom of large serving bowl. Tear lettuce in small pieces; place over cauliflower. Place chopped onions on top of lettuce. Gently spread mayonnaise over all, making a “seal” to cover the first 3 ingredients. Sprinkle Parmesan cheese over mayonnaise; sprinkle bacon crumbles over



Front row: Jackie Ausich, Ayla Ricci, Tuesdee Lynch, Sandra Crites
Back row: Michelle Young, Brandee Hand, Leah Owens, Kim Snoddy,
Karen Olinger, Kelly McCulloch, Michelle Peters, Jamie Keating

*Escape ... from a world of hustle and bustle
and enter the calm and peaceful world of
Preferred Image.*

**PREFERRED
IMAGE
SALON DAY SPA**

Featuring

*Hair styles & colors, face lift facials, manicure & pedicures
and a relaxing or therapeutic massage.*

*Spa Packages & Gift Cards
Available*

327 N.W. Renfro Street • Next to Mrs. Baird's Outlet
Burleson • 817.447.1247 • www.preferredimagesalondayspa.com

Who's Cooking **NOW**

the cheese. Before serving, stir; mixing all ingredients together. This can be made the day before and stored in the refrigerator until time to serve.

OLD-FASHIONED CORN BREAD

1 1/2 cups cornmeal
2 cups flour
1/2 cup sugar
2 Tbsp. baking powder
2 Tbsp. salt
2 large eggs
1/2 cup milk
4 Tbsp. grease (bacon drippings are best)

Measure ingredients in order listed, except grease. Mix thoroughly. Pour into a hot iron skillet with grease. Bake in hot 400 F oven for 40 minutes or until golden brown.

STRAWBERRY PUDDING DELIGHT

2 quarts fresh strawberries
1 pkg. strawberry glaze
1 yellow or white cake mix baked as directed on box in two layers
1 large package Jell-O vanilla instant pudding, mixed as directed on box
1 large tub Cool Whip, thawed

Wash and slice strawberries (set aside a few strawberries for garnish). Mix glaze and strawberries together; set aside. Use a large decorative clear-glass bowl. Cut each cake layer to make 4 layers. Begin layering with cake, then pudding, then strawberries and ending with Cool Whip layer in bowl. Make several layers in this order. Garnish with a few strawberries on top. Looks pretty and tastes good, too.

COOL WHIP PIE

1 large tub Cool Whip
1 can sweetened condensed milk
1 can frozen margarita drink mix
1 large graham cracker crust

Using an electric mixer, mix together Cool Whip and sweetened condensed milk. Add drink mix; mix well. Pour into crust, cover and chill at least 3 hours before serving. You can use just about any drink mix flavor.

SUMMERTIME FRUIT

cantaloupe, to taste
strawberries, to taste
seedless grapes, to taste
1/2 cup sugar

Put cleaned and cut fruit into a 2-quart container. Add sugar. Let stand at room temperature until sugar melts, stirring several times. Chill and serve. 6-8 servings.



Children are Blooming at

Mountain Valley Child Development Center

At Mountain Valley Child Development Center, we understand that the first five years of childhood are the most important in development and learning. Every parent wants to nurture their child's God-given talents and abilities. With this in mind, we offer a gifted and talented curriculum that promotes hands-on learning. Our Bible-based approach to education will instill character, as well as intellect. Our incredible educators are dedicated to service and have a calling for teaching. You will be amazed at the difference. Call today for more information about Mountain Valley Child Development Center.

- We offer infant, toddler, pre-school, kindergarten preparatory, mother's day out, & after school programs. We provide flexibility to meet the needs of most schedules & budgets.
- Beautiful state-of-the-art facility conveniently located on Wilshire Blvd.
- Live streaming video to view your child while you are at work.
- Spanish and baby sign is taught in the daily curriculum.
- Music education program. Also, a monthly visit from Mr. Music!
- Morning chapel with praise and worship.
- All teachers are trained by a master-level teacher.
- "Reading Mastery" - early literacy program.



*"Nurturing Young Hearts and Minds.
All for the Glory of God"*

2975 SW Wilshire Blvd. • Burleson, TX 76028
(817) 484-2444
www.mountainvalleychilddevelopmentcenter.com

Finance **NOW**

Life Insurance Should be Part of Your Financial Plan

— By Sharon Robinson

You may think you have a solid financial plan. The paycheck you bring home on a regular basis may be more than adequate to meet the immediate needs of your family. There may even be some left over for vacation, retirement or even college savings.

But what if you weren't there to provide for your family's needs? Would they continue to live in the home you shared? Would your children be able to attend the college of their choice?

These are important questions that

must be considered. Finding the answers can start with visiting your insurance agent and discussing a life insurance policy that is appropriate for you and your family.

September has been declared Life Insurance Awareness Month, a time for you to take a look at your existing coverage to see if it is adequate. If you don't have coverage, it is a good time to discuss the purchase of a policy.

A primary purpose of a life insurance policy is to provide a dollar amount to

the beneficiaries in the event of the death of the insured person. That death benefit can be used in any number of ways, whether for a mortgage, college education or regular income.

Life is full of many questions. Being sure that your financial plan includes an adequate amount of life insurance can help you answer at least one question, "What will happen to my family if I'm not around to provide for them?" **NOW**

Sharon Robinson is a State Farm agent based in Burleson.



Sharon Robinson, Agent

124 NW Newton
Burleson, TX
www.sharonrobinson.us
817.295.2000

"Family is everything, call us about life insurance!" - Sharon

AUTO QUOTES 24 / 7



State Farm.



MDESIGNS
Automotive Sound & Performance

201 N. Scott St. • Burleson, Tx 76028 • 817-447-9877

Custom Audio and Video
Fiberglass Enclosures
Tint and Alarms
Custom Interior
DVD and Video Installation

Performance and Custom Exterior
Hoods, Body Kits and Lighting
Custom Suspension
Engine Work, Turbo and Super Charger
Wheels and Tires
Exhaust
Diesel Performance
Nitrous

All Automotive Repairs
Soda Blasting
Gasoline and Diesel
Eighteen wheelers
24hr Service



Couch & Russell

A Tradition of Wealth Preservation

couchandrussell.com

388 SW Johnson Ave, Burleson, TX, 76028

Has the bear taken a bite out of
your IRA or 401k?
Are you afraid to open your statement?



Call us today to hear about alternative
strategies that we feel could help
rescue your IRA/401k!

817-295-2236

Call Craig or Rex today!

Registered Representatives of and securities offered through Questar Capital Corporation (QCC), Member FINRA/SIPC. Advisory Services offered through Questar Capital Asset Management (QAM), A Registered Investment Advisor. Couch & Russell is independent of QCC and QAM. Not FDIC Insured - No Bank Guarantee - May Lose Value.

WITH SO MANY CHOICES, WHY WOULD YOU CHOOSE TO PAY TAXES?

Tax-Free Municipal Bonds

2.01% to 4.88%*

*Yield effective 08/18/2009, subject to availability. Yield and market value may fluctuate if sold prior to maturity and the amount you receive from the sale of these securities may be less than, equal to, or more than the amount originally invested. Bond values may decline in a rising interest rate environment. Any bond called prior to maturity results in reinvestment risk for the owner of the bond. May be subject to alternative minimum tax. Municipal bonds may have original issue discount.

Some of the available issues of bonds are callable. Contact your local Edward Jones financial advisor for more information about maturity dates and applicable call provisions.

Call or stop by today.



Lynn H Bates Jr
Financial Advisor

115 N W Newton Drive Suite E
Burleson, TX 76028
817-447-9446

www.edwardjones.com Member SIPC

Edward Jones®

MAKING SENSE OF INVESTING

Health NOW

KIDNEY FUNCTION

— By Betty Tryon, R.N.

Shaped like a kidney bean about the size of your fist, the kidneys have an impressive array of functions. Even though you have two of them, you can live a perfectly normal life with just one. Functioning like a sieve, the kidneys filter hundreds of gallons of blood every day, cleaning and purifying it for your health. If you did not have kidneys or your kidneys were beginning to fail, the waste, which is normally filtered and excreted from your bladder would build up in your body and become toxic to your health. Without functioning kidneys, waste must be removed by dialysis or kidney transplant.

The waste build-up in the blood comes from normal metabolic functions, such as the breakdown of muscular tissue and ingested food products. Everyone knows when you drink too much water it means more trips to the bathroom. If you are not drinking enough fluids, your urinary output is restricted. The kidneys work to keep the proper balance of fluid level in the body.

Also, kidneys play a large role in making sure your blood pressure level remains normal by the secretion of an enzyme named renin. If your blood pressure drops, then the kidneys

do not receive enough blood. This triggers the release of renin, which causes the blood vessels to contract and thereby increasing the blood pressure. Another function of your kidneys is the production of erythropoietin, a hormone, which signals the bone marrow to produce more red blood cells.

Those are a few of the critical functions performed by this organ, but many other important operations take place in the kidneys. That is one of the reasons your health care provider requests a urine sample for testing. A few areas checked are the BUN (blood urea nitrogen) and creatinine levels. These levels determine how well the kidneys can filter waste from the blood. Another area tested may be electrolytes. Electrolytes are salts found in the cells of the body. They are potassium, calcium, magnesium, chloride, bicarbonate and phosphate. When these salts are imbalanced, your kidneys work to correct it. If you ingest too much potassium, your kidneys will filter out a large amount, too little and the kidneys excrete only a small amount of potassium.

These are only a few of the jobs assigned to this organ. Help your kidneys out by drinking the proper amount of water every day. The proper amount depends on your lifestyle, where you live and even the current state of your health. However, it is imperative that you drink water every day. This is not just a saying; it is the truth. **NOW**

This article is for general information only and does not constitute medical advice. Consult with your physician for questions regarding this topic.

Internal Medicine & Pediatrics

Lawrence Whaley, M.D.

Lawrence Alan Whaley, M.D., has opened a new medical clinic in Burleson to provide comprehensive primary care for families. Internal Medicine & Pediatrics of Burleson is located in the newly renovated medical office at 220 S.W. Wilshire Blvd.

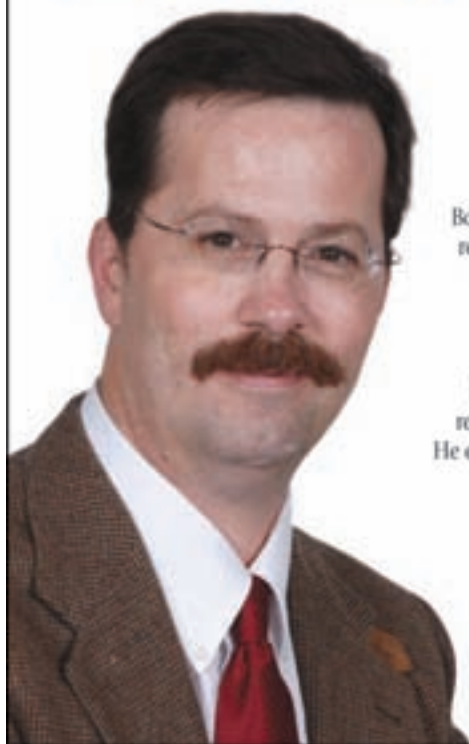
Board certified in internal medicine and pediatrics, Dr. Whaley has completed a combined four-year residency in internal (adult) medicine and pediatrics to care for newborn through geriatric patients. In addition to treating acute illnesses and providing preventative care, he has a special interest in treating asthma, allergies and chronic illnesses.

An experienced physician, Dr. Whaley has practiced in clinics and emergency care settings for fifteen years in Dallas, Stephenville, Waco and Johnson City, Tennessee. Dr. Whaley completed his residency in internal medicine and pediatrics at Western Reserve Care System in Youngstown, Ohio. He earned his medical degree at the University of Texas Health Science Center in Houston. He holds a Bachelor of Science degree in chemistry from Midwestern State University in Wichita Falls.

Internal Medicine & Pediatrics of Burleson welcomes new patients and most insurance plans, including Medicare.



220 S.W. Wilshire Blvd.
817-426-3800



Family Medicine

Precious J. Marquart, M.D.



Precious J. Marquart, M.D., has joined Huguley Medical Associates and will practice at Alsbury Family Medicine Clinic in Burleson with Dr. Nelda Canniff. As a board-certified family physician, Dr. Marquart will provide comprehensive care for families and individuals of all ages, including treating acute illness, managing chronic conditions and providing wellness care.

Dr. Marquart has served as an Assistant Professor of Family and Community Medicine with Penn State Milton S. Ebersole Medical Center in Pennsylvania. She has also worked in private practice.

She is a member of the American Academy of Family Physicians, the American Medical Association and the Texas Medical Society.

780 N.E. Alsbury Blvd, Ste. B
817-447-8080



Ride With Us



Bring this coupon in for a
10% discount
on all parts
& accessories
Exp. 9/30/09



BICYCLES & SERVICE

140 NW John Jones Dr
Suite 124

Burleson, TX 76028

817-447-3505

817-447-3730 Fax

spokes-bicycles.com

Tues. - Fri.

10:00AM to 7:00PM

Sat. 10:00AM to 6:00PM

Teresa Anderson
is relocating
September 1, 2009.

**Thank you for all
your support at
Market Centre Salon
Day Spa 1987-2009
where I was owner
for 21 years.**

**Looking forward to
seeing you at my
new location.**

New location will be:

**PREFERRED
MAGIE 327 NW Renfro St
SALON | DAY SPA Burleson**

Cell: 817-913-9713

Salon: 817-447-1247 Ext.113

www.preferredimagesalondayspa.com

CASH4TITLE LOANS

No Credit Check

Money in Minutes

Flexible Term loans up to 12 months

With this Ad receive special discount

Lowest Rates In Town

- Se Habla Español -

Loans from \$300 up to \$5,000

How much can I borrow?

A loan can be up to a third of the
wholesale value of the car.

How will I pay my loan?

All loans have an easy payment
program based on your pay schedule:
Weekly, bi-weekly or monthly!

817-426-3055

888.918.0555

108 NW Renfro
Burleson, TX 76028

September 2009

Community Calendar

Second Monday

Wellness Networking Group: 7:30-9:00 a.m., JJ Mocha's in Old Town. This meeting is for people whose businesses benefit the health and wellness of the community and who are willing to give of themselves to each person in the group. Come prepared to describe your business goals and what you consider a great referral! Contact ann.peek@sbcglobal.net.

Fourth Thursdays

American Business Women's Burleson Charter Chapter is always looking for new faces to join, and meets at a local restaurant; 6:30 p.m. for networking, then meeting and meal start at 7:00 p.m. RSVP to Linda Houst, at (817) 295-7060 or ljh67@sbcglobal.net, or Sue McKnight at (817) 295-3220.

Every Saturday

Farmers' Market: 8:00 a.m.-2:00 p.m. Located in the parking lot next to City Market in Old Town.

September 7

Labor Day.

September 8

Burleson City Council meeting: 7:00 p.m., City Hall. (817) 447-5400.

Burleson Heritage Foundation meeting: 7:00-8:30 p.m., Heritage Visitors Center, 124 W. Ellison. (817) 447-1575.

September 12

Joshua City Wide Garage Sale: 8:00 a.m.-5:00 p.m., starting at the north end of Main St. in Joshua and heading south. Breakfast, lunch and dinner will be served at local restaurants. Contact Carol Turpen at (817) 447-3438 or gardengateclub@sbcglobal.net.

International Angel Day: Market Emporium and Gifts (above)

Babe's). Audience Angel messages: 1:00-4:00 p.m. Private Angel reading: 6:00-9:00 p.m. To register, call Carol Lee at (817) 447-0077.

Taste of Burleson: 5:00-8:00 p.m., Re/Max parking lot in Old Town. Advance tickets \$15. For more information, contact (817) 295-6121 or marys@burleson.org.

September 17

Burleson Area Chamber of Commerce quarterly luncheon: 11:30 a.m.-1:00 p.m., SPJST Lodge (new location). (817) 295-6121. marys@burleson.org.

22nd Annual Golf Benefit, sponsored by Community Bank in support of Meals on Wheels: Hidden Creek Golf Course. Registration for the benefit is open and morning and afternoon tee times are still available. Contact Amy Jackson at (817) 558-2840 or amy@mowjec.org.

September 18-20

Antique Alley: 8:00 a.m.-dark. This family friendly event spans the historic communities of Maypearl, Grandview and Cleburne via FM 66 to FM 916 to FM 4. For more information or to rent booth space, contact Cindy Shaffer at (972) 921-7269 or LovethatWatkins@aol.com.

September 19

Annual Trash Bash: 9:00-11:00 a.m. To register, contact (817) 426-9842 or bchafin@burlesontx.com by Thursday, September 17.

September 21

Burleson City Council meeting: 7:00 p.m., City Hall. (817) 447-5400.

September 22

Town Hall meeting: 6:30 p.m., Burleson High School cafeteria.

Give your opinion about the future growth and development of Burleson.

September 27

16th annual Crystal Heart Gala. Reception: 5:30 p.m. Dinner: 6:30 p.m. Black-tie fundraiser to support Huguley Memorial Medical Center's community outreach including their mobile health services bus. Entertainment by 1964 - The Tribute (a Beatles group). (817) 568-3281.

September 28

Burleson ISD Board meeting: 6:30 p.m. (817) 245-1000.

Burleson Tree Service

Trim	Root Aeration
Removal	Insect Control
Stump Grinding	Cabling
Brush Clearing	New Trees
Fertilization	

FREE ESTIMATES

Monty Cain

817-447-4617 Office
817-295-8942 Fax

NOW OPEN

Comprehensive Exams

Excellent Selection of High Quality Frames & Lenses

Over 15 Years Medical Eye Care Experience

Pre & Post Op Care

Cameron Seidel, OD

Optometric Glaucoma Specialist

(817) 916-4140

1314 NW John Jones Dr., Burleson TX 76028

Call Today for an Appointment or Come by and See Our Large Selection of Designer Frames and Sunglasses!

www.seideleyecare.com

Market Centre

Salon & Day Spa

The Area's Premier Salon and Day Spa for Twenty-One Years

Free Haircut and Style
With Any Color Service

Call and book your appointment with Natalie or Wendy to receive this special offer.

Offer valid through September 30, 2009
Not to be combined with any other offer.

110 South Main Street
in Historic Downtown Burleson


(817) 447-0098

mcmc
mike carlson motor co.

BANKS AND CREDIT UNIONS SAY, "NO."
OTHER CAR DEALERSHIPS SAY, "NO."
**MIKE CARLSON MOTOR
COMPANY SAYS, "YES!"**

**WE HAVE MILLIONS OF DOLLARS FOR
IN-HOUSE FINANCING AVAILABLE TO LOAN!**



**OVER 250 LOW-MILEAGE 2007 & 2008  CERTIFIED VEHICLES.
EVERY UNIT COMES WITH A LIMITED POWERTRAIN WARRANTY.**

**DON'T SETTLE FOR AN OLD VEHICLE FROM A TOTE-THE-NOTE DEALER.
GET A CERTIFIED, NEWER MODEL VEHICLE WITH A WARRANTY!**

**We proudly report to the credit bureaus each month
to help you establish or re-establish your credit!**

EQUIFAX


TransUnion.

TWO BURLESON LOCATIONS TO SERVE YOU!

240 Exchange Street • Burleson
Behind Braum's

800 SW Wilshire • Burleson
Next to 1st National Bank



Ask your Doctor to send you to
One Source so you can receive an
AFFORDABLE
 CT, MRI, X-Ray or Ultra-sound!


One Source can help
 save you money on all
 your diagnostic scans.

Go GREEN and save money by choosing **One Source**

- ✓ No long waits
- ✓ No Multiple bills, unlike the hospital
- ✓ Locally owned and operated since 2003
- ✓ Payment plans available
- ✓ Most Insurance accepted
- ✓ 16 Slice CT
- ✓ 1.5 MRI
- ✓ On site radiologist



817-447-3443
www.onesourcediagnosticimaging.com



Vicki's Books

Want to save on overhead costs?

Let me handle your books and administrative needs from my office.

Call Vicki at 817-805-1040.
References available.

Gastroenterology

Adil M. Choudhary, M.D.

Award-winning gastroenterologist Adil M. Choudhary, M.D., has opened a practice at Huguley Memorial Medical Center. Board certified in both internal medicine and gastroenterology, Dr. Choudhary treats inpatients and outpatients for conditions of the liver and digestive tract.

Dr. Choudhary has extensive training in gastroenterological and biliary endoscopic procedures. He is one of only 277 Fellows of the American Society of Gastrointestinal Endoscopy. The American College of Gastroenterology and the American Medical Association, among other organizations, have honored Dr. Choudhary with many awards and recognitions.

Dr. Choudhary completed his residency in internal medicine at Bellevue Hospital Center and New York University Medical Center in Manhattan. He did a three-year fellowship in gastroenterology and hepatology at Yale University Gastroenterology Program in Bridgeport, Connecticut, and he received advanced training in therapeutic gastrointestinal endoscopy at Tulane University Medical Center in New Orleans.

11803 S. Freeway, Ste. 110 **817-551-7332**

